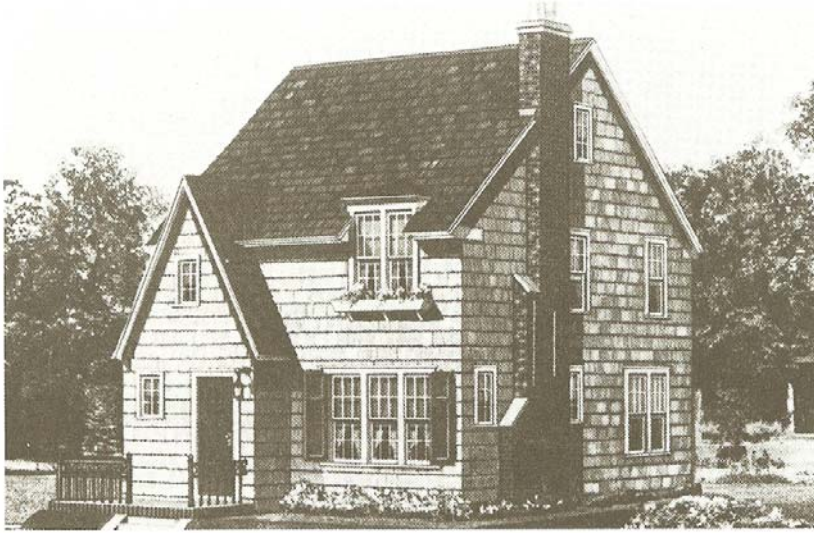


# THE BARRINGTON



The Barrington retains the dignity of an old English home and has the practical interior of modern American architecture. Whether you consider economy, beauty or convenience as of first importance, the Barrington assuredly meets these and every point of merit with satisfaction. Exterior features at once stamp the mark of quality. The well-balanced projection at the front forms the entrance; leading to it is a tapestry brick terrace, guarded by a decorative iron railing. Sided with wide shingles and exposed fireplace chimney.

Details and features: Six rooms and one bath. Glazed front door off open terrace with iron railing. Fireplace flanked by high casement windows in living room; breakfast nook off kitchen.

Years and catalog numbers: 1926 (P3241); 1928 (C3260); 1929 (P3260)

Price: \$2,329 to \$2,606

Similar to: The Cambridge

Differences: Brick exterior; half-timbered and stucco gables; batten door with wrought iron hinges; diamond-paned casement windows

Year and catalog number: 1931 (3289)

Price: No price given



The Cambridge



Gabled roof, one and a half stories, projecting gabled side entrance



## THE DOVER



The Dover is an Americanized English-type colonial story-and-a-half cottage with a convenient floor plan. The massive chimney helps to "tie in" the front gable, and the cowled roof lines help to give a compact appearance. The exterior walls are planned for clear beveled siding but will look equally attractive if shingles are used.

Details and features: Six rooms and one and a half baths. Freestanding chimney; vestibule with sloping gabled roof; arched front door. Fireplace in living room; arched opening between living and dining rooms.

Years and catalog numbers: 1928 (P3262); 1929 (P3262); 1932 (3262); 1933 (3262); 1934 (3262); 1935 (3262); 1937 (3262); 1939 (3262)

Price: \$1,613 to \$2,311

Similar to: The Mansfield

Difference: Brick exterior

Years and catalog numbers: 1932 (3296); 1933 (3296)

Price: \$2,292



*The Mansfield*

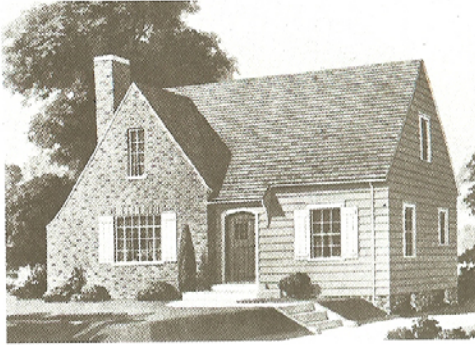


---

## THE GAINSBORO

---

Much can be said about both the exterior and interior of this attractive home. The construction of common brick painted white and siding exterior walls is inviting and ties in with the English lines. The plan lends itself to the "house that grows" idea, as you have complete living on the first floor, consisting of living room, dining room, bedroom, kitchen and bath. Most families need a first-floor bedroom or find it will come in handy as a library or den. The second floor, which contains two large bedrooms (one with three exposures) and four closets, can be finished as a part of your original building program or at some future date.



.....  
Details and features: Six rooms and one bath. Front gable faced with brick; segmental-arched front door with strap hinges; batten shutters. Fireplace in living room.

Years and catalog numbers: 1933 (3387); 1934 (3387); 1935 (3387); 1937 (3387)

Price: \$1,475 to \$1,548

---

## THE GATESHEAD

---

The Gateshead is an Americanized English type, particularly adaptable to narrow city lots. The exterior is of clear beveled siding with half-timber and stucco on the front gable. The main roof sweeps gracefully over the front vestibule, and the front gabled roof is treated in the same way. If your requirements can be filled with a compact five-room plan, it will be hard to improve on the arrangement shown by the floor plans.



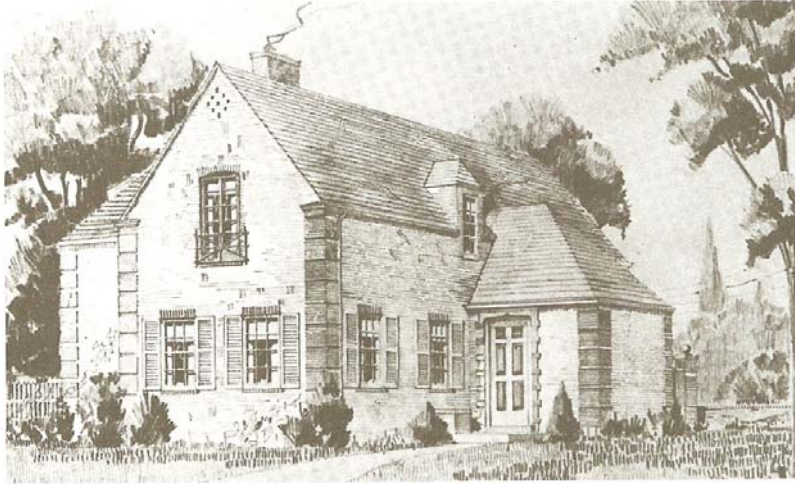
.....  
Details and features: Five rooms and one bath. Side porch; steeply pitched roof; half-timbered and stucco front gable; segmental-arched front door. Corner fireplace in living room.

Years and catalog numbers: 1933 (3386); 1934 (3386); 1935 (3386)

Price: \$1,345 to \$1,392



# THE MILLERTON

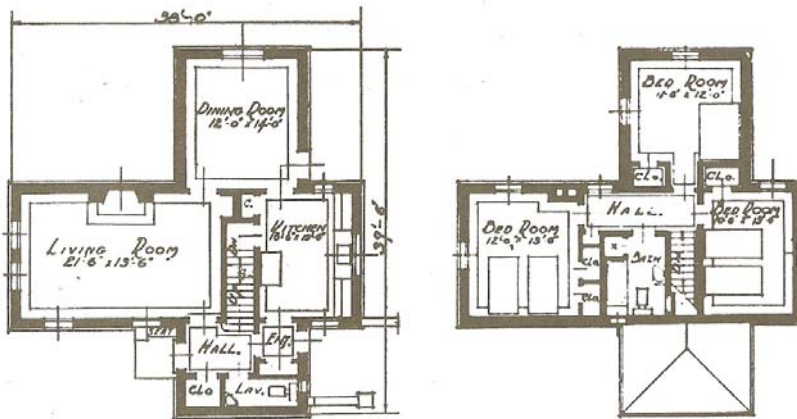


This new type of American design home is meeting with considerable popularity on account of the compact, efficient room arrangement but gives a very serviceable arrangement at a minimum cost. The exterior is planned to be covered with brick, which we suggest finishing with whitewash, leaving the quoins at the corners with a red colored brick exposed.

Details and features: Six rooms and one and a half baths. Brick exterior; one-story entrance; corner quoins; hipped dormer. Fireplace in living room.

Years and catalog numbers: 1931 (3358); 1932 (3358); 1933 (3358)

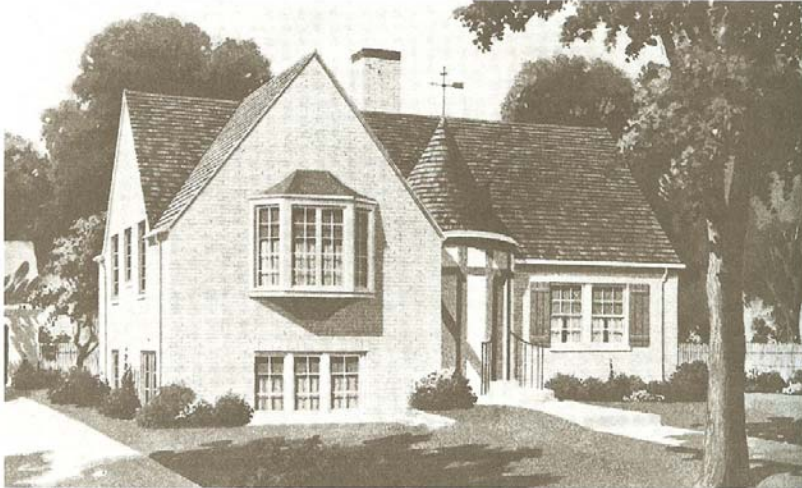
Price: No price given



---

## THE NORMANDY

---

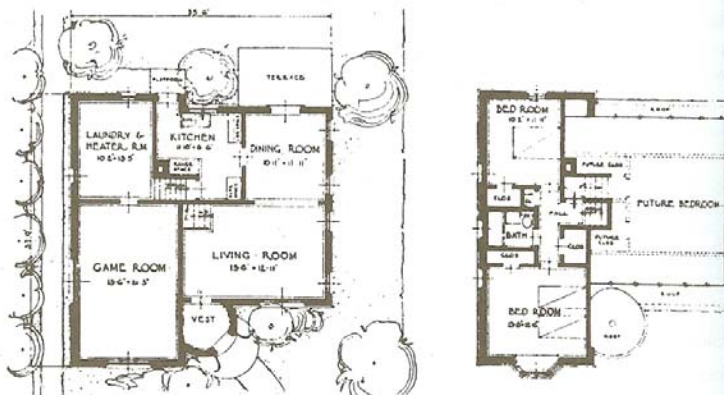


This attractive French- or Normandy-type house is another good example of a flexible plan, giving the maximum livable area at the lowest cost consistent with good construction. Distinguished by a beautifully designed turret, capped with antique weathervane and supported by a half-timber and stucco pediment, forming an interesting circular-shaped vestibule. The exterior walls, as shown in the photograph, are planned for brick (not included in base price). We recommend using common brick painted white for best appearance. Stained shingles or wood siding can be used with equally pleasing results and at considerable saving in cost.

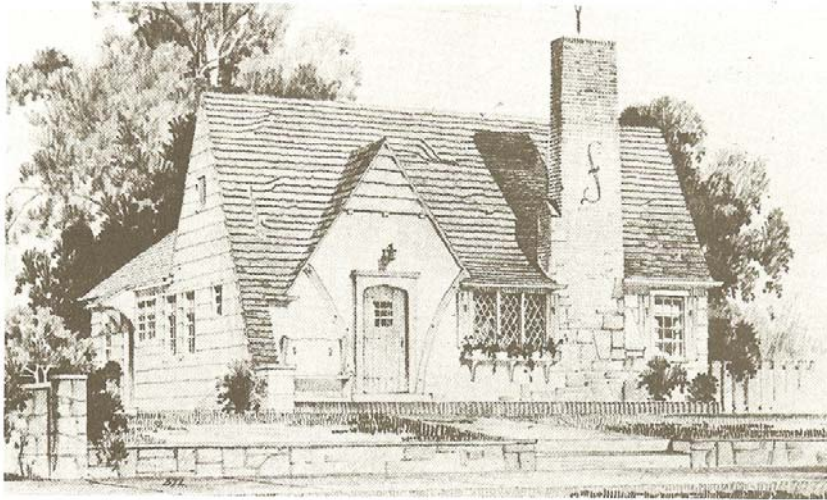
Details and features: Five, six or seven rooms and one bath. Conical turret above entrance; bay window on front. Split-level plan; French doors in dining room opening onto terrace.

Years and catalog numbers: 1933 (3390); 1934 (3390); 1935 (3390)

Price: \$1,598 to \$1,867



## THE STRATHMORE

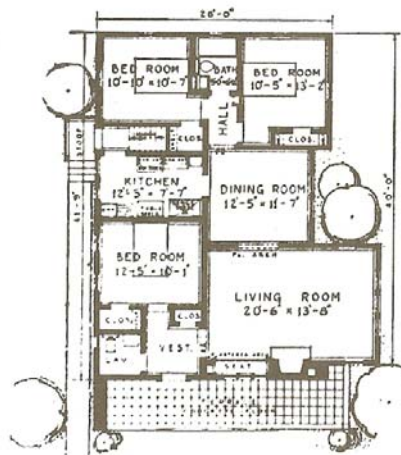


The lure of Old World charm and the luxury of New World comfort are incorporated in this beautiful six-room bungalow. Equal to the skill with which stucco, stone, brick and wide shingles are used in the English exterior are the elegance and completeness of the interior appointments. Colors which will emphasize the protecting sweep of the roof as it shelters the entrance and enhance the contrast which makes the exterior effective would be as follows: buff stucco, cream stone, dark red and brown brick and gray wood shingles.

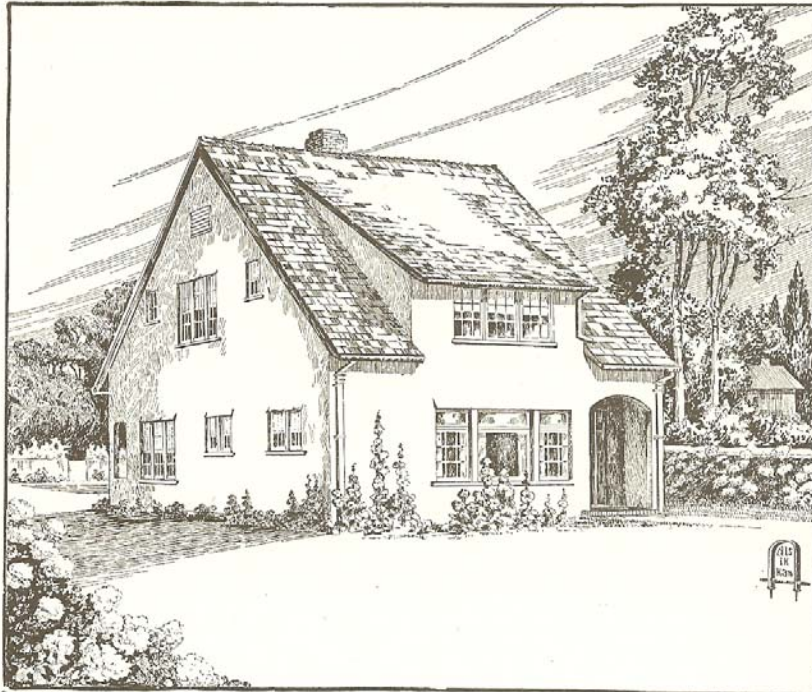
Details and features: Six rooms and one and a half baths. Stucco and shingled front wall; front terrace; pointed arched front door with strap hinges. Fireplace flanked by built-in window seat and cove ceiling in living room; arched opening between living and dining rooms.

Years and catalog numbers: 1932 (3306);  
1933 (3306); 1934 (3306); 1935 (3306); 1937  
(3306)

Price: \$1,627 to \$1,757



## CEMENT COTTAGE FOR A NARROW TOWN LOT



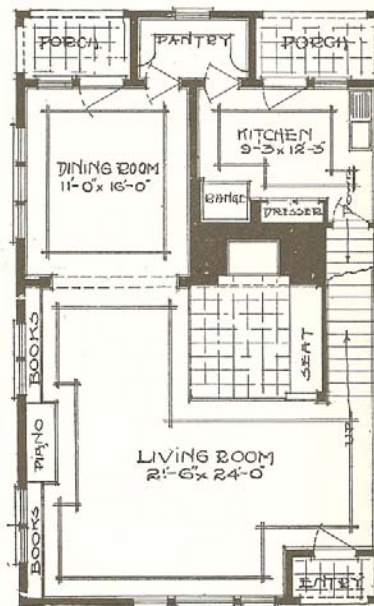
Published in *The Craftsman*, June, 1911.

CRAFTSMAN CEMENT COTTAGE NO. 118.

**T**HIS cement cottage is planned for a narrow lot and is only a story and a half high. It has a long roof line broken with flat dormers front and rear. The groups of windows are most interesting, all being casement except the large plate glass picture window of the front group, which is stationary. No front veranda has been provided; but the entry is recessed and the graceful arch emphasizes the cement construction. Hollyhocks would be especially charming against the plain walls.

On entering, you find the hall space has been included in the living room, with an open stair conveniently located near the entrance. A partition dividing dining and living room is only suggested—an arrangement which permits of a vista from living room through dining room and across the rear porch. Open bookshelves break up the long wall of the living room and a space has been left for the piano, which will give it an appearance of being built in.

The Craftsman fireplace-furnace is large and generous, and with the inviting seat nearby becomes at once the center of interest. The



HOUSE NO. 118; FIRST FLOOR PLAN.