

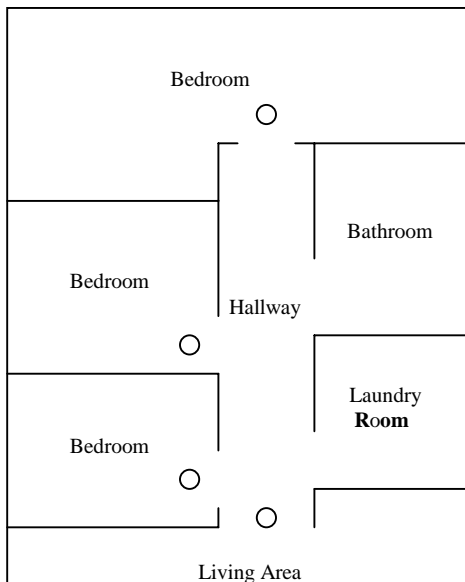


Smoke Detector Locations

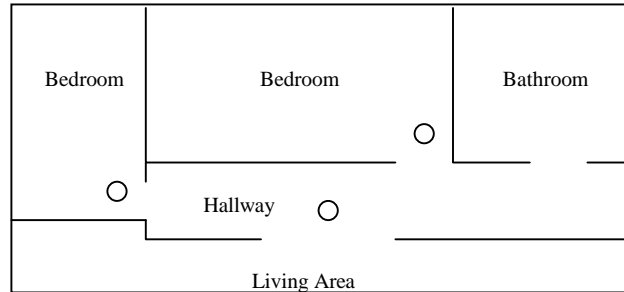
Note: **Smoke Detectors must be labeled by UL Laboratories and the State Fire Marshall.** Existing permanently wired smoke detectors must be replaced in kind. They are not permitted to be replaced with battery powered units.

The installation locations spotted on the typical floor plans are only a general guide. Cathedral ceilings and the location of existing fixtures, hallway doors, etc...can effect the proper location of smoke detectors. Contact the Building Department at (530)757-5610 for any questions you may have for special circumstances.

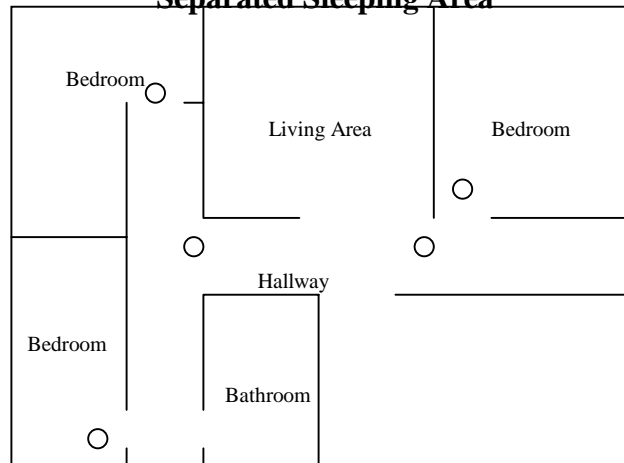
Corridor Hallway



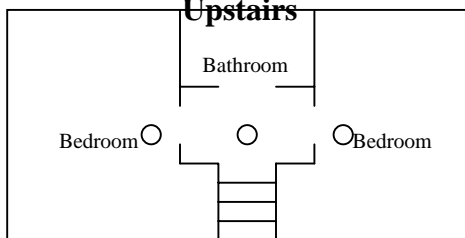
Split Hallway



Separated Sleeping Area



Upstairs



Stairs

Legend

○ Smoke Detector

Any Questions? Call the Building Department at (530)757-5610 and ask

P:\Pb\FORMS\Revised handouts 2001\Smoke_Detector_Locations.doc