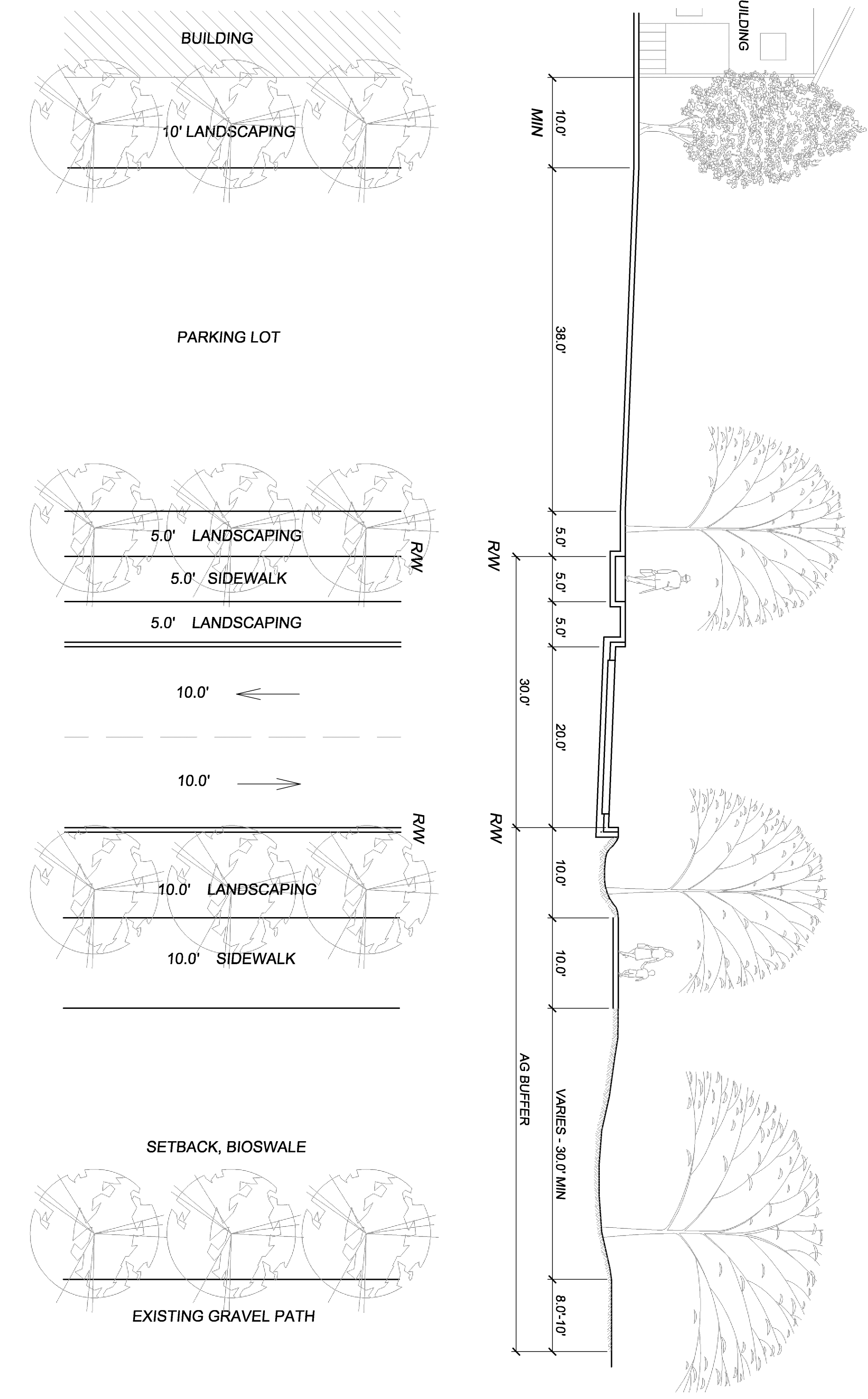
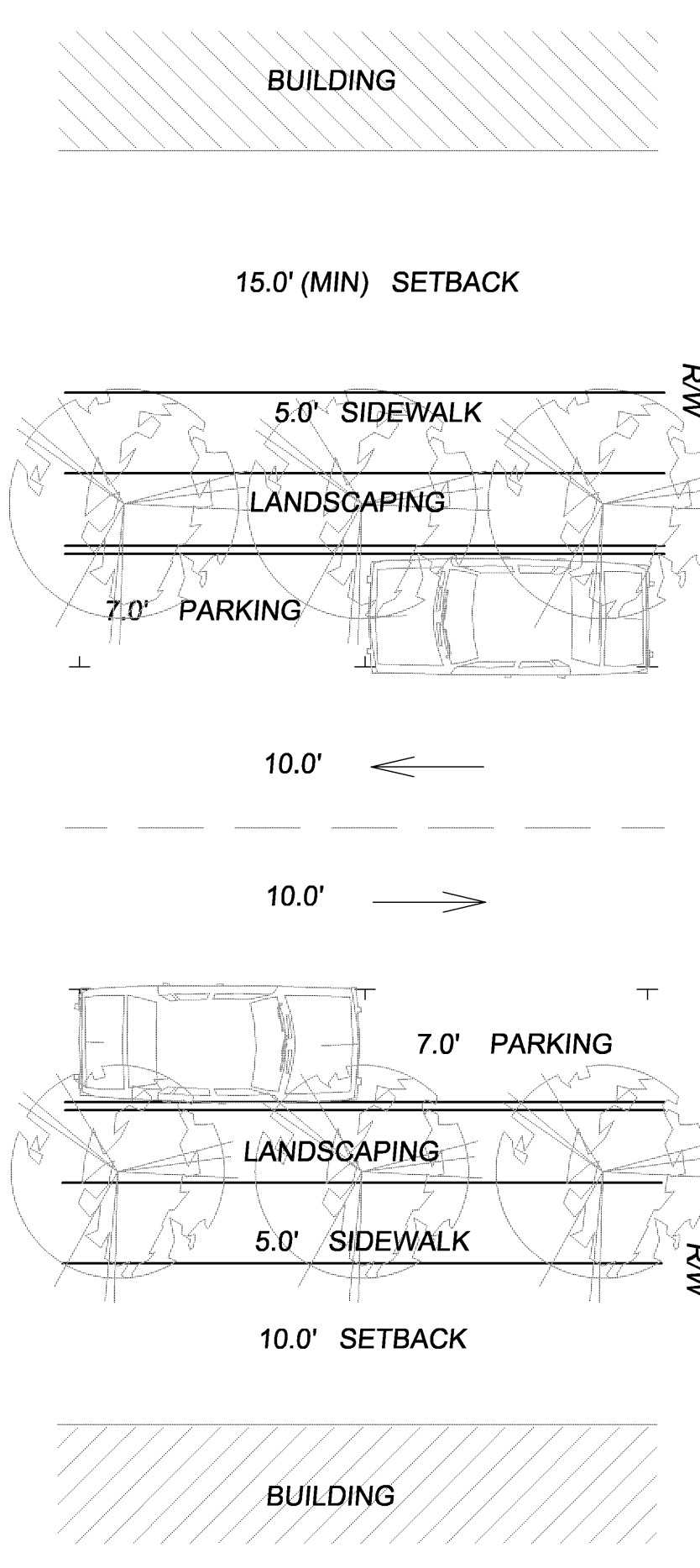
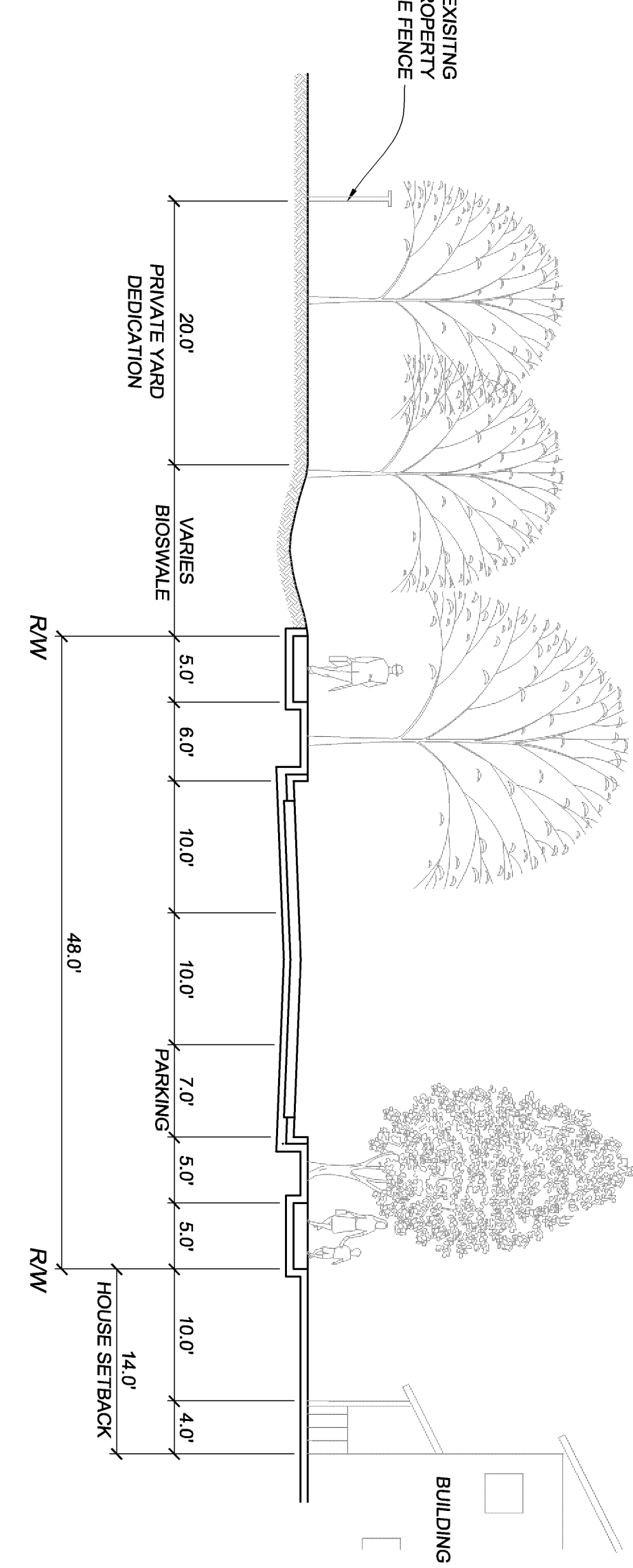
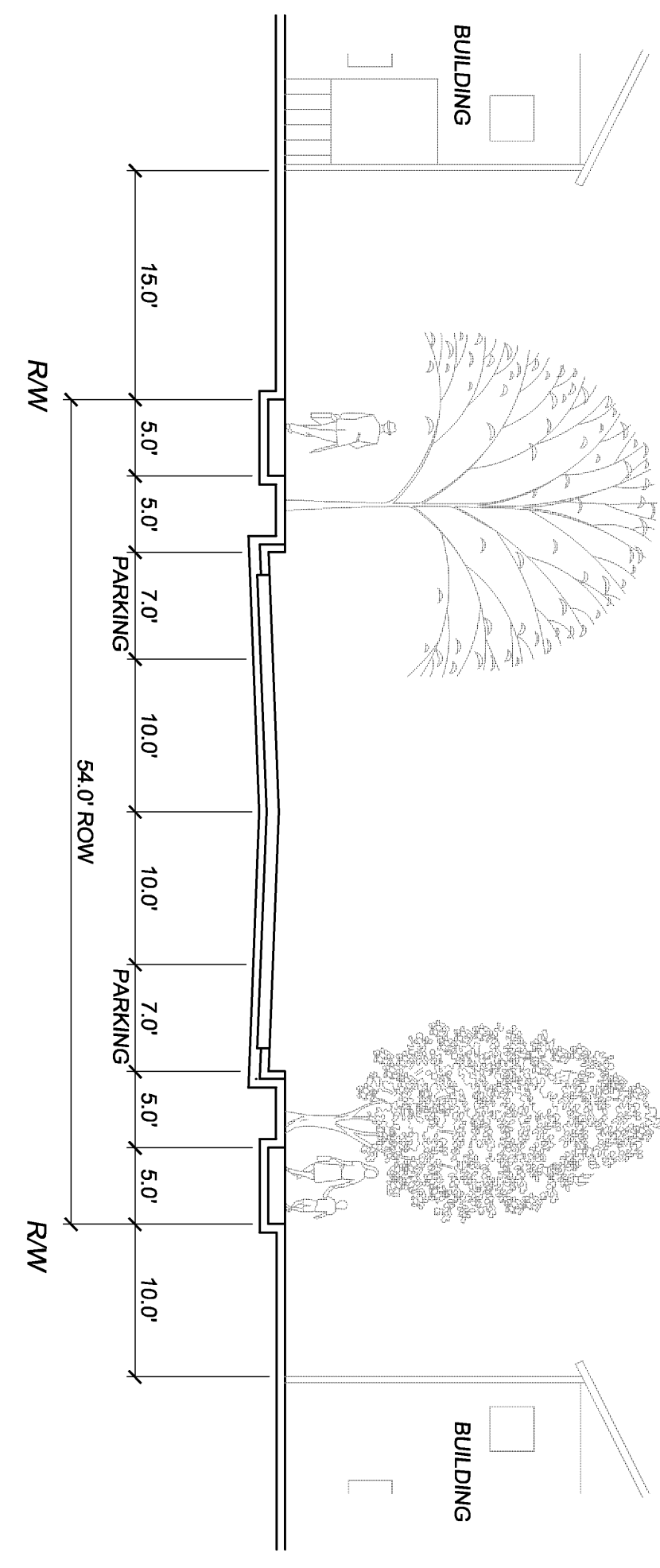


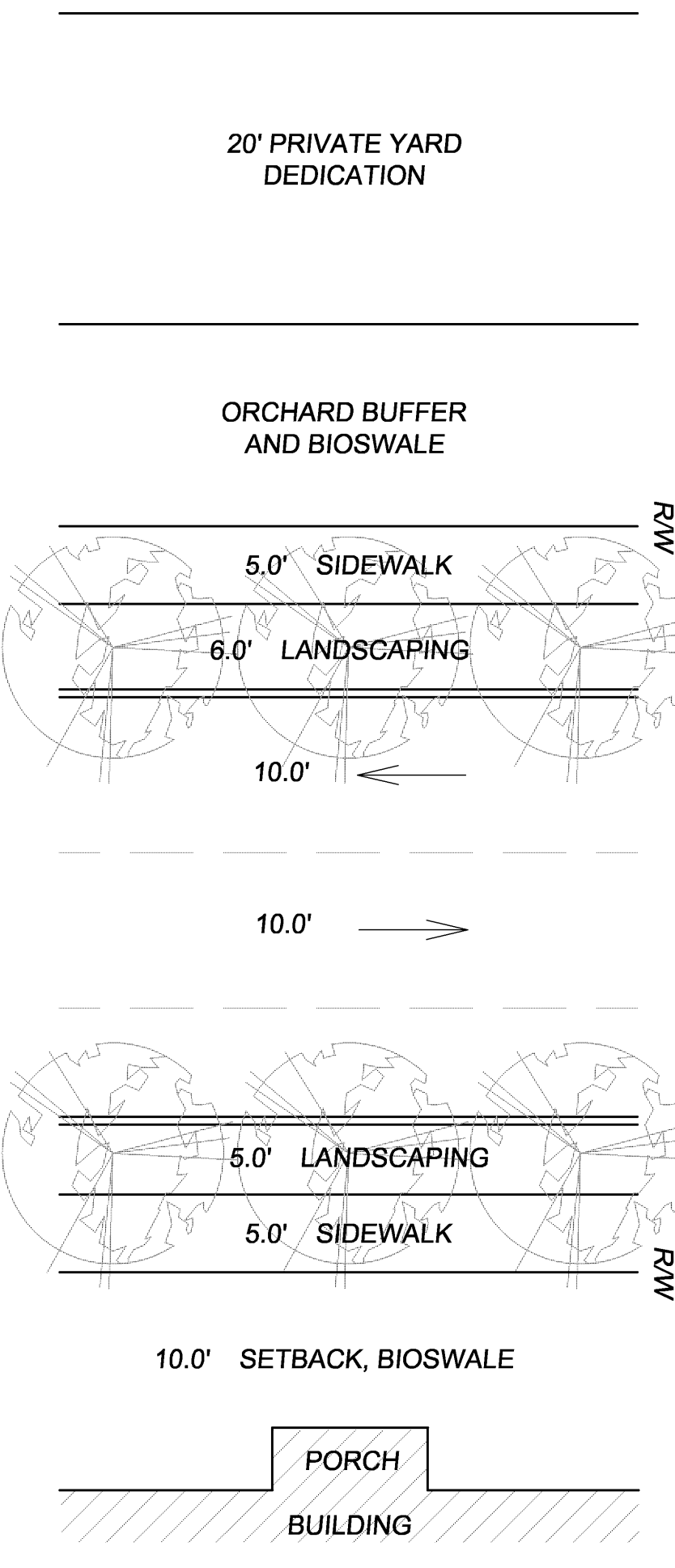
SECTION A
WEST ENTRY STREET



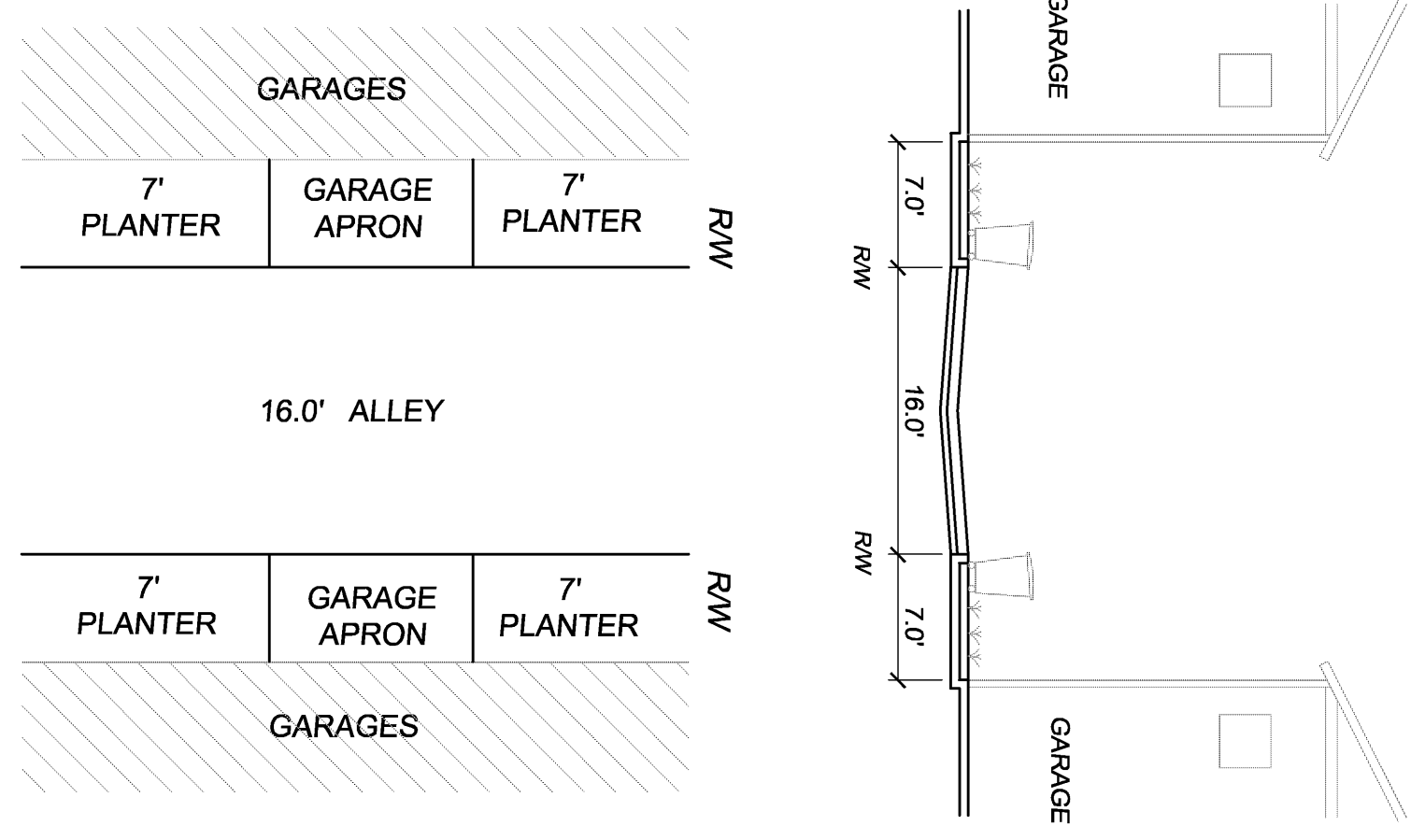
SECTION B
EAST ENTRY ROAD



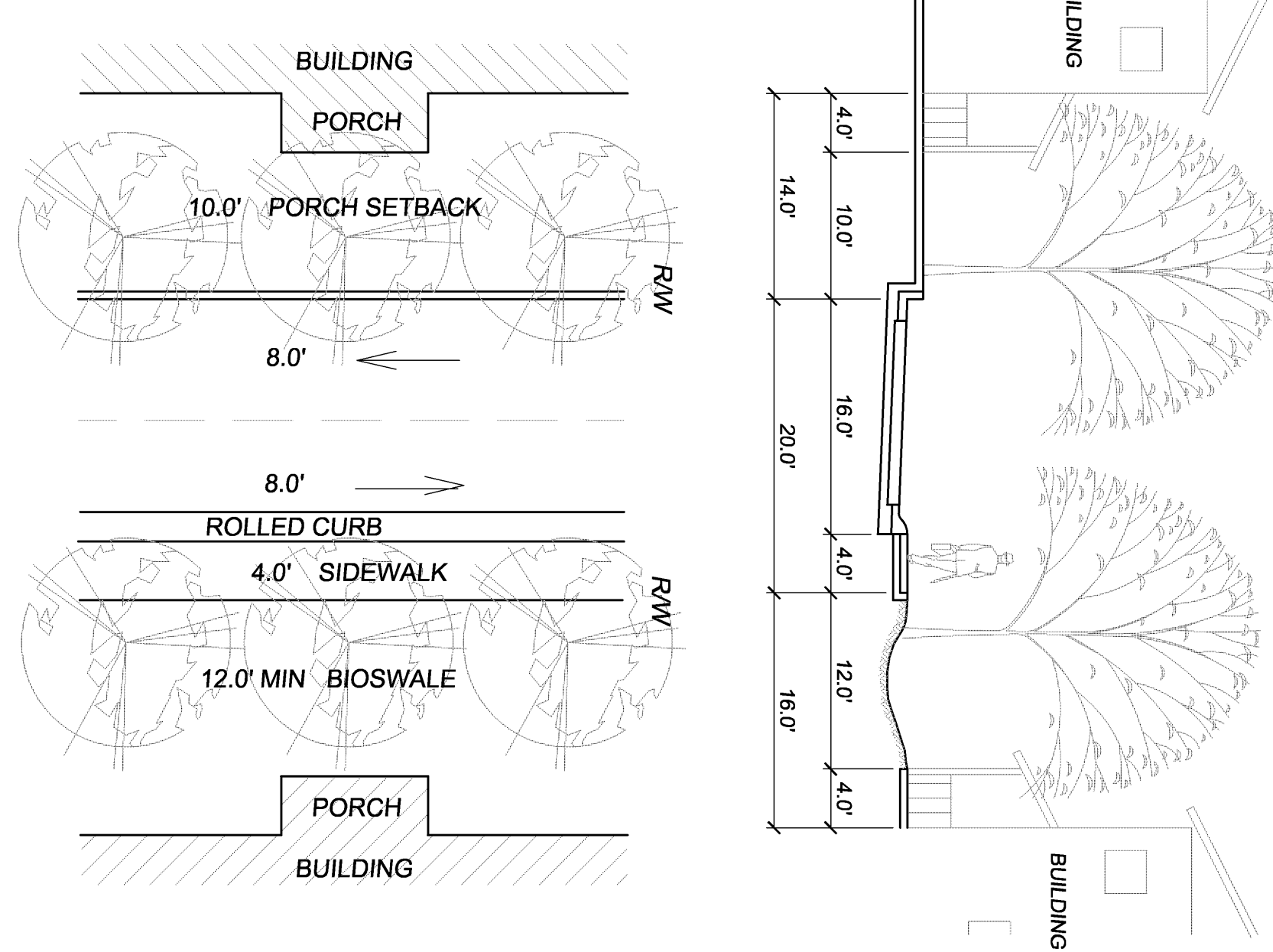
SECTION C
RESIDENTIAL STREET WITH PARKING



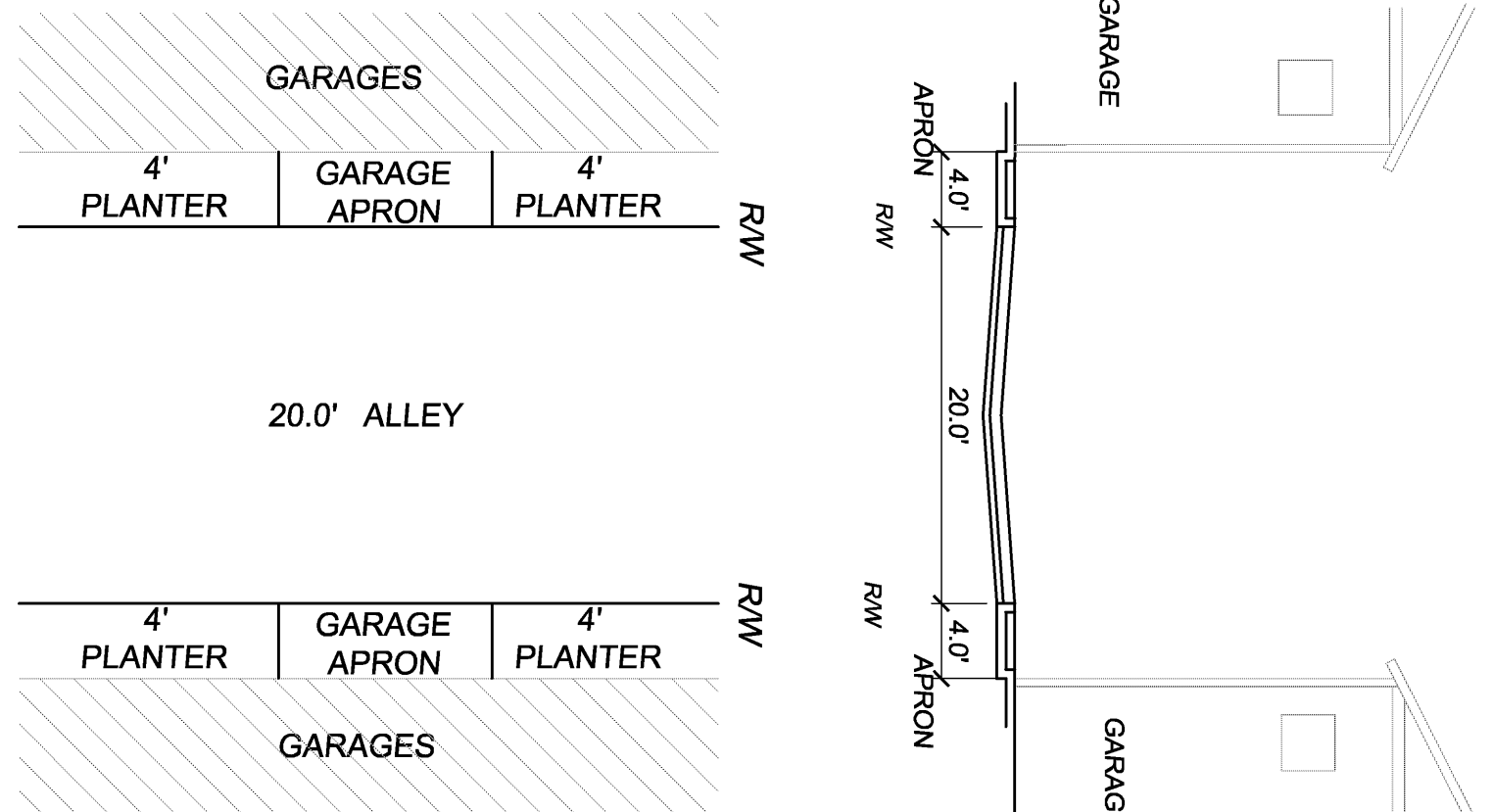
SECTION D
WEST ENTRY ROAD AND SINGLE FAMILY RESIDENTIAL ON ENTRY STREET



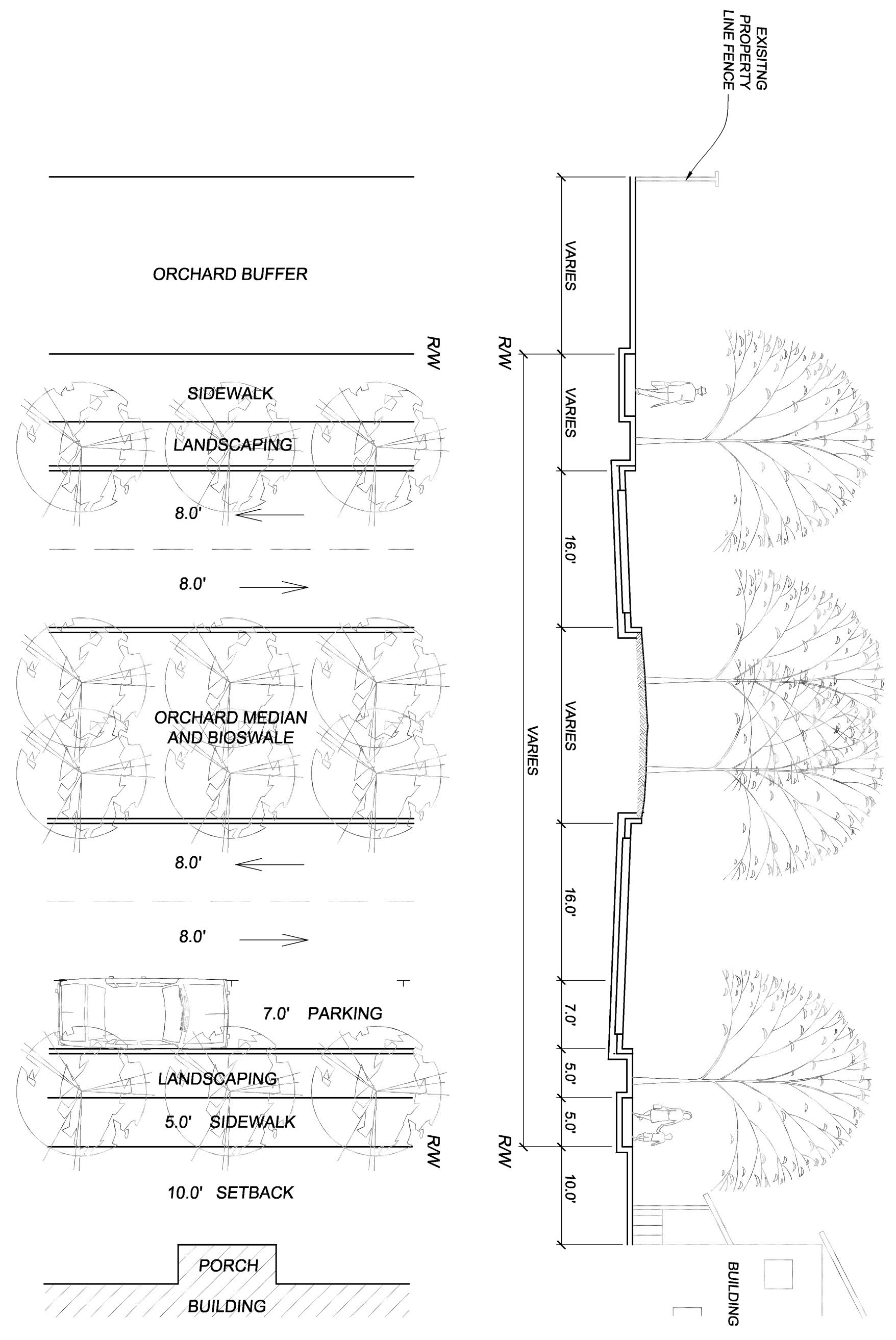
SECTION E
MULTI FAMILY TOWNHOME RESIDENTIAL LANE



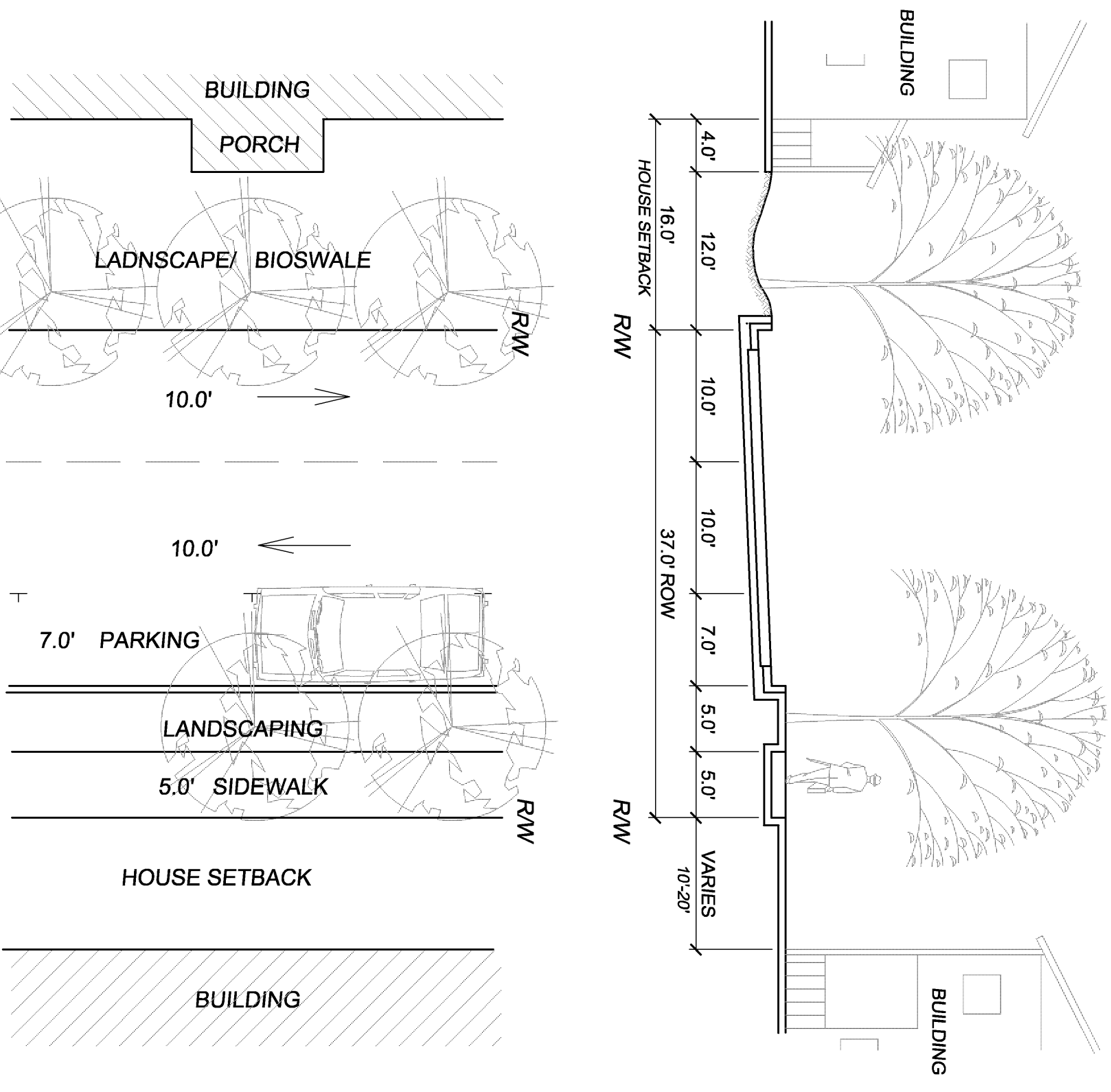
SECTION F
SINGLE FAMILY RESIDENTIAL LANE



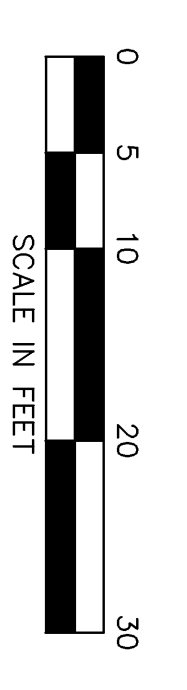
SECTION G
SINGLE FAMILY PRIVATE DRIVEWAY LANE



SECTION H
DIVIDED RESIDENTIAL STREET



SECTION I
SINGLE MULTIFAMILY RESIDENTIAL LANE



GREENWORK
 Project: Planning & Civil Engineering & Landscape Architecture
 1175 20th Street, Suite 200
 San Rafael, CA 94903
 415.452.1111
 15th Street, Suite 200
 San Rafael, CA 94903
 415.452.1111

WILDHORSE RANCH IN DAVIS, CA
 PARLIN DEVELOPMENT
 AUGUST 2008

TYPICAL STREET CROSS SECTIONS