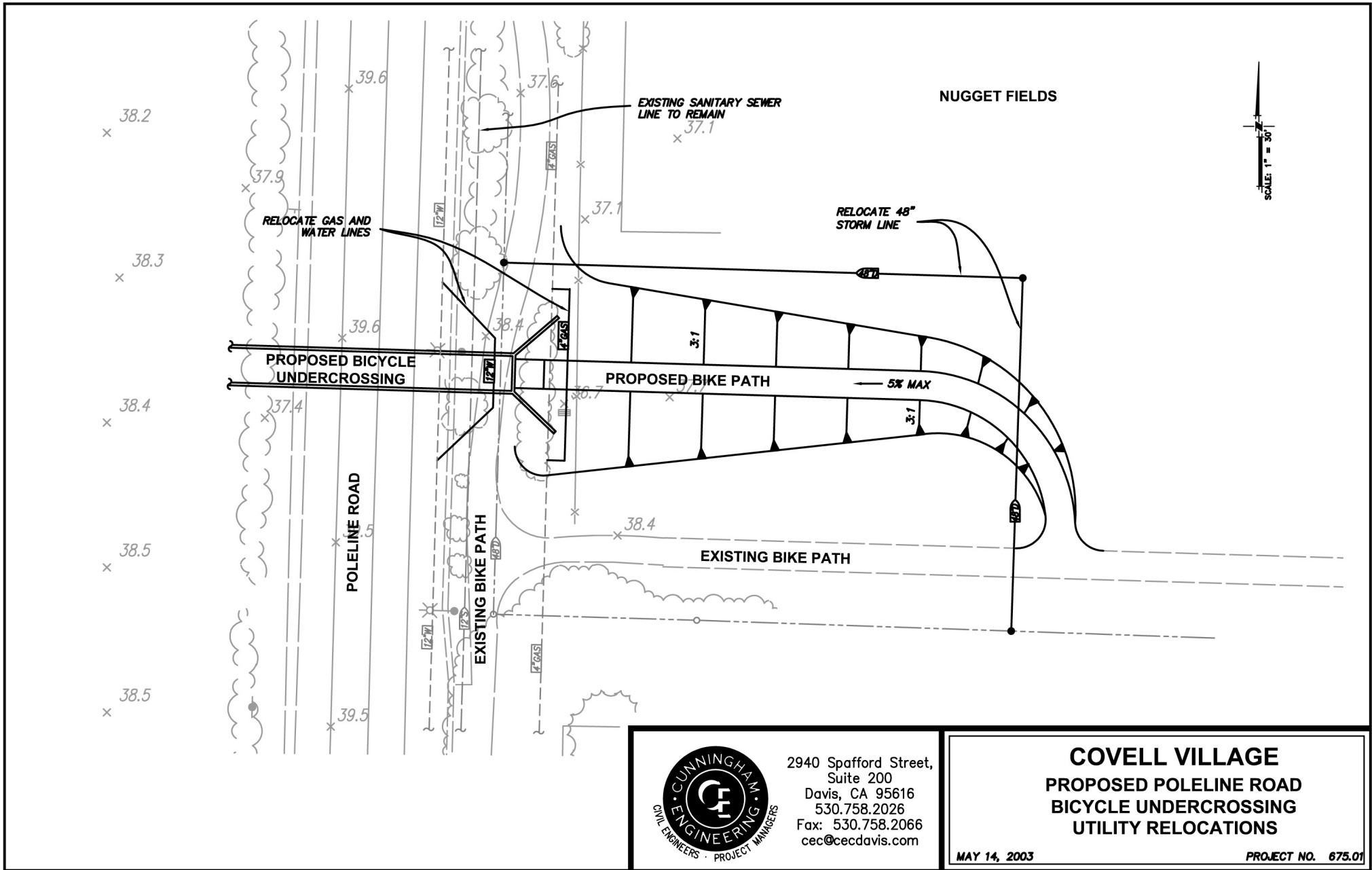


Figure #15



2940 Spafford Street,
Suite 200
Davis, CA 95616
530.758.2026
Fax: 530.758.2066
cec@cecdavis.com

COVELL VILLAGE
PROPOSED POLELINE ROAD
BICYCLE UNDERCROSSING
UTILITY RELOCATIONS

MAY 14, 2003

PROJECT NO. 675.01