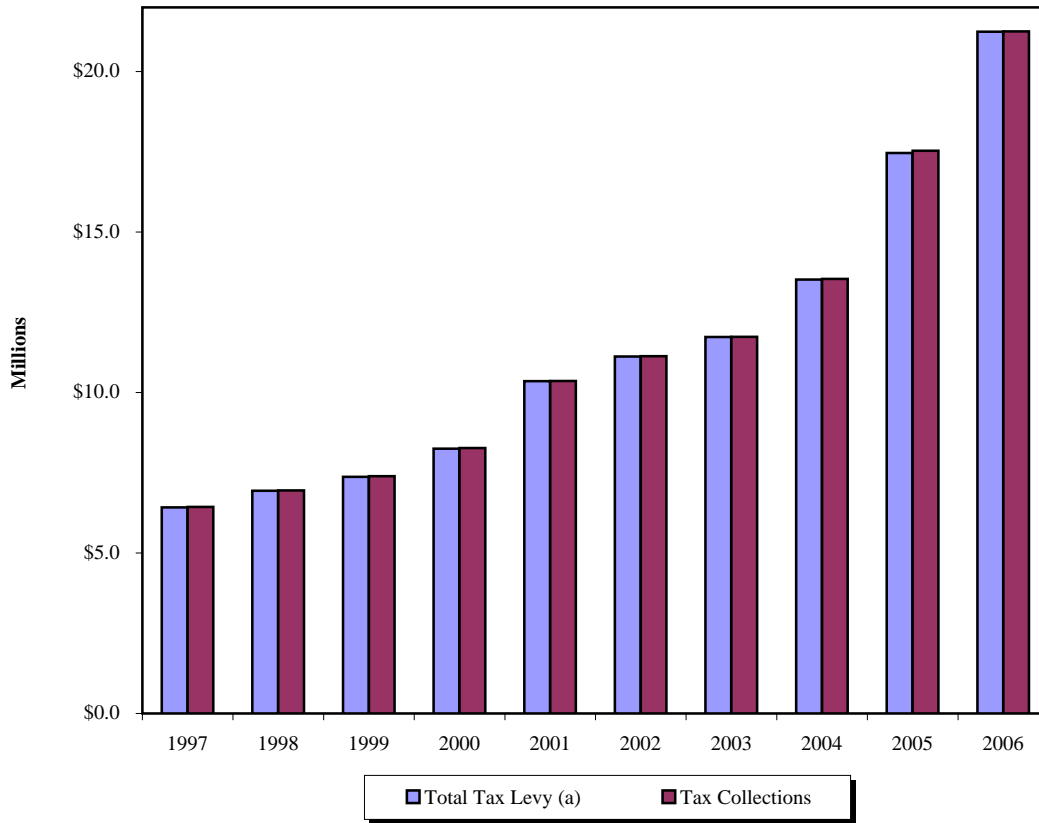


**CITY OF DAVIS
PROPERTY TAX LEVIES AND COLLECTIONS
LAST TEN FISCAL YEARS**



Fiscal Year	Total Tax Levy (a)	Current Tax Collections	Percent of Levy Collected	Delinquent Tax Collections (b)	Total Tax Collections	Percent of Total Tax Collections to Tax Levy
1997	\$6,423,477	\$6,423,477	100.0000%	\$12,833	\$6,436,310	100.1998%
1998	6,941,794	6,941,794	100.0000%	6,146	6,947,940	100.0885%
1999	7,372,007	7,372,007	100.0000%	18,724	7,390,731	100.2540%
2000	8,249,545	8,249,545	100.0000%	21,424	8,270,969	100.2597%
2001	10,355,838	10,355,838	100.0000%	5,116	10,360,954	100.0494%
2002	11,121,408	11,121,408	100.0000%	10,112	11,131,520	100.0909%
2003	11,728,523	11,728,523	100.0000%	8,635	11,737,158	100.0736%
2004	13,521,441	13,521,441	100.0000%	20,582	13,542,023	100.1522%
2005	17,463,356	17,463,356	100.0000%	69,778	17,533,134	100.3996%
2006	21,239,917	21,239,917	100.0000%	11,628	21,251,545	100.0547%

Source: Yolo County Auditor - Controller's Assessed Value Summaries

NOTE: Current tax collections beginning in 1993 have been reduced by a mandatory tax reallocation imposed by the State of California

(a) During fiscal year 1995, the County began providing the City 100% of its tax levy under an agreement which allows the County to keep all interest and delinquency charges collected.

(b) Includes unsecured property taxes that are not included in the Teeter Plan