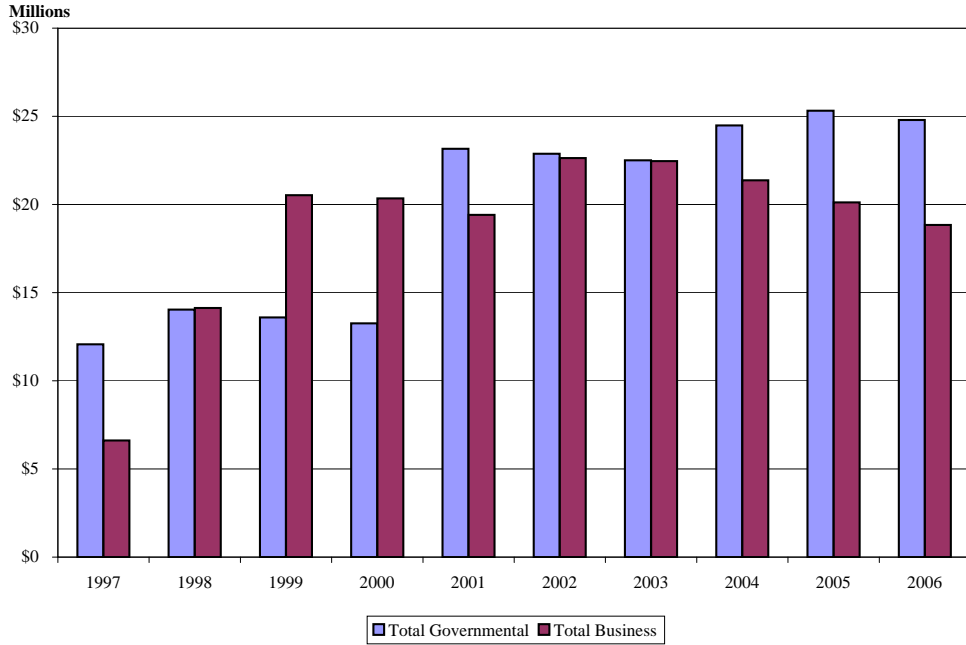


CITY OF DAVIS
Ratio of Outstanding Debt by Type (b)
Last Ten Fiscal Years



Governmental Activities						
Fiscal Year	Tax Allocation Bonds	Certificates of Participation	Special Assessment Payable	General Obligation Bond	Capital Lease Obligations	Total
1997	\$7,770,000	\$2,670,000	\$1,145,070	\$480,000		\$12,065,070
1998	10,160,000	2,580,000	1,075,572	222,000		14,037,572
1999	10,045,000	2,495,000	1,006,074	47,000		13,593,074
2000	9,925,000	2,405,000	919,764	11,000		13,260,764
2001	20,300,000	2,310,000	546,165			23,156,165
2002	20,170,000	2,210,000	492,829			22,872,829
2003	19,965,000	2,105,000	433,092			22,503,092
2004	22,120,000	1,990,000	371,222			24,481,222
2005	21,945,000	1,870,000	305,085		\$1,200,000	25,320,085
2006	21,755,000	1,745,000	236,814		1,051,581	24,788,395

Business-Type Activities							
Fiscal Year	Department of Water Resources Loan	State Revolving Fund Loans	Sewer System Capital Improvement Loan	Total	Total Primary Government	Percentage of Personal Income (a)	Per Capita (a)
1997	\$3,634,142	\$2,984,271		\$6,618,413	\$18,683,483	485.20%	\$351.19
1998	3,400,386	10,732,552		14,132,938	28,170,510	712.53%	513.12
1999	3,363,543	14,698,419	\$2,464,921	20,526,883	34,119,957	811.17%	609.09
2000	3,131,210	14,821,977	2,391,853	20,345,040	33,605,804	732.27%	573.19
2001	2,892,877	14,200,845	2,314,690	19,408,412	42,564,577	888.11%	707.04
2002	6,753,082	13,642,056	2,233,236	22,628,374	45,501,203	932.24%	718.55
2003	7,398,398	12,909,068	2,147,240	22,454,706	44,957,798	884.85%	699.63
2004	7,075,773	12,237,597	2,056,449	21,369,819	45,851,041	854.79%	708.67
2005	6,612,138	11,548,453	1,960,597	20,121,188	45,441,273	N/A	704.52
2006	6,140,320	10,841,172	1,859,400	18,840,892	43,629,287	N/A	675.53

Sources: City of Davis
State of California, Department of Finance (population)
U.S. Department of commerce, Bureau of the Census (income)

Notes: (a) See page 135 (Demographic Statistics) for personal income and population data.
Personal Income information is not available for 2004 to 2006
(b) Debt amounts exclude any premiums, discounts, or other amortization amounts.