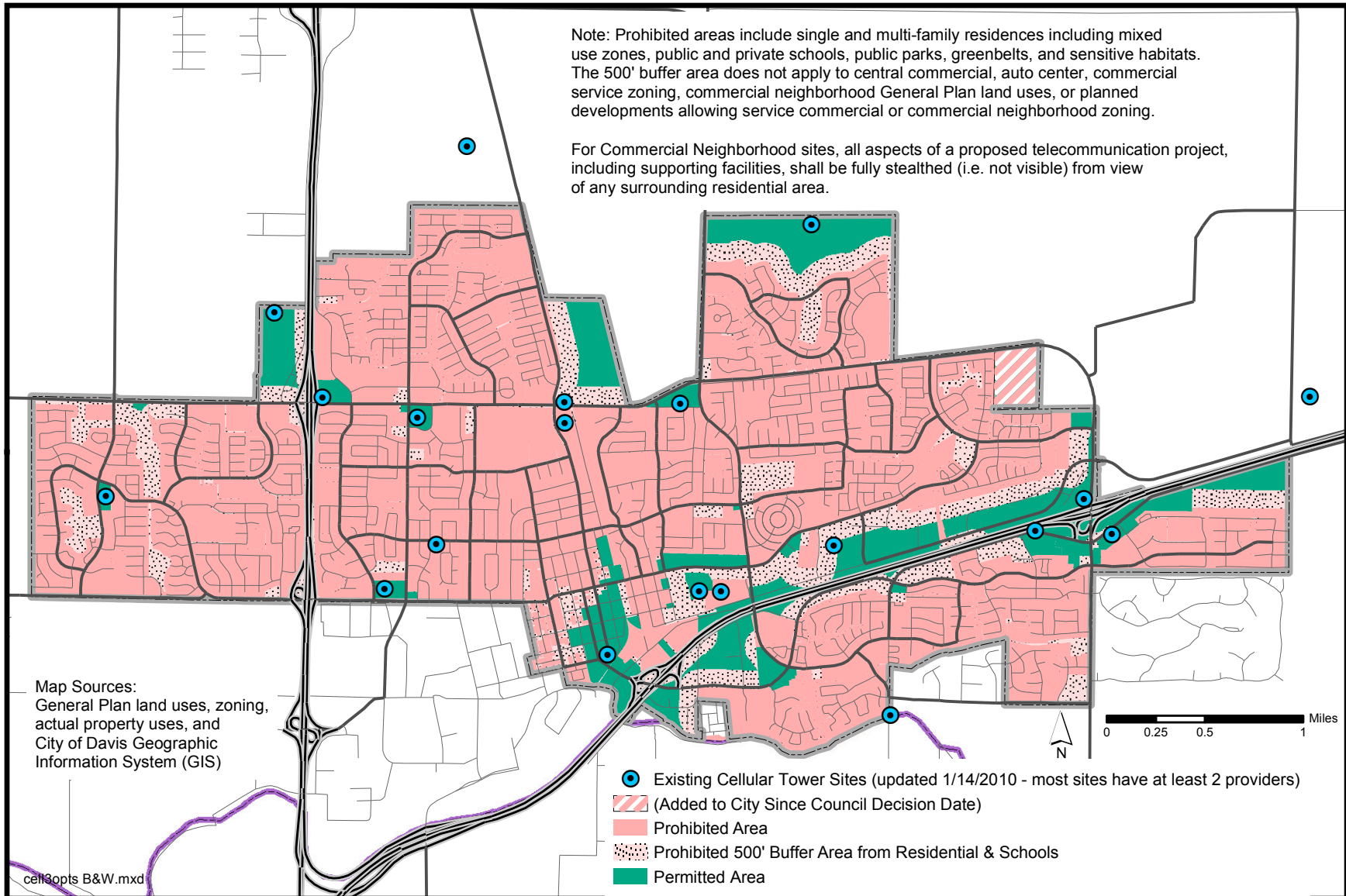


# Telecommunication Facility Map As Approved by City Council 3/16/2004

Updated: 9/22/2011

Note: Prohibited areas include single and multi-family residences including mixed use zones, public and private schools, public parks, greenbelts, and sensitive habitats. The 500' buffer area does not apply to central commercial, auto center, commercial service zoning, commercial neighborhood General Plan land uses, or planned developments allowing service commercial or commercial neighborhood zoning.

For Commercial Neighborhood sites, all aspects of a proposed telecommunication project, including supporting facilities, shall be fully stealthed (i.e. not visible) from view of any surrounding residential area.



Land uses and property uses for areas displayed on this map have not been verified. Actual or planned uses may be different than depicted. This map is not the authoritative document for location of property boundaries and the map is not intended to be used as a survey product.

This map is to be used for general information only. Specific site information can be obtained from the Department of Community Development and Sustainability.