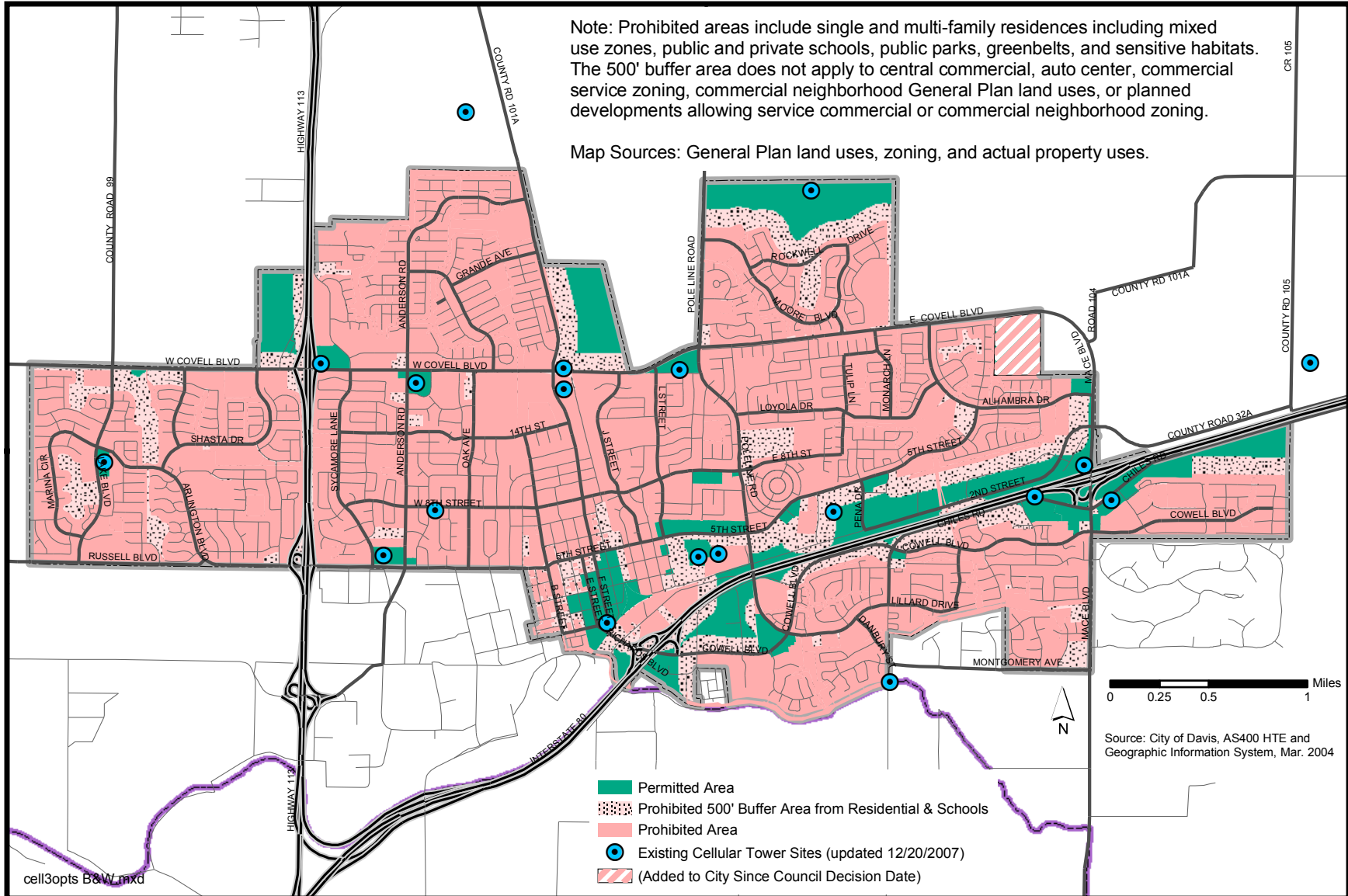


Telecommunication Facility Map As Approved by City Council 3/16/2004

Updated: 12/20/2007

Note: Prohibited areas include single and multi-family residences including mixed use zones, public and private schools, public parks, greenbelts, and sensitive habitats. The 500' buffer area does not apply to central commercial, auto center, commercial service zoning, commercial neighborhood General Plan land uses, or planned developments allowing service commercial or commercial neighborhood zoning.

Map Sources: General Plan land uses, zoning, and actual property uses.



Land uses and property uses for areas displayed on this map have not been verified. Actual or planned uses may be different than depicted. This map is not the authoritative document for location of property boundaries and the map is not intended to be used as a survey product.

This map is to be used for general information only. Specific site information can be obtained from the Community Development Department.