

MEETING NOTES

PROJECT	Fourteenth Street / Villanova Drive Improvement Project	ORGANIZER	Brian Abbanat
SUBJECT	Davis Senior High School Environmental Science Class	DATE	April 24, 2018
LOCATION	Davis Senior High School	TIME	11:00am to 11:45am

ATTENDEES:

City of Davis: Brian Abbanat

Alta Planning + Design: Lisa Beyer

Stakeholders: Eric Bastin's Environmental Science Class

MEETING NOTES:

- Brian introduced Lisa and explained why we were here to talk with the class.
- Lisa shared a presentation:
 - What makes *Streets* into **Complete Streets**?
 - What is the *14th/Villanova Corridor Improvement Project*?
 - Which **Design Tools** can help improve the street for walking, biking and transit?
 - Exercise:
 - Mapping Your Route to School
 - Designing Your Street
- We had a short class discussion about the transportation and environmental impacts. The students shared how they travel to school. The overwhelming majority drive (juniors), a few walk, a few bike, and a few take transit.
- Group Exercise: Asked the students to map their commute and share their own ideas about the challenges and opportunities on the corridor. Comments and ideas included the following (see attached mapping exercise):
 - Make the bike lanes along the curve between Reed and Redwood more visible
 - Improve visibility of bikes at the Oak intersection
 - Add more student parking in the HS lot off of Oak
 - Make the bike lanes more visible adjacent to the schools, use green paint
 - Add speed bumps to slow people down
 - Oak and B Streets are problems, add more green markings
 - Concern about low visibility when pulling out of the school parking lots.
 - Anderson light is quick, if you are not watching as a bike, you will miss it.
 - Suggest adding a 2-way pathway along Oak near the stadium
 - Suggested a stop light at Oak/14th
 - Suggested tree planting and lighting along 14th between Oak and F
 - Suggested a bike gondola, powered by bikes, with a yearly pass.
 - Suggested left hand turn from Oak into the HS parking lot.

- Suggested an RRFB and bus parking at Oak and 14th.
- Suggested ped hawk at HS entrance crossing
- Add lighting along HS frontage

ATTACHEMENTS

- Complete Streets Presentation
- Scans of the maps



14th/Villanova Corridor Improvement Project

A photograph of a man and two children walking on a sidewalk in a residential neighborhood. The man is wearing a white t-shirt with the number '32' and glasses. The children are wearing jackets and shorts. The background shows a house with a garage and a street sign. The entire image has a blue tint.

Our Mission: Create active communities

We are committed to transforming communities one trip, one step, one street, park, trail, and intersection at a time.

Today's Class

1. What makes *Streets* into ***Complete Streets***?
2. What is the *14th/Villanova Corridor Improvement Project*?
3. Which ***Design Tools*** can help improve the street for walking, biking and transit?

Exercise:

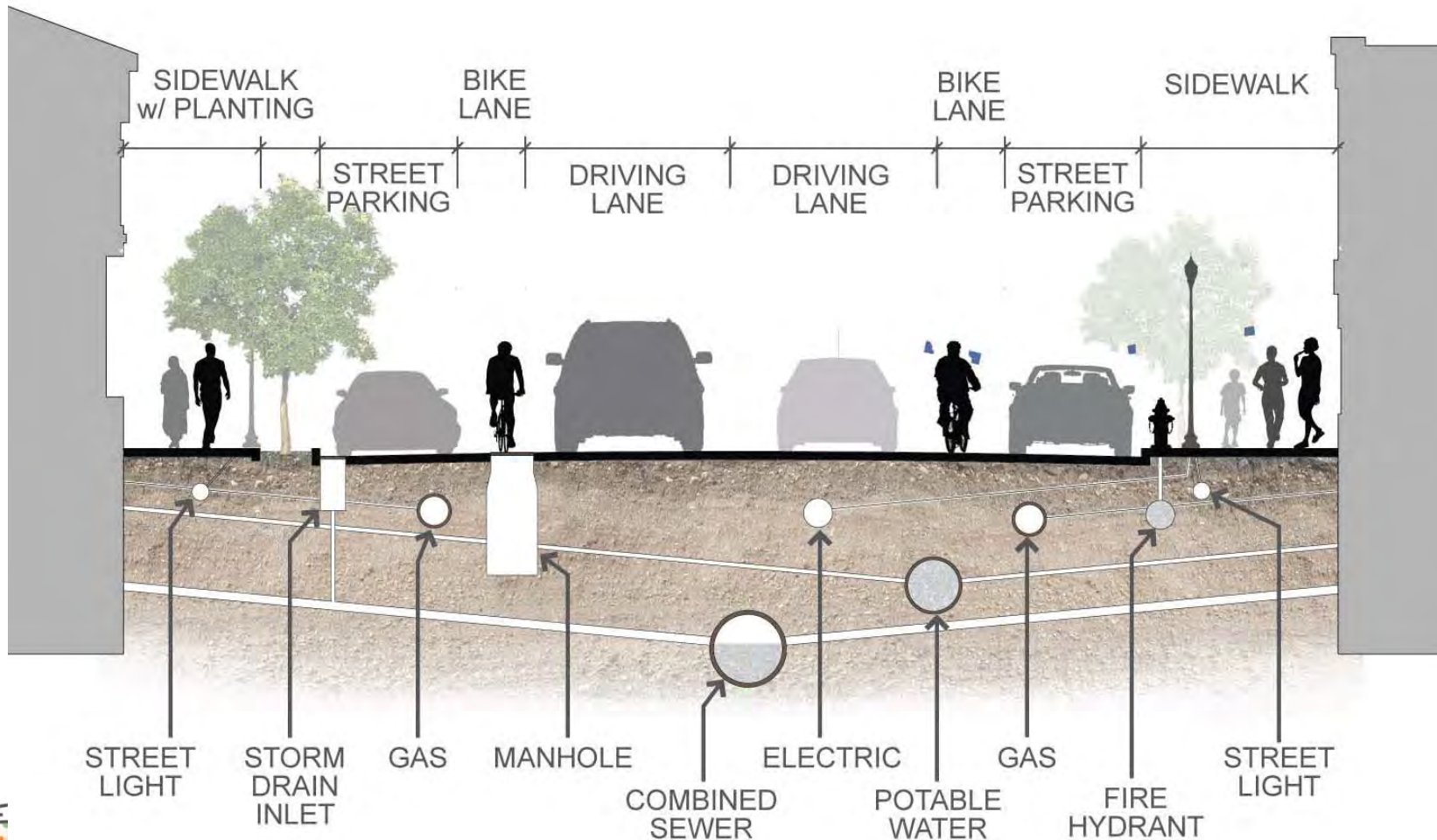
- Mapping Your Route to School
- Designing Your Street



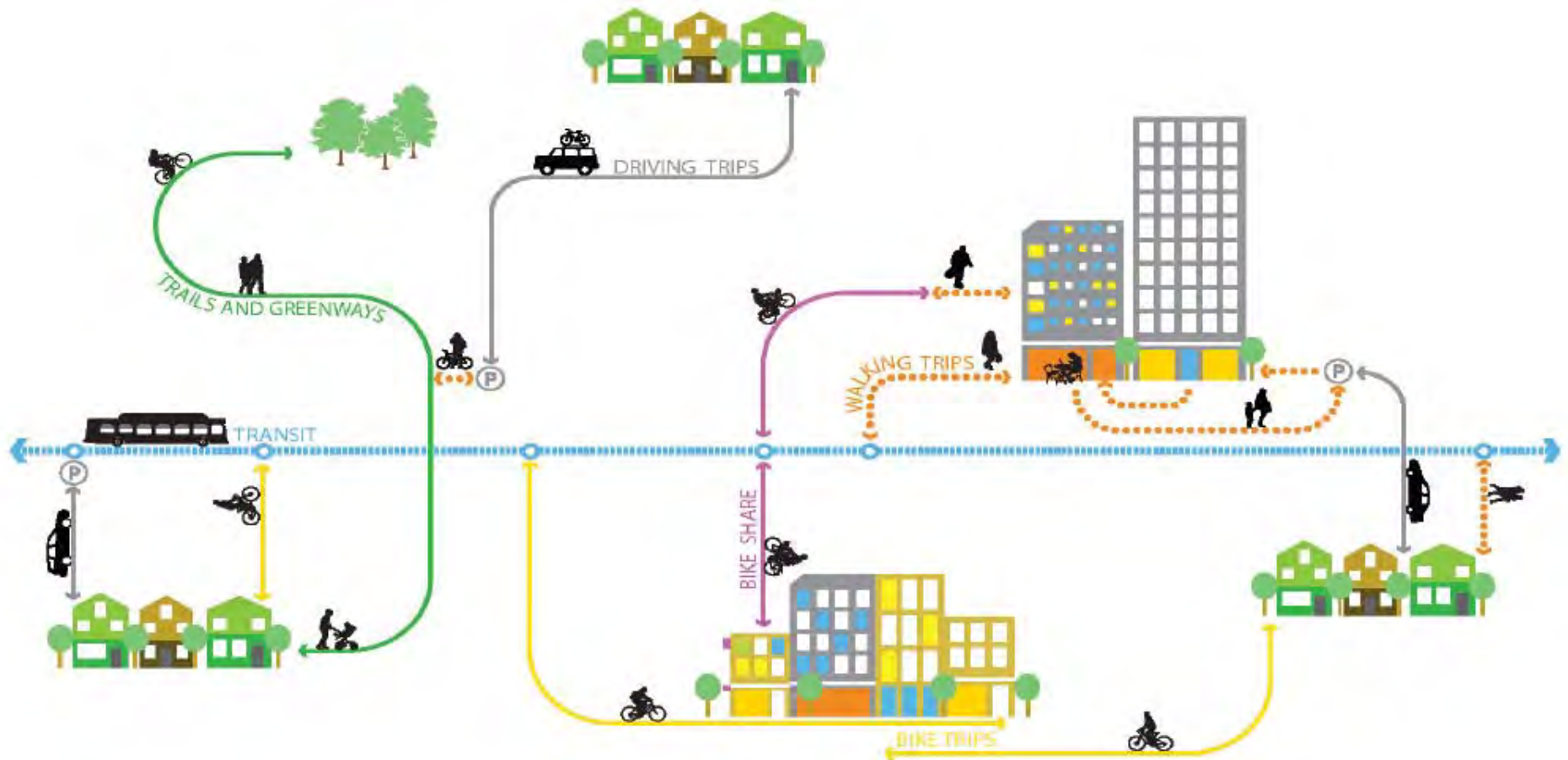
What are Complete Streets?



Demands for Space in the ROW



Streets for All



Complete Streets are the key to an overall transportation network that connects trails, transit, employment centers, recreation, and residential areas to each other while providing economic, social, and environmental benefits to communities. Alta has worked with multiple jurisdictions to develop policy frameworks for how Complete Streets and active transportation can be enhanced to improve quality of life.

Complete Streets

Balance the needs of multiple users

- **PEOPLE:** Pedestrians, Bicyclists, Public Transportation Riders, Service and Delivery Providers, Drivers
- **ECOLOGICAL SERVICES:** Shade Trees, Landscape Buffers, Stormwater Bioswales

Improve safety, comfort and mobility with traffic calming

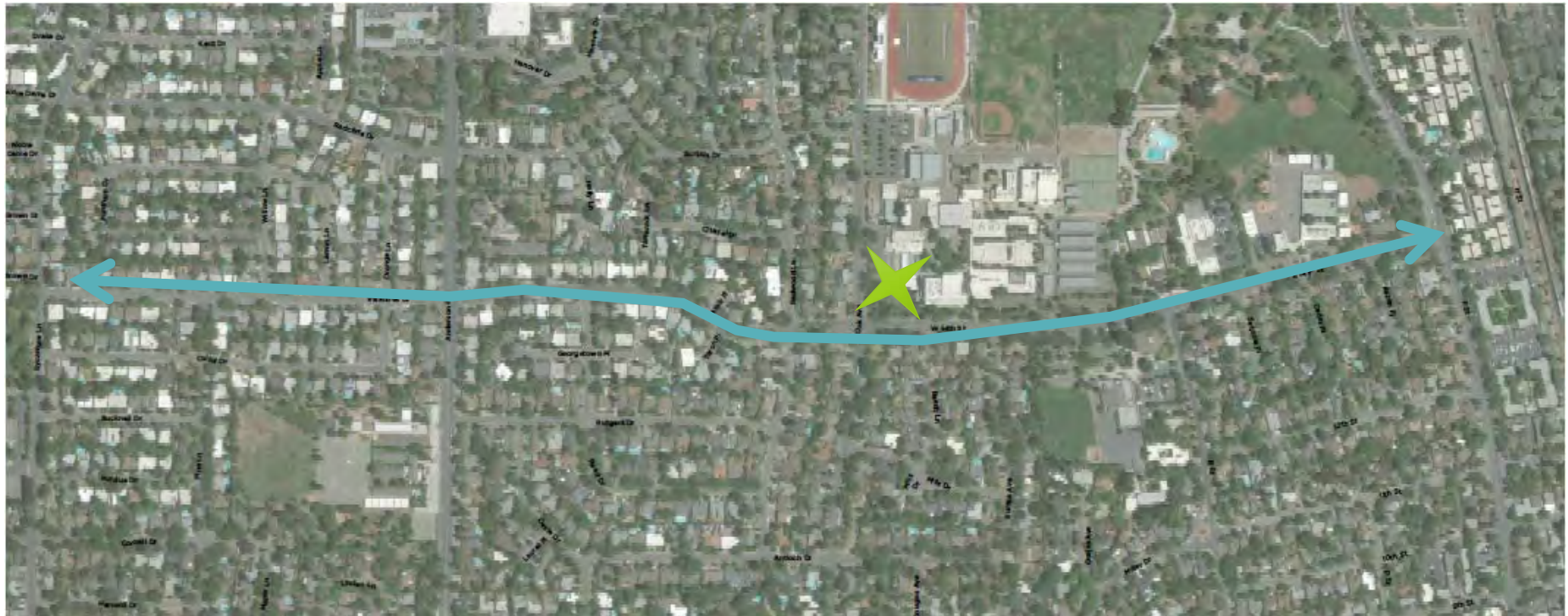


14th/Villanova Street Improvement Project



14TH / VILLANOVA CORRIDOR IMPROVEMENT PROJECT

Project Area



Area Map

1 Mile Corridor of 14th and Villanova

Start: Sycamore

End: F Street



14TH / VILLANOVA CORRIDOR IMPROVEMENT PROJECT

Identify the Users

(1) What modes use this corridor?

(2) How do you travel on this corridor?

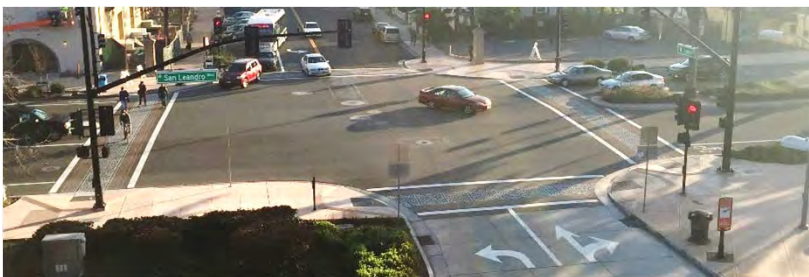


Which Design Tools Can We Use to Improve the Corridor?



Enhanced Pedestrian Crossings

San Leandro Boulevard/Juana Avenue
San Leandro, CA



Jade Street/Celadon Street
Davis, CA



Separated Bicycle Facilities

Rosemead Boulevard
Temple City, CA



Telegraph Avenue
Oakland, CA



College Avenue – Modesto Modesto Junior College



14TH / VILLANOVA CORRIDOR IMPROVEMENT PROJECT

Bus Stops and Floating Islands

First Street (demo) - Los Angeles, CA



Howard Street - San Francisco, CA



Hearst Avenue - Berkeley, CA



Los Angeles Street - Los Angeles, CA



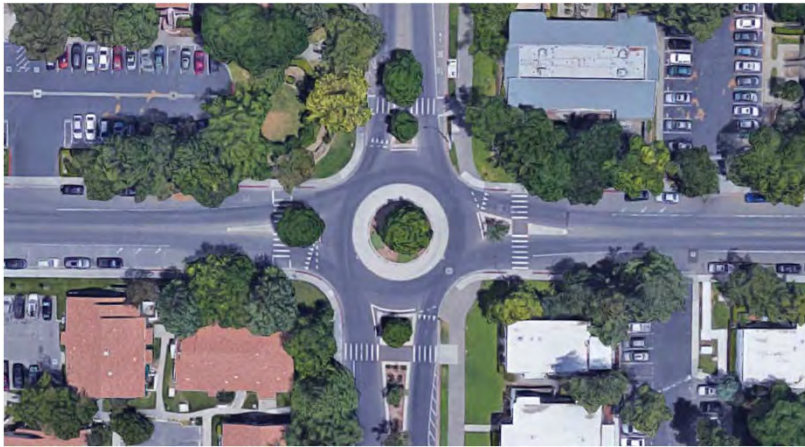
Landscape Median Treatments



14TH / VILLANOVA CORRIDOR IMPROVEMENT PROJECT

Roundabouts

Anderson Road/Alvarado Avenue
Davis, CA



Orchard Avenue/Joyce Street
Hayward, CA



Protected Intersections

Broadway/200W
Salt Lake City, UT



Covell Boulevard/J Street
Davis, CA



Exercise: Designing your complete street!





Pedestrian Refuge Area



Pedestrian Median Push Button



Speed Feedback Signs



Curb Extensions



High-Visibility Crosswalks



Green Pavement Markings



Rectangular Rapid Flashing Beacon (RRFB)



HAWK Beacon
(Pedestrian Hybrid Signal)



Raised Crossing



Bike Box



Two-Stage Turn Box



Protected Intersection



Large Canopy Trees and Lawn



Bioswales



Curb Extension Landscaping



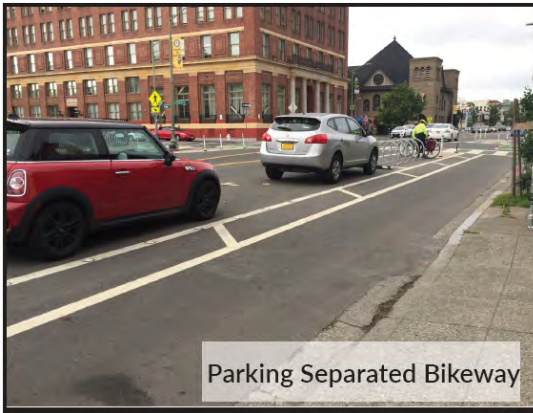
Pedestrian Scale Lighting



Vehicle & Pedestrian Scale Lighting



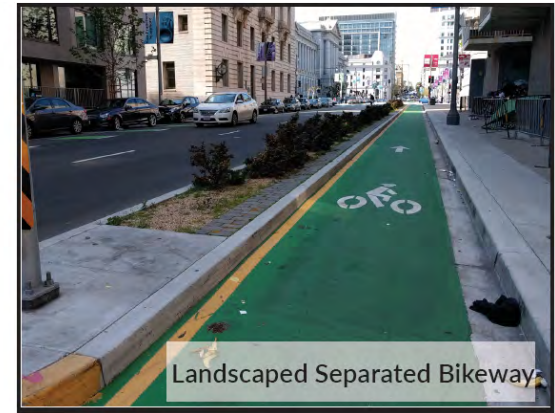
Creative/Decorative Lighting
Image: Urdesign



Parking Separated Bikeway



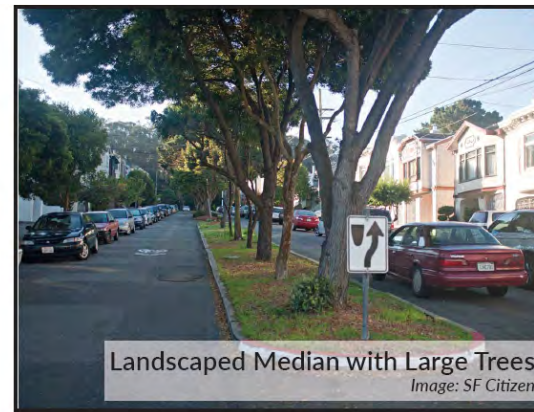
Delineator Separated Bikeway



Landscaped Separated Bikeway



Landscaped Median
Image: Barrio Planners



Landscaped Median with Large Trees
Image: SF Citizen



Parklets
Image: LADOT People St



Brian Abbanat
Senior Transportation Planner
Transportation Division, City of Davis
babbanat@davisofdavis.org

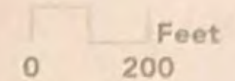
Lisa Beyer, RLA, ASLSA
Project Manager
Alta Planning + Design
lisabeyer@altaplanning.com

0 Feet 200

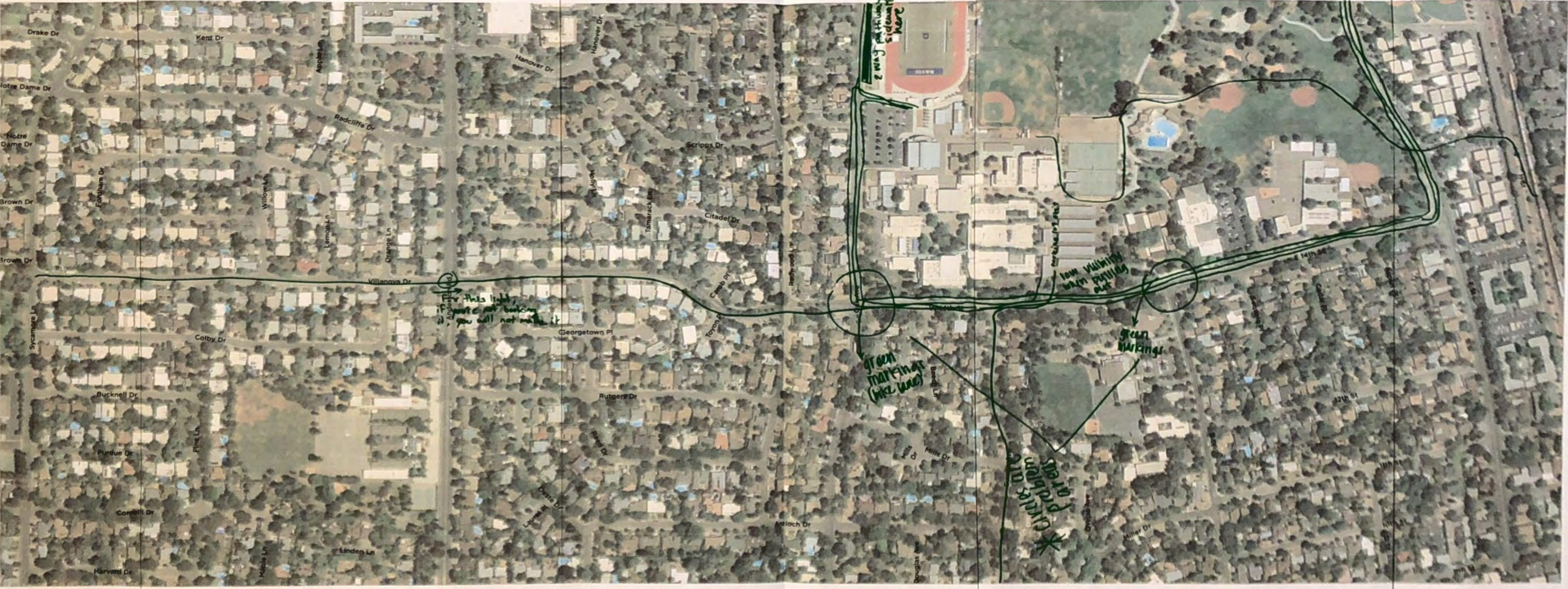


2-7



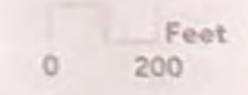


42



speed bumps to slow people down

more designated bike lane lines
make bike lane green



27



0 Feet 200



27

