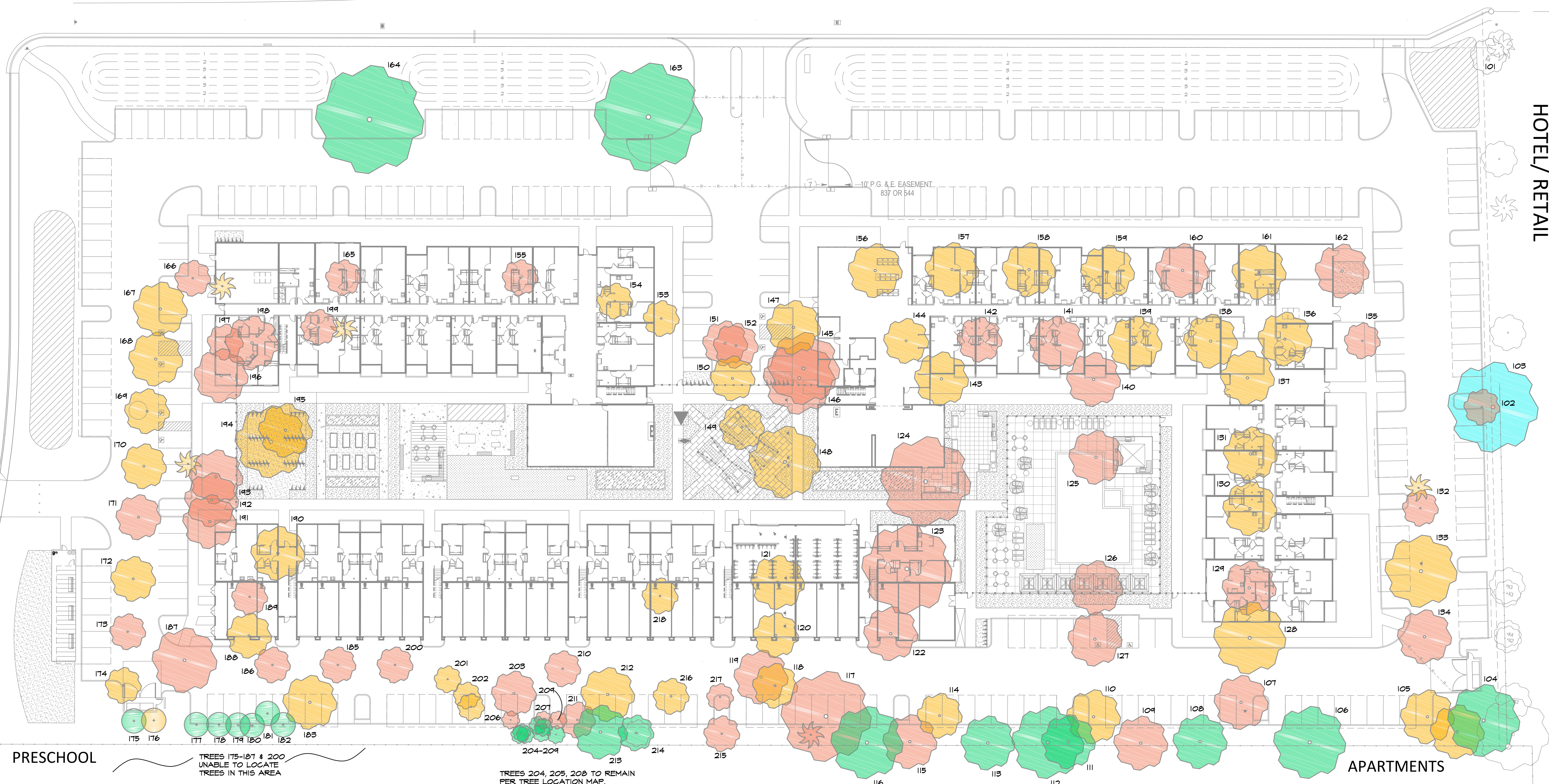


CHILES ROAD

LA VIDA WAY

HOTEL/RETAIL



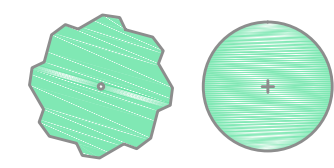
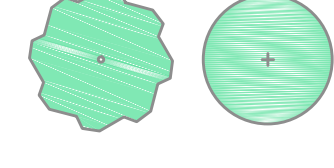
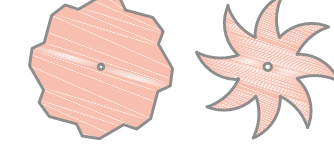




PRESCHOOL

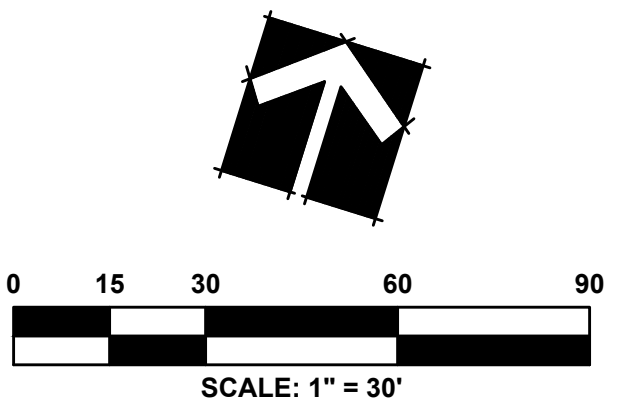
TREES 175-181 & 200
UNABLE TO LOCATE
TREES IN THIS AREA

TREES 204, 205, 208 TO REMAIN
PER TREE LOCATION MAP.
TREES 206, 207, 209 TO BE
REMOVED PER TREE LOCATION MAP.

APARTMENTS

LEGEND

-   TREES TO REMAIN AND PROTECT
-   TREES TO BE REMOVED PER ARBORIST REPORT
-   TREES TO BE REMOVED DUE TO SITE DEVELOPMENT
-  TREE ALREADY REMOVED DUE TO LIMB FAILURE

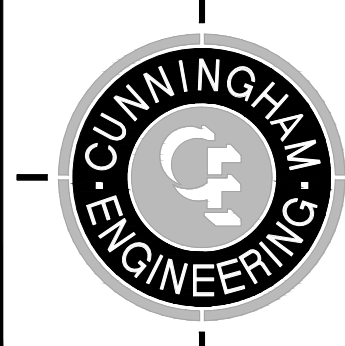


DESIGNED BY BK
DRAWN BY BK/LG
CHECKED BY ME
SCALE
1" = 30'

DAVIS

**3820 CHILES ROAD
EXISTING TREES PLAN**

CALIFORNIA



CECWEST.COM
Project Planning ■ Civil Engineering ■ Landscape Architecture
■ Sacramento Office ■ Davis Office
2120 20th Street, Suite Three 2940 Spafford Street, Suite 200
Sacramento, CA 95818 Davis, CA 95618
(916) 455-2026 (530) 758-2026

NO.	DATE	REVISIONS	BY	APPD.	SHEET
#1	8/27/18	EXISTING TREE LABELS	OM		L5 OF
					DATE: 11/28/2018
					JOB NO: 1579.02