

Introduction to Bicycle Safety



Instructors:

Jennifer Donofrio – City of Davis Bike and Pedestrian Coordinator

Joshua Endow-Monteiro – City of Davis Bike Education Coordinator

Overview

- 
- Types of bike facilities
 - Where to bike
 - How to bike in traffic and on paths

Types of Bicycle Facilities



Separated Bike Path



Not Required to Use

Separated Bike Path



May provide a shorter, more direct route

Cycle Track

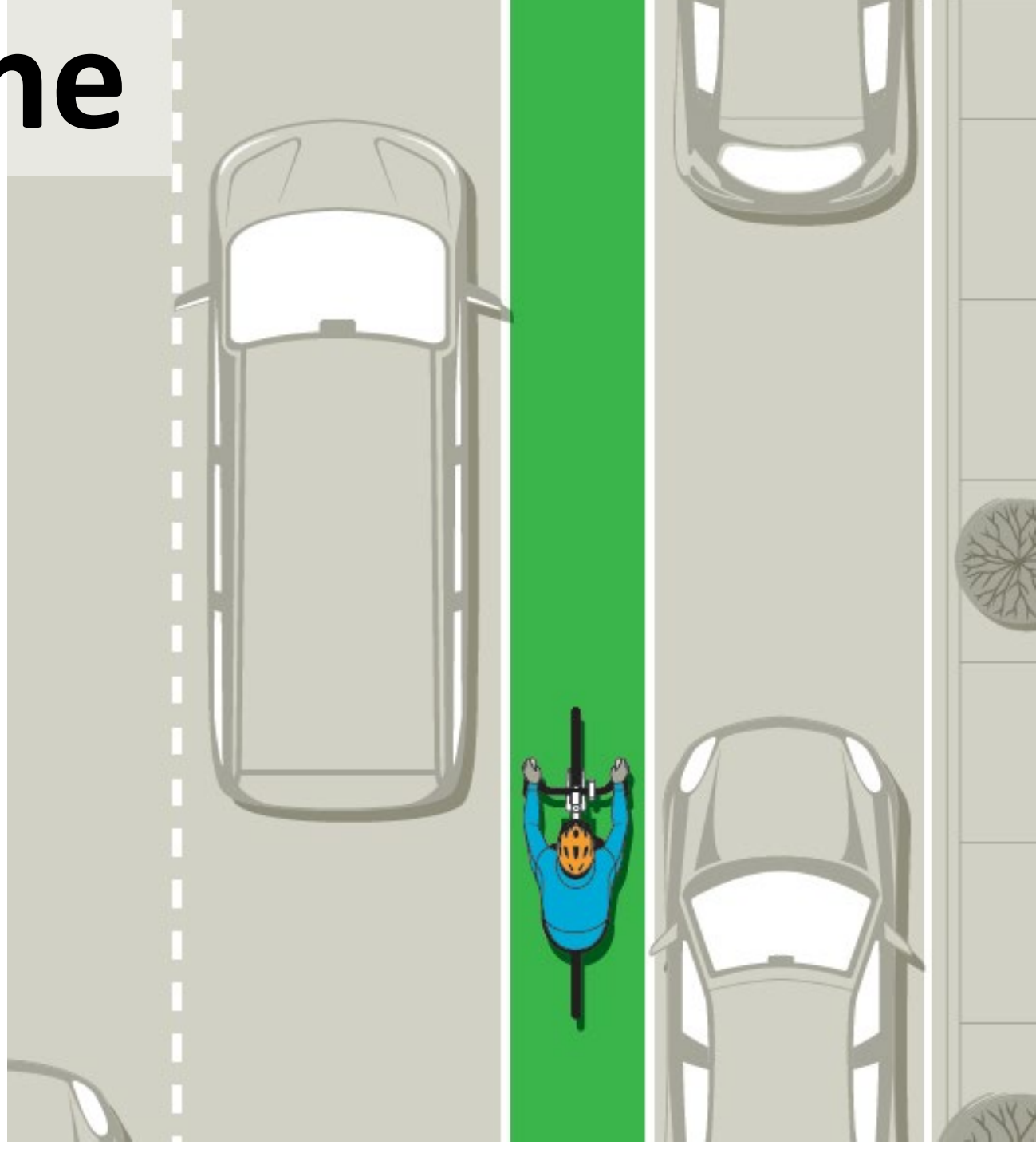


Follow arrows and other markings

Bike Lane

Required
to ride in
bike lane

UNLESS
it is
unsafe



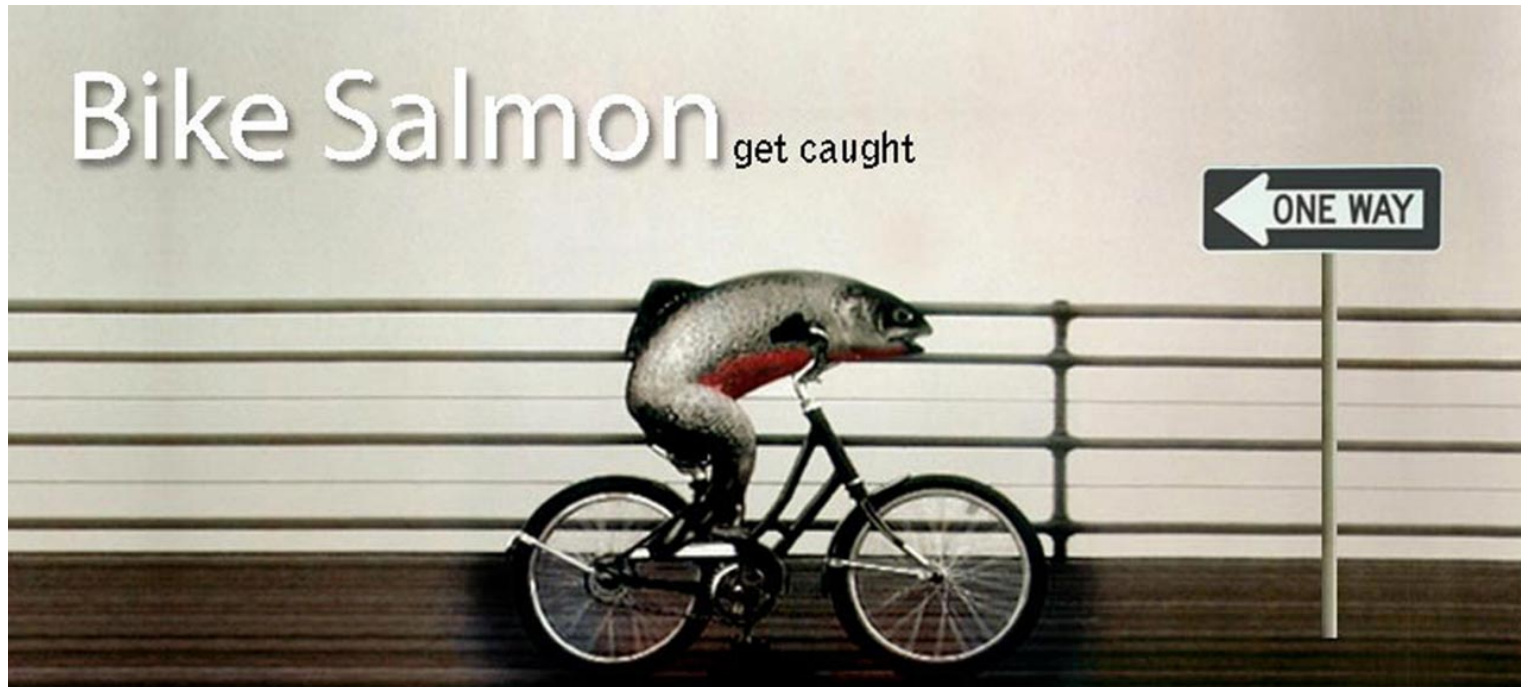
Bike Lane



Ride in same direction as traffic

How to Bike in Traffic

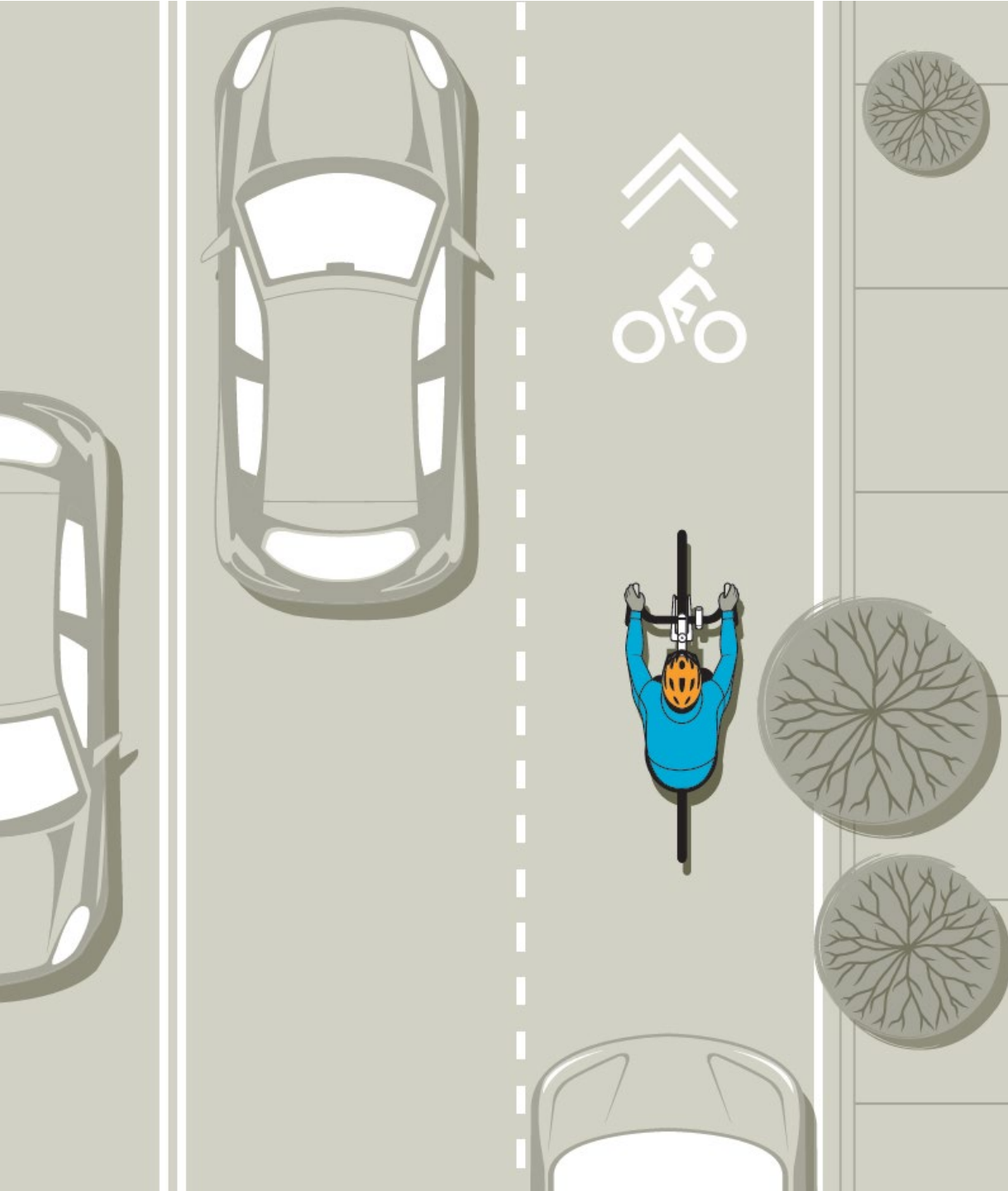
- Ride with Traffic

A photograph of a salmon riding a bicycle on a wooden pier. The salmon is positioned on the bike, facing right. To the right of the salmon is a 'ONE WAY' sign with an arrow pointing to the left. The background is a light-colored wall with horizontal lines.

Bike Salmon get caught

Why not go with the flow?
If you ride against traffic, not only are you endangering your own personal safety, but you're also putting others at risk. Ride the same direction as posted.

Another safety message from
THE DENVER CRUISER RIDE



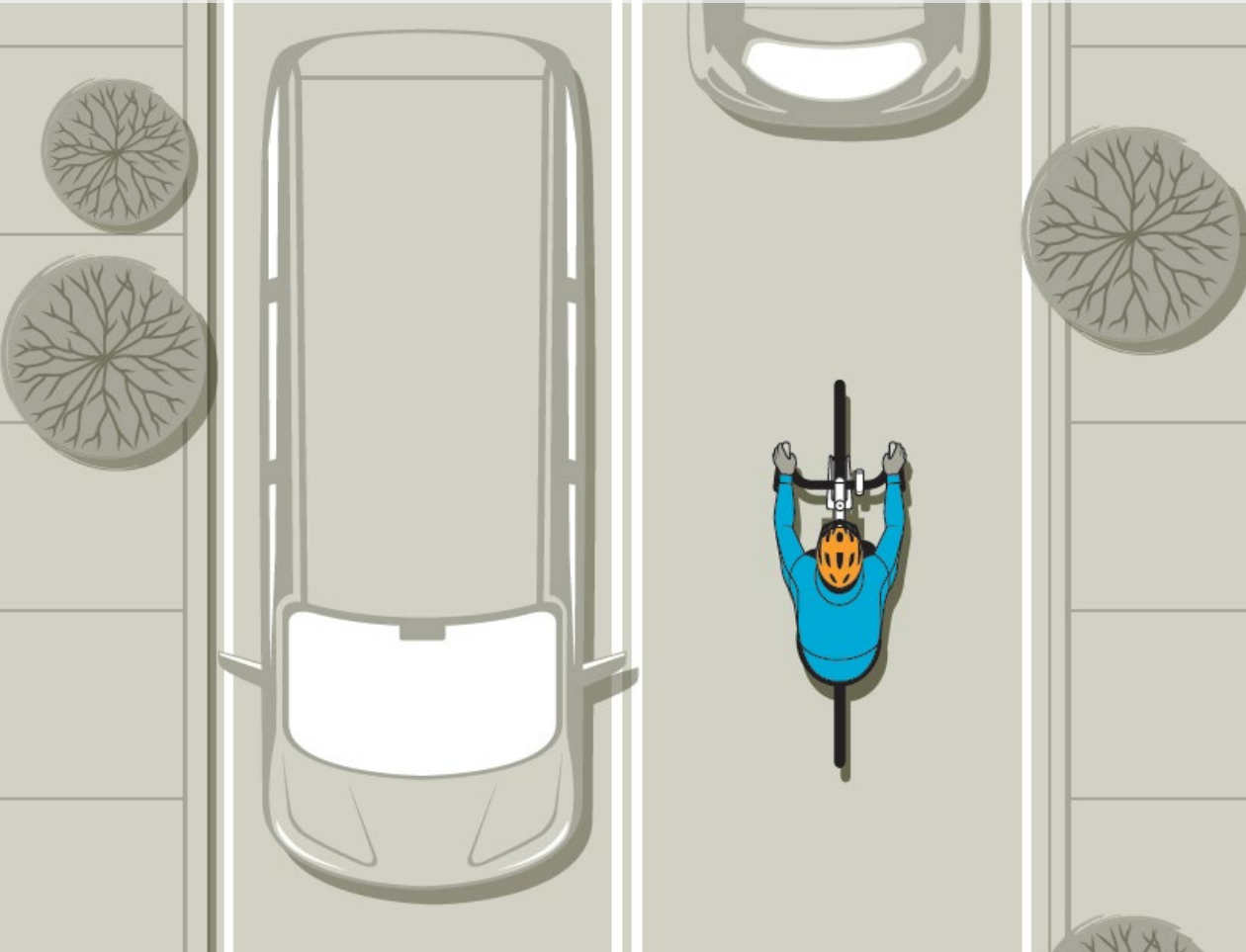
**Shared Lane
Arrow**

Sharrows



**Ride
on the
sharrow**

Street without bike facilities



Ride in the travel lane

Use full lane if less than 14 ft (4 m) wide

Street without bike facilities



Ride with traffic in the travel lane

Avoid sidewalk riding



Not allowed downtown and on campus

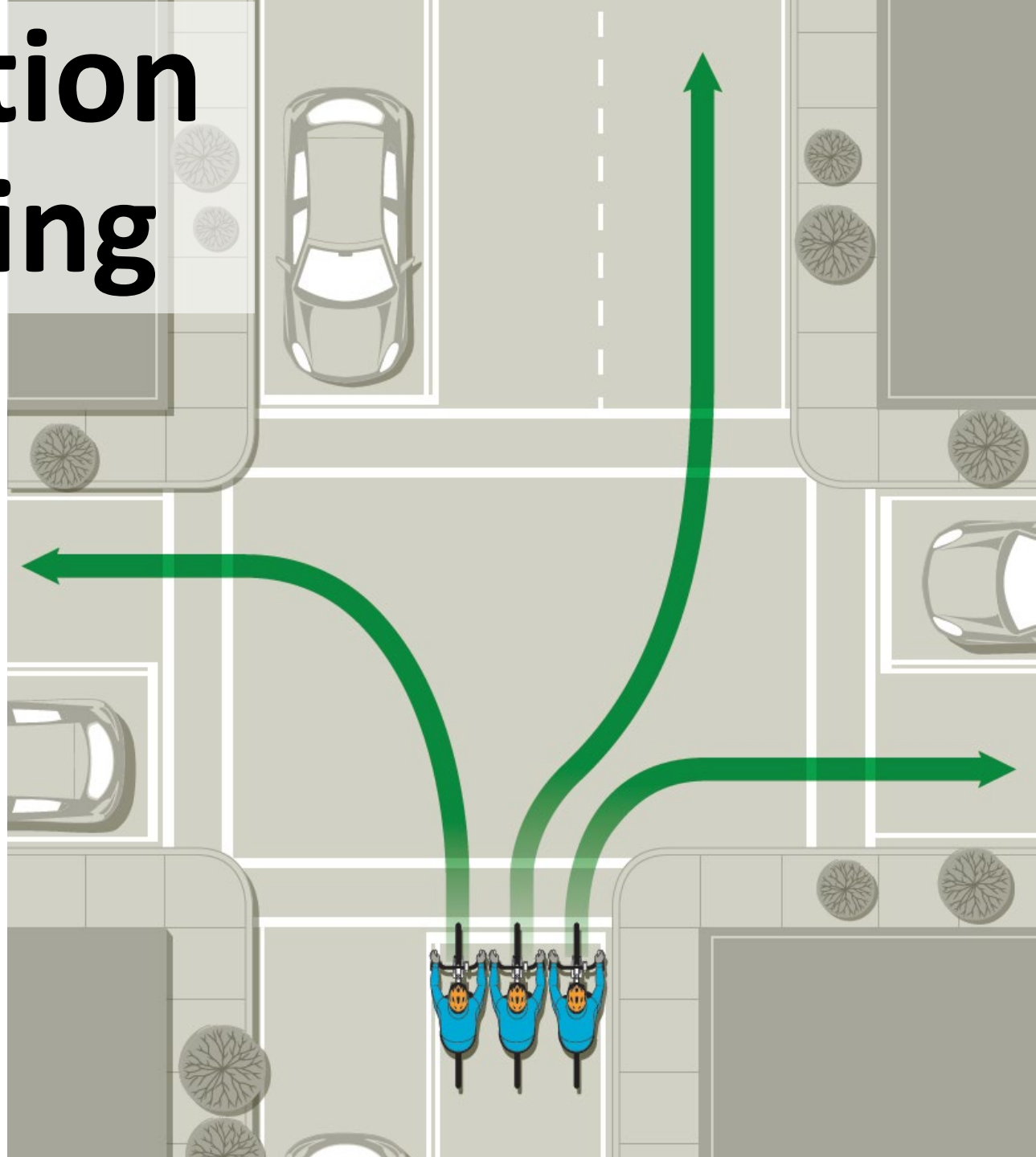
Where and How to Ride on Streets & Paths



Keep Right, Pass Left



Intersection positioning



Intersection positioning



Make sure you will not be passed on the left when making a left turn

**Rightmost lane
that serves your
destination**



How to Bike in Traffic

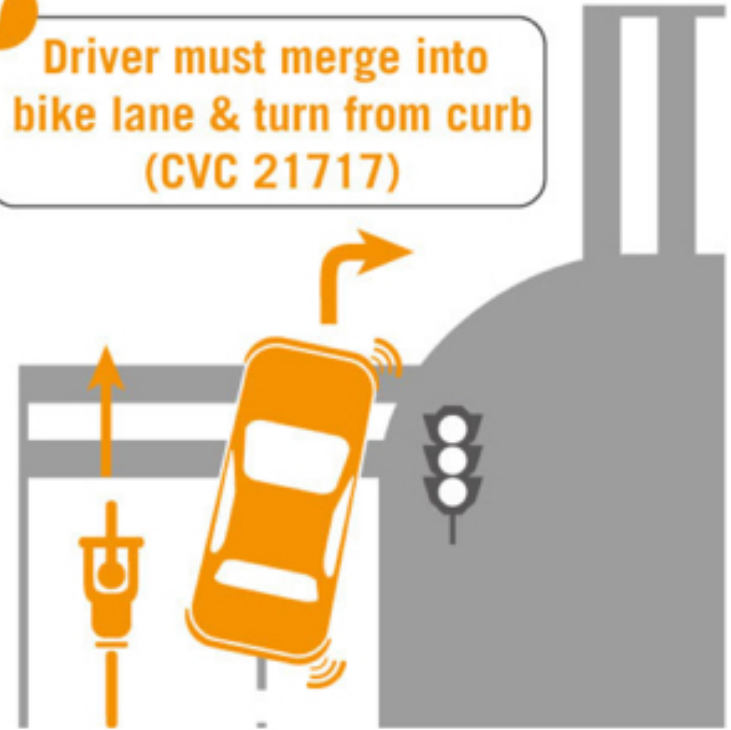
Wrong

! Driver is not turning from as far right as practicable (CVC 22100)



Correct

✓ Driver must merge into bike lane & turn from curb (CVC 21717)



Lane positioning



Do not get trapped on the right side of a car turning right

Q

WHAT IS A **BIKE BOX**?

A

It's a painted green space on the road with a white bicycle symbol inside.

The bike box creates space before the intersection so that people on bikes can cross the intersection *ahead* of traffic. This makes bikes more visible and predictable to approaching drivers.



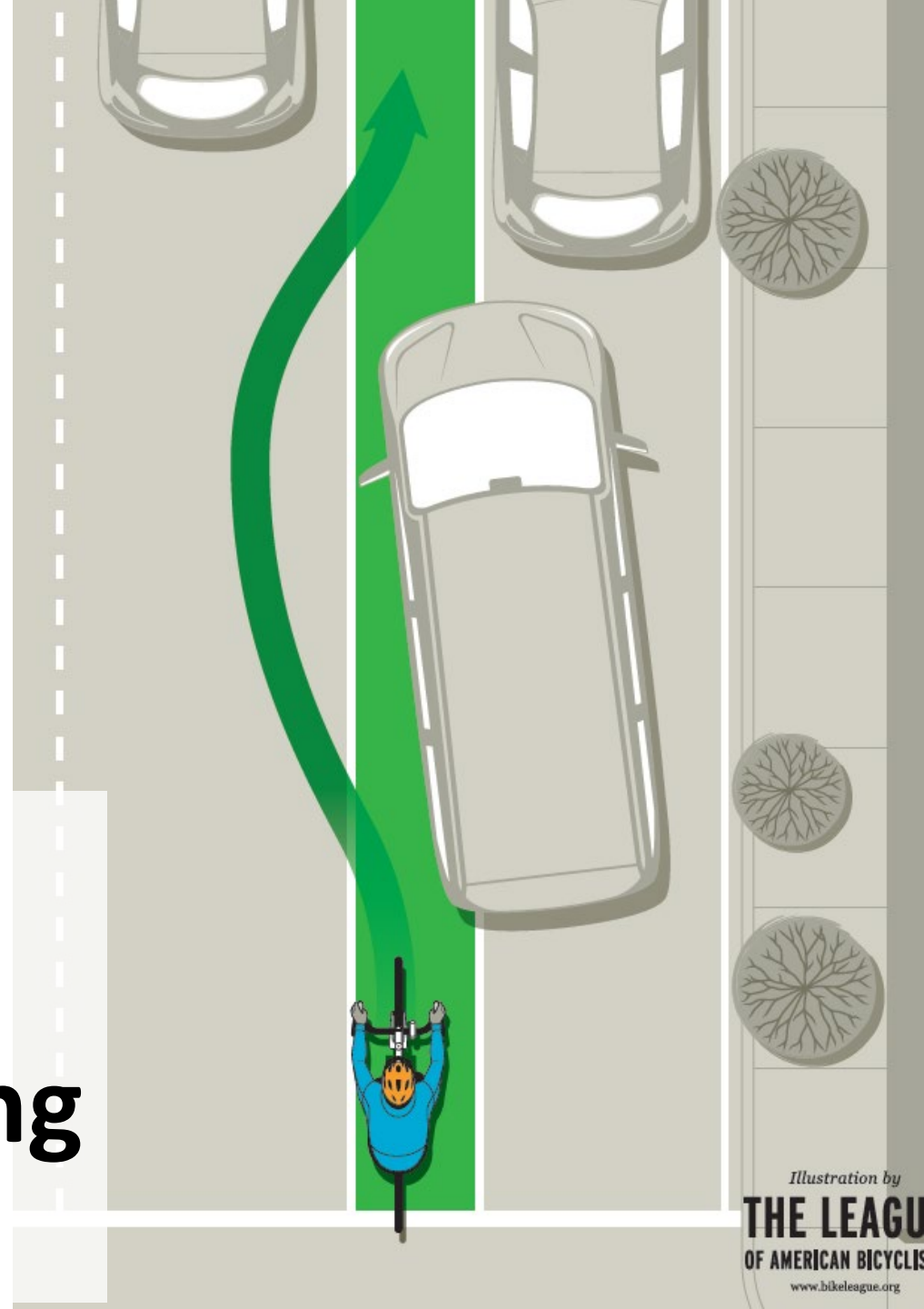
Be alert and aware



Watch for other road users crossing your path

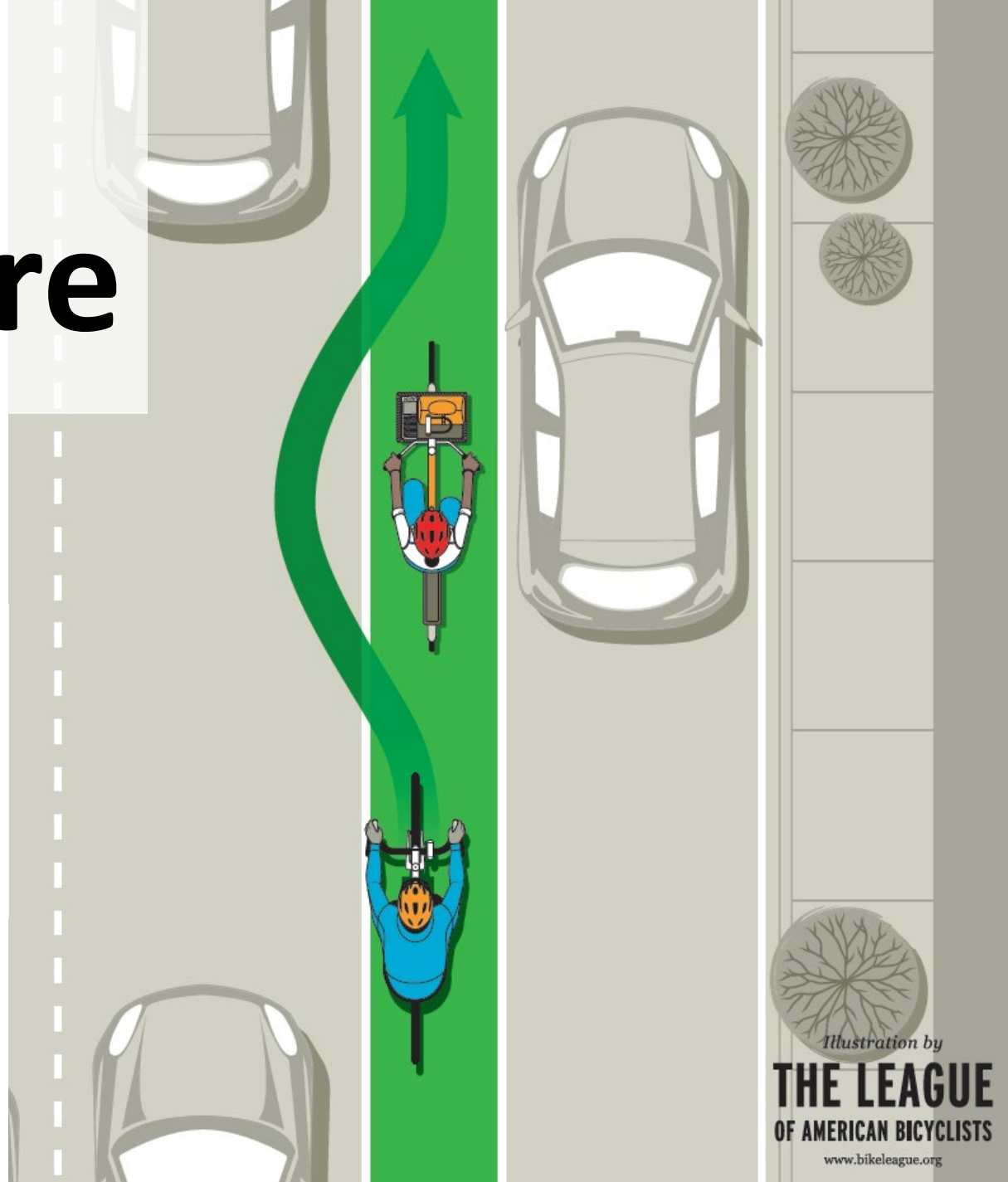
Be alert and aware

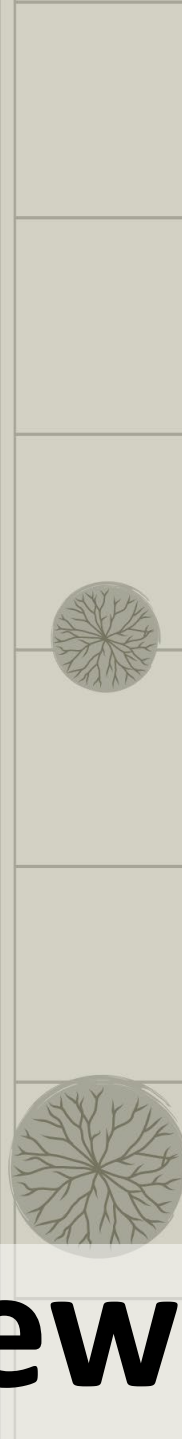
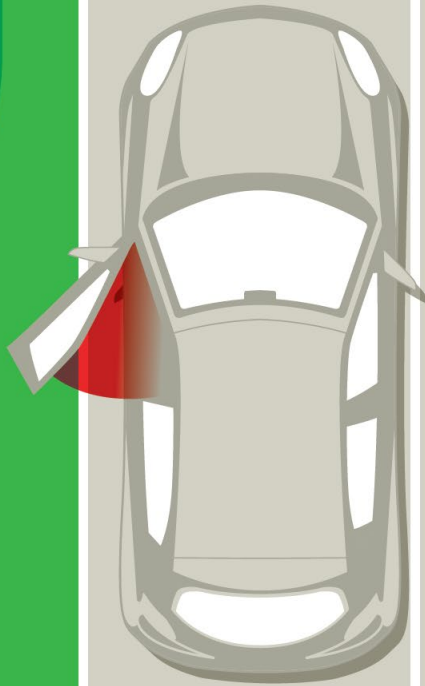
Look ahead and watch for obstacles blocking your path



Be alert and aware

Pass only when safe and clear



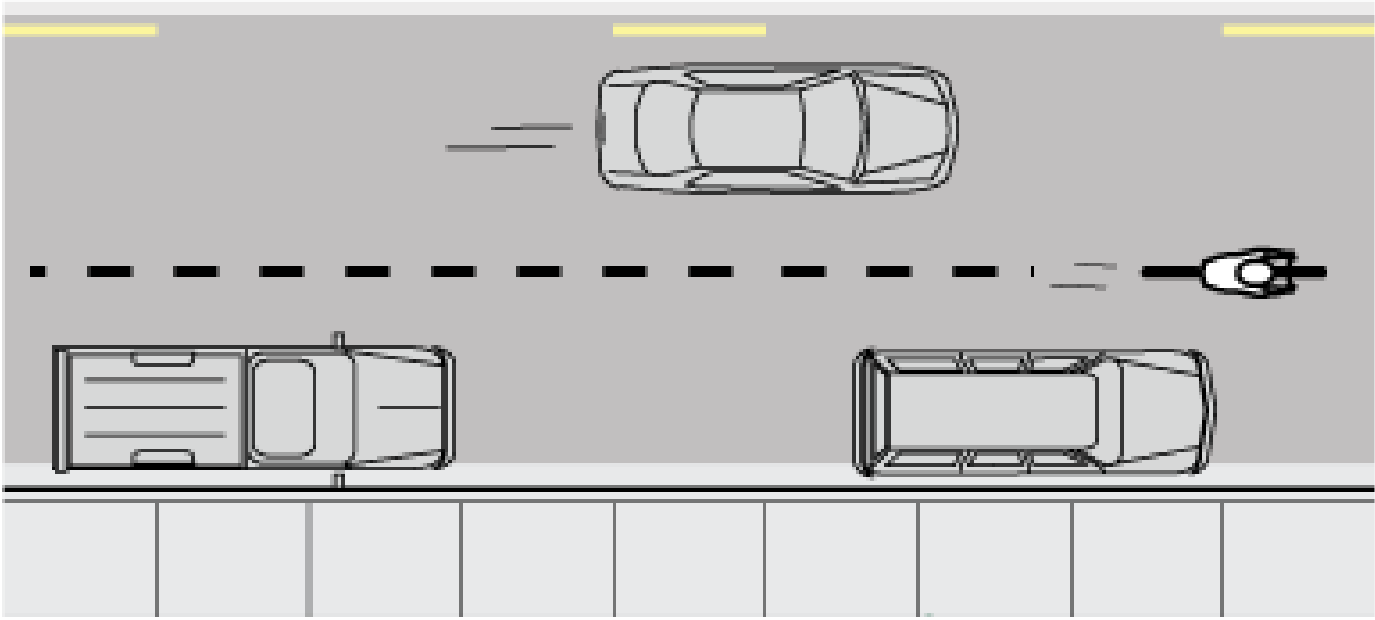


Beware car doors

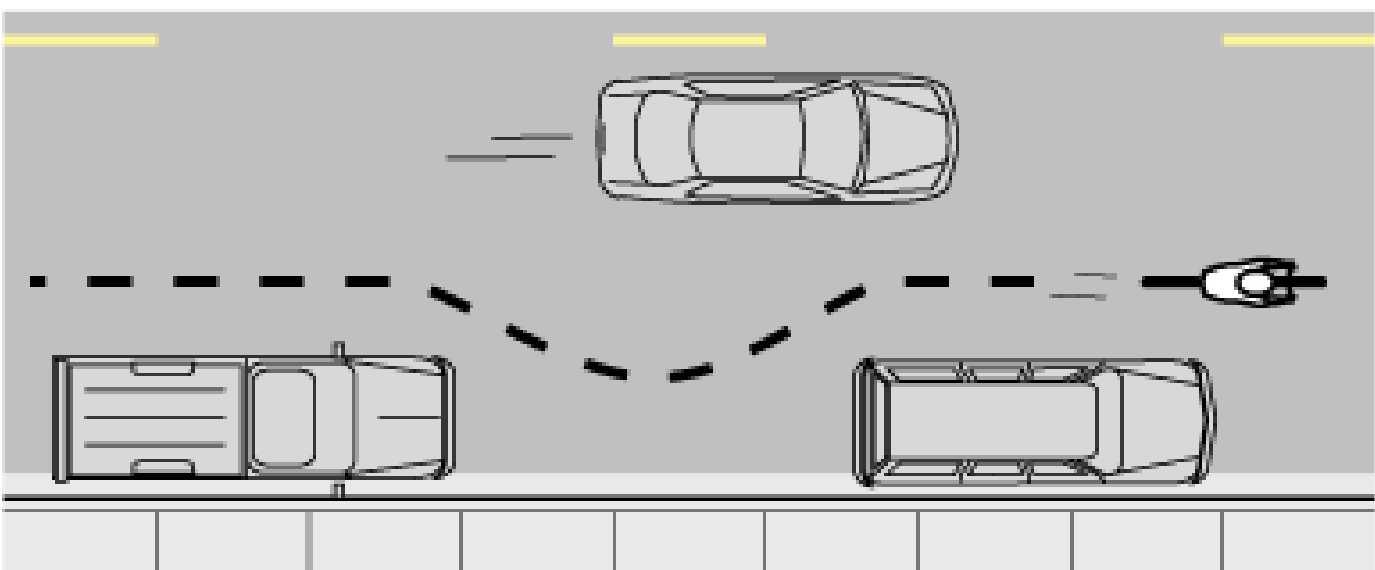
Avoid the “Door Zone”



Do not weave between parked cars



YES



NO

Stop at Stop signs



Follow signs



Look both ways when entering roadway

Follow traffic signals



Bicyclists must obey when present

Follow traffic signals



Must follow bicycle signals when present

Follow traffic signals



**Must follow bicycle signals
regardless of other signals**

Use pedestrian signal when crossing crosswalks





Look both ways, Keep right

Signal your intent



**Turning
Left**

**Turning
Right**

**Slowing/
Stopping**

**Turning
Right**

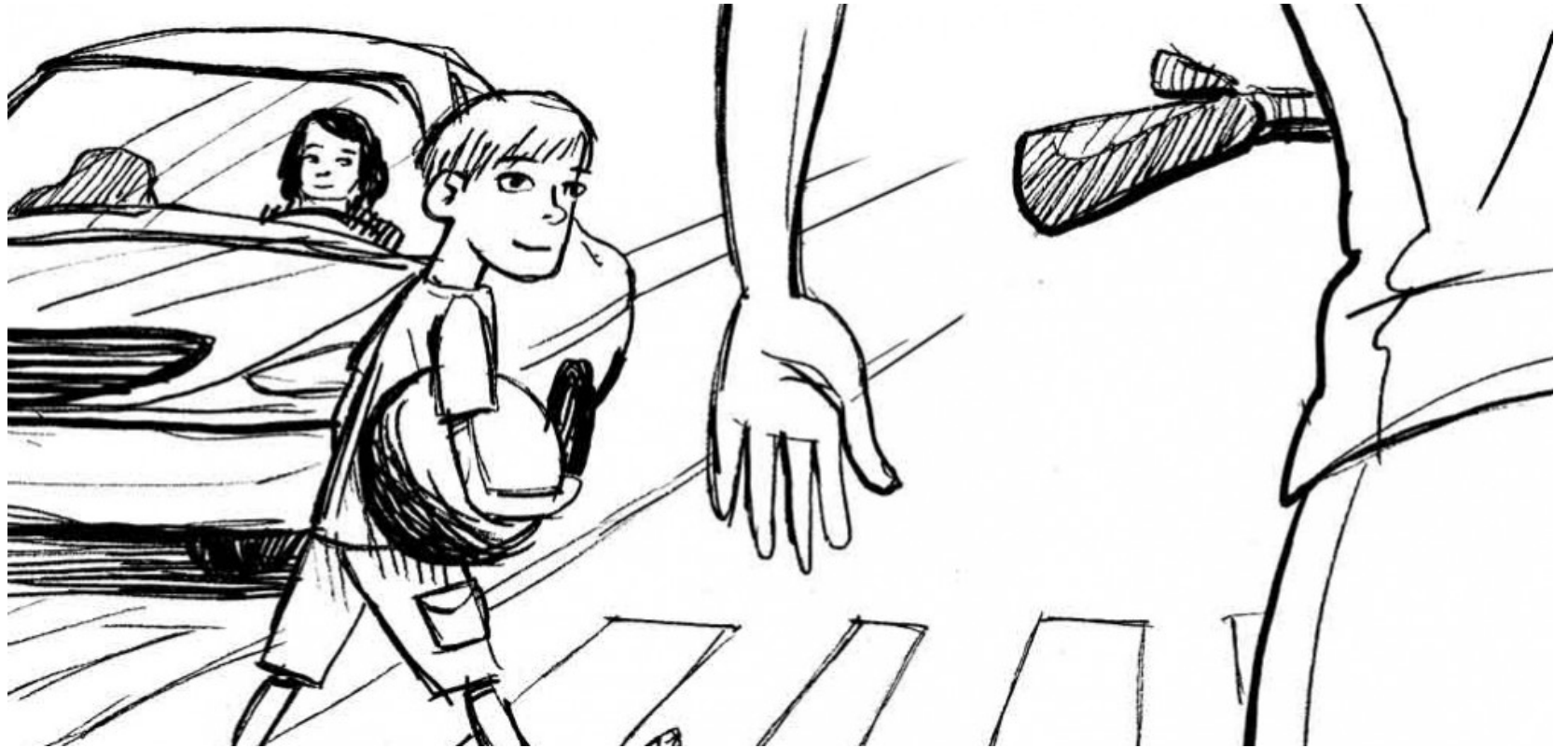
Illustration by
THE LEAGUE
OF AMERICAN BICYCLISTS
www.bikelogues.org

Signal your intent

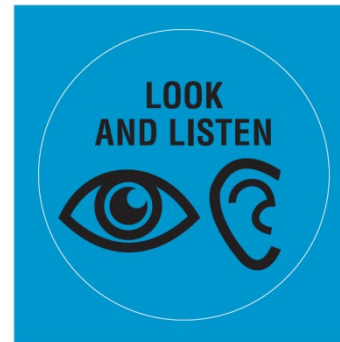


Turning Right

Yield to pedestrians



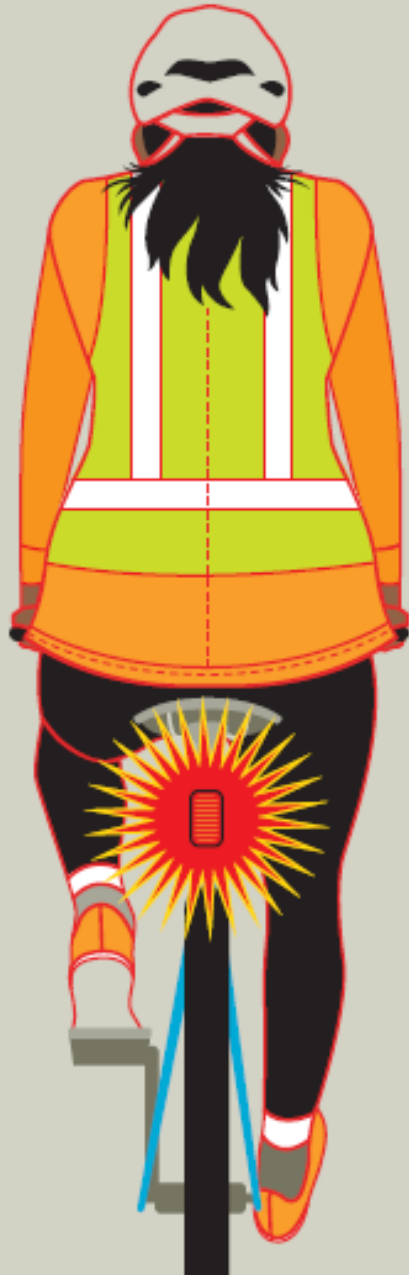
Pathway Etiquette



Be courteous to other pathway users



Be visible



Betabrand.com

**Reflectors help you be seen
in dark**



**Lights help you be seen
and help you see in the dark**





**Earbuds and headphones
may only cover one ear**

Thank you!

Instructors:

Jennifer Donofrio

City of Davis Bike and Pedestrian Coordinator

jdonofrio@cityofdavis.org

Joshua Endow-Monteiro

City of Davis Bike Education Coordinator

jendow@cityofdavis.org