

A photograph of the Davis Transit Depot entrance. In the foreground, a low, tan-colored wall with a concrete pillar on the right has the words "DAVIS TRANSIT DEPOT" in black, bold, sans-serif capital letters. Behind the wall, there are several large trees with autumn-colored leaves (yellows, oranges, and browns). To the left, a grey utility box is visible. In the background, a two-story peach-colored building with arched windows is labeled "DAVIS TOWER". A white SUV is parked in front of the tower. To the right, there are black trash bins, a street lamp, and a "NO PARKING" sign. The scene is set on a paved area with a sidewalk and a road.

**DAVIS TRANSIT DEPOT**

# **DAVIS AMTRAK STATION ACCESS AND CONNECTIONS STUDY**



# INTRODUCTIONS

Project Team

UC Davis Human Centered Design Students

Stakeholder Advisory Committee

- Roles and responsibilities

# STAKEHOLDER ADVISORY COMMITTEE MEETING

## Meeting Goals and Objectives

- Provide Project Overview
- Discuss existing conditions
- Discuss access opportunities and constraints
- Obtain input on user survey
- Next steps

# OVERVIEW OF THE STUDY

Funding source & study area

Identify opportunities to:

- Increase ridership
- Improve multimodal access
- Enhance station safety

Identify potential benefits

- Relieving congestion on local roadways
- Reducing regional vehicles miles traveled
- Stimulating economic development

# PROJECT AREA

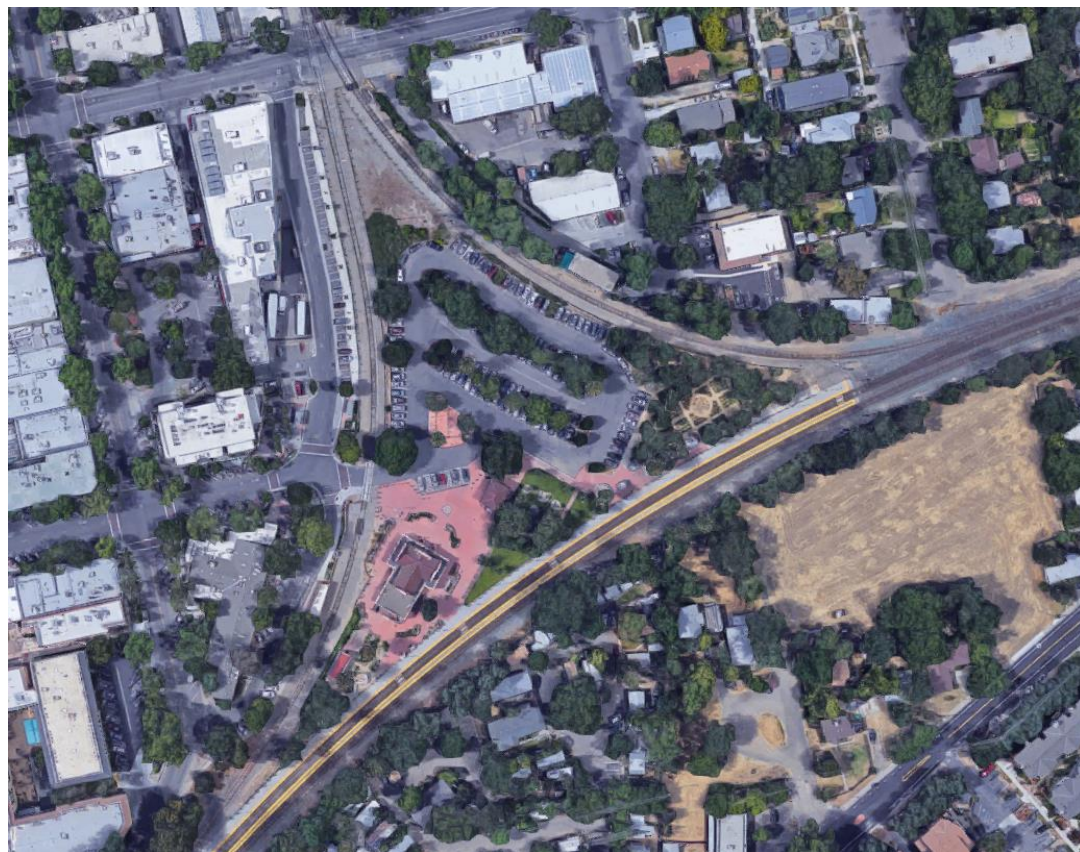


N:\2017 Projects\0596\_Davis\_Caltrans\_Planning\_Grant\_Assistant\Graphics\GIS\Site\_Location.ai

↔ Future Pedestrian and Bicycle Connections



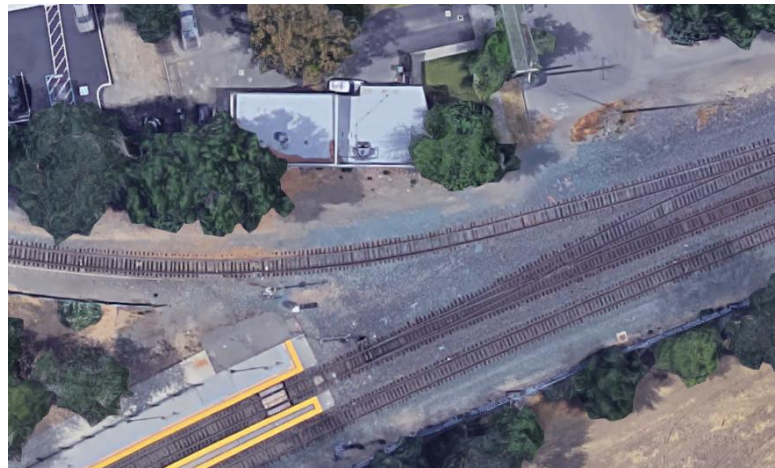
# PROJECT AREA



# SITE ACCESS



# SITE ACCESS

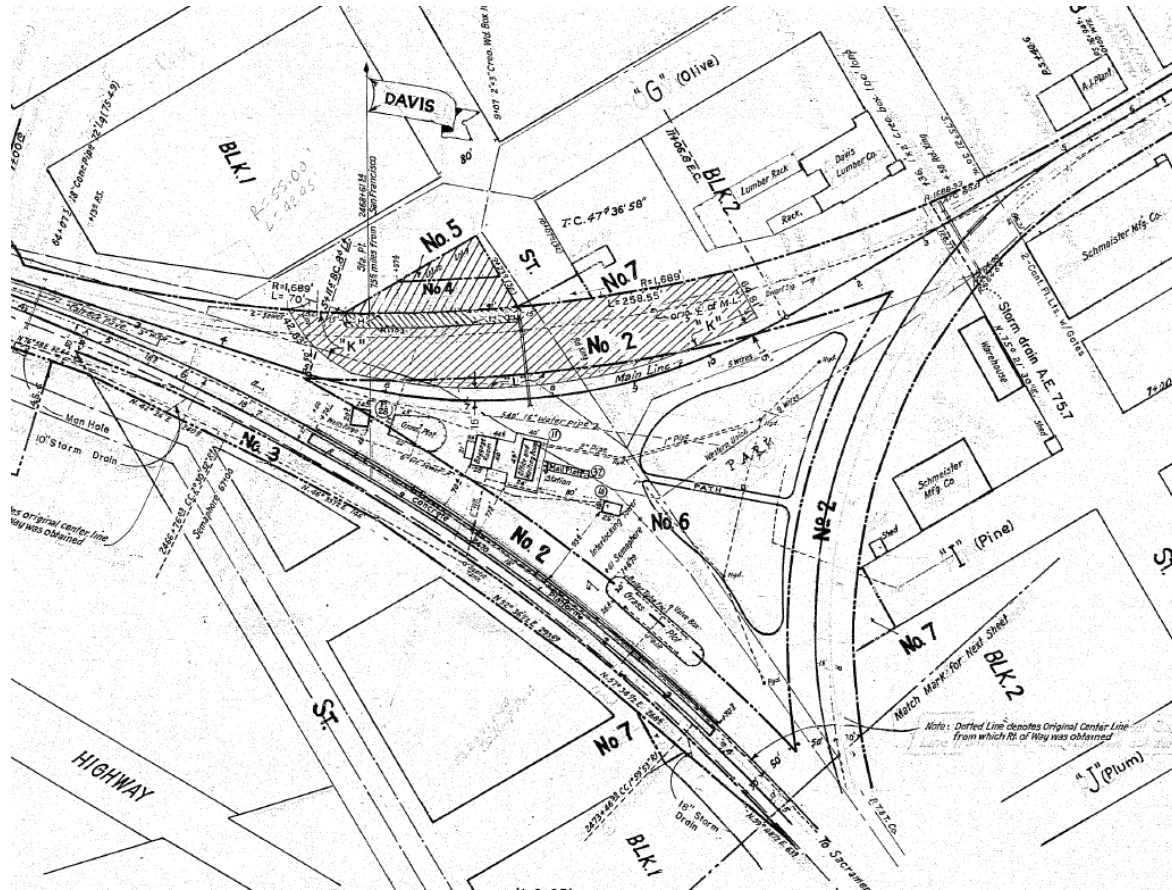




# TRANSIT ACCESS



# RIGHT OF WAY AND UTILITY CONSTRAINTS



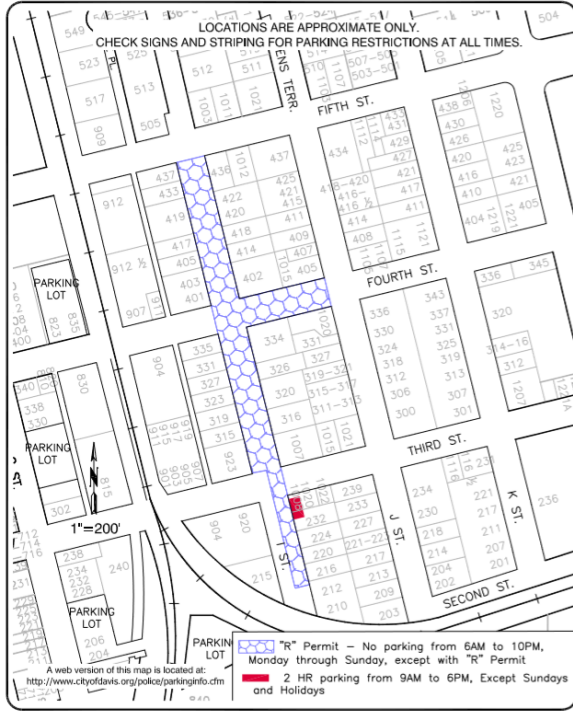
# AMTRAK DEPOT



# DEPOT PARKING

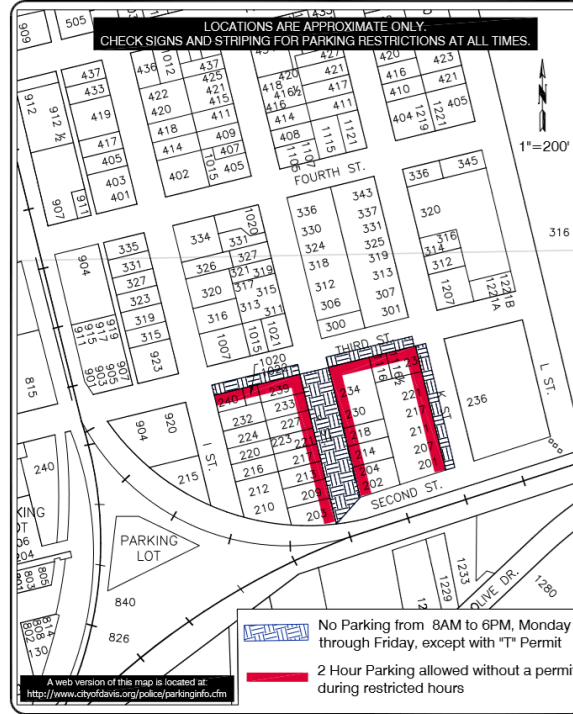


# NEIGHBORHOOD PARKING



"R" Preferential Parking Permit Area

CITY OF DAVIS  
PUBLIC WORKS DEPARTMENT  
As of November 2004



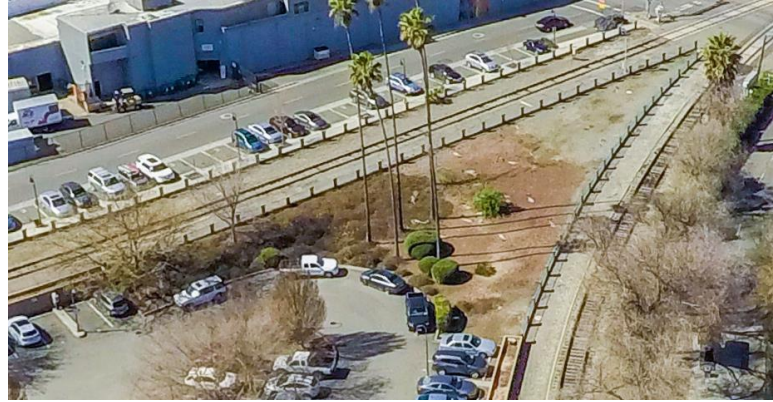
"T" Preferential Parking Permit Area

CITY OF DAVIS  
PUBLIC WORKS DEPARTMENT  
As of March 2007

# BIKE PARKING



# OPEN SPACES



# FUTURE OF TRANSPORTATION



Photo: UC Davis



Photo: JUMP by Uber





# USER SURVEY

1. When you visit the Davis Amtrak Station, what is the purpose of your trip?

- Business
- Pleasure - single day trip
- Pleasure - extended stay
- Other (please specify):

---

2. How often do you ride the Capitol Corridor?

- Daily
- At least once a week
- Once a month
- Few times a year
- Never, I'm at the station to:

---

# USER SURVEY

3. Where do you live?

---

4. What is the final destination on your trip?

---



# USER SURVEY

5. How do you typically access the Davis Amtrak Station?

- Park and ride
  - Taxi
  - Uber / Lyft
  - Drop-off
  - Amtrak Bus / Train
  - Local Bus
  - Regional Bus
  - Bike
  - Walk
  - Other
- 

6. What would improve your experience accessing the Davis Amtrak Station?

- Better bus service to the station
- Better informational and directional signs
- More direct pedestrian paths
- Clear drop-off and pick-up area (Taxi, Uber, Lyft, etc.)
- Additional bicycle parking
- Additional automobile parking
- More restrooms or services
- Other (please specify):



## USER SURVEY

7. The Davis Amtrak Station gets developed in the future. What type of uses would be ideal here?

- Residential
- Office space
- Retail
- Hotel
- Open space / public plaza
- Cultural amenities (e.g. museums, special exhibits)
- Other (please specify)\_\_\_\_\_

8. What activities would you wish to enjoy here in the future developed Davis Amtrak Station area?

- Public art
- Cafés, bars, and restaurants
- Bike valet or mechanic
- Leisure / entertainment (music / concerts /performance) activities in open space venues
- Other (please specify)\_\_\_\_\_

## NEXT STEPS

Next month: User Survey & Data collection

Summer: Public Workshop #1

Summer/Fall: Develop Recommendations

Fall/Winter: Public Workshop #2