

A photograph of the Davis Transit Depot. In the foreground, a tan-colored wall features the words "DAVIS TRANSIT DEPOT" in black, bold, sans-serif capital letters. Behind the wall, there are several large trees with autumn-colored leaves (yellows and oranges) and a white utility box. In the background, a two-story building with a sign that says "DAVIS TOWER" is visible. A white SUV is parked near the building, and there are black trash bins. The scene is set on a street corner with a sidewalk and a road.

DAVIS AMTRAK STATION ACCESS AND CONNECTIONS STUDY



STAKEHOLDER ADVISORY COMMITTEE MEETING

Meeting Goals and Objectives

- Provide Project Overview
- Discuss survey results
- Discuss site access data collection
- Discuss access opportunity concepts
- Next steps

OVERVIEW OF THE STUDY

Funding source & study area

Identify opportunities to:

- Increase ridership
- Improve multimodal access
- Enhance station safety

Identify potential benefits

- Relieving congestion on local roadways
- Reducing regional vehicles miles traveled
- Stimulating economic development

PROJECT AREA



N:\2017 Projects\0566_Davis_Catrans_Planning_Grant_Assistants\Graphics\USfile_Location.ai

↔ Future Pedestrian and Bicycle Connections



PROJECT AREA



SITE ACCESS



PARKING DATA

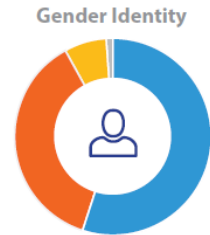
- 145 existing parking spaces
- 75% of depot parkers are local
- Lot fills by 6:30am



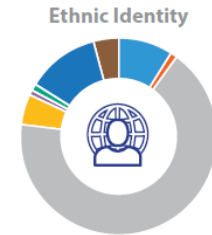
USER SURVEY RESULTS

Almost 1200 responses to online survey

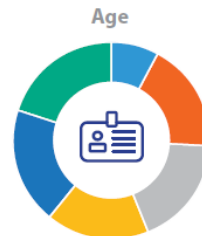
- Diversity of age
- 1/3 regular station users



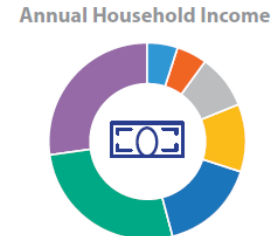
Female Male
Prefer Not to Say Other



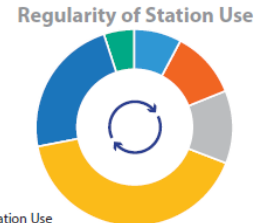
Asian Black/African Caucasian
Hispanic/Latinx Native American Pacific Islander
Prefer Not to Say Other



18 - 24 25 - 34
35 - 44 45 - 54
55 - 64 65+



Under \$15K \$15K-29K \$30K-49K
\$50K-74K \$75K-99K \$100K-150K
Over \$150K

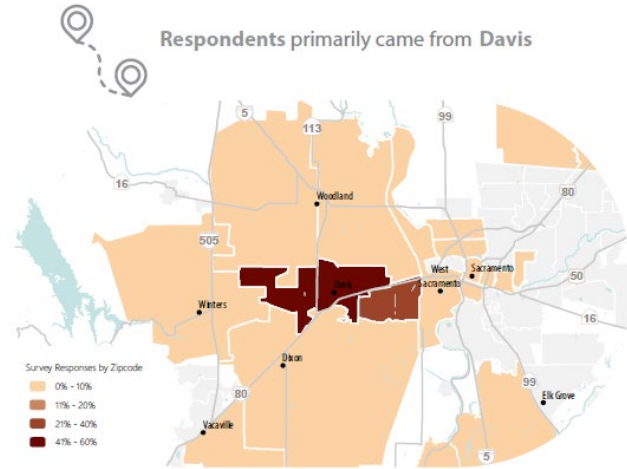


5+ Days of Station Use 2-4 Days Per Week Weekly Monthly
Yearly Never

USER SURVEY RESULTS

Variety of users

- Train riders
- Downtown visitors
- Station visitors



34% of regular users are typically at the station with a **friend, colleague, or family member**



70% of regular users spend **5-30 Minutes** at a time at the station



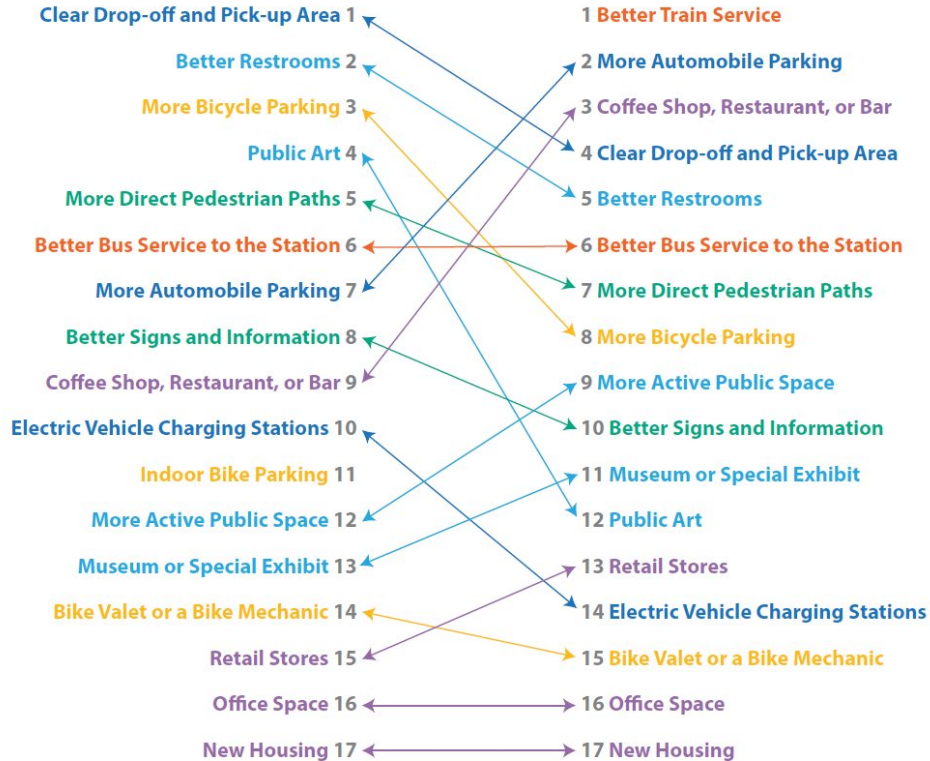
15% of regular users visit the station to enjoy its **public spaces**

USER SURVEY RESULTS

Regular Station Users ranked their level of support for the following improvements:



Irregular and Non Station Users said the following improvements would encourage them to use the station:



UC DAVIS STUDENT PROJECT

UC Davis Human Centered Design Students

Our Point of View & User

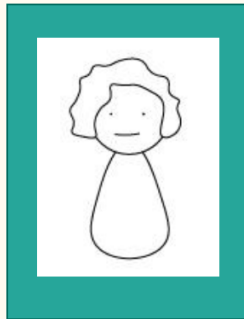
Characteristics

Woman in her mid 60s

Sociable and easygoing

Relies on Amtrak & others for transportation

Theresa



Key Elements

Amtrak was a place of gathering

It was a symbol of the community

She lost her sense of attachment to Amtrak

NEAR TERM IMPROVEMENTS

TRAIN STATION CAFE



INFORMATIONAL AND WAYFINDING SIGNS



IMPROVED RESTROOMS



cta bus tracker estimated arrivals

Broadway & Argyle

| | | |
|-----|--------------------------------|--------|
| #36 | North to Devon/Clark | Due |
| #36 | North to Devon/Clark | 9 min |
| #36 | South to LaSalle Metra Station | 15 min |
| #36 | South to LaSalle Metra Station | 15 min |
| #36 | South to LaSalle Metra Station | 23 min |
| #36 | North to Devon/Clark | 25 min |

1:33 pm
Saturday
March 23

ctabustracker.com

NEAR TERM IMPROVEMENTS

Art or educational exhibits

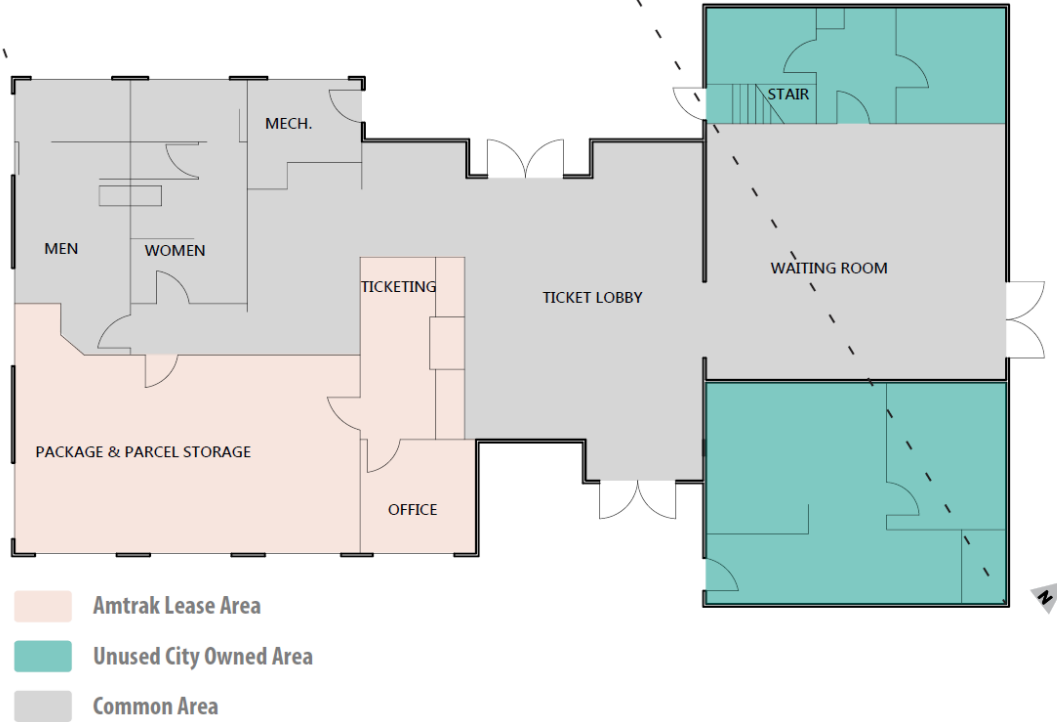


NEAR TERM IMPROVEMENTS

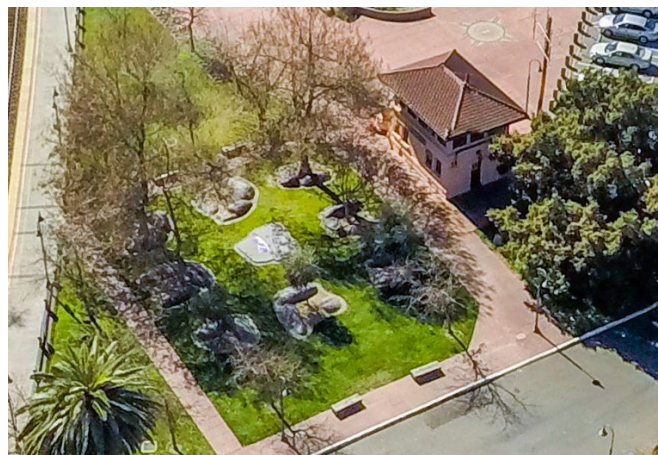
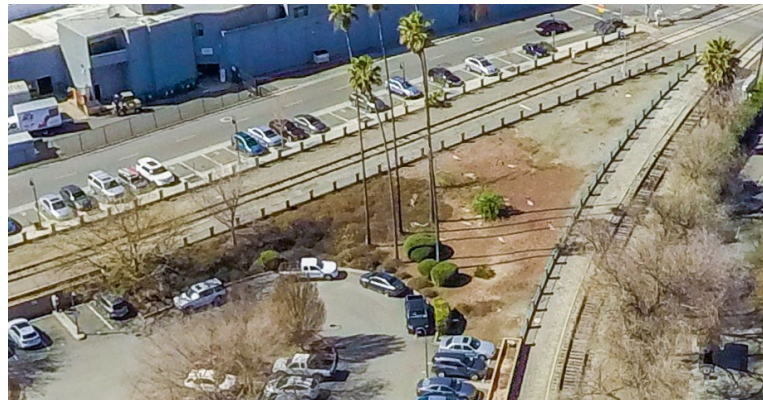
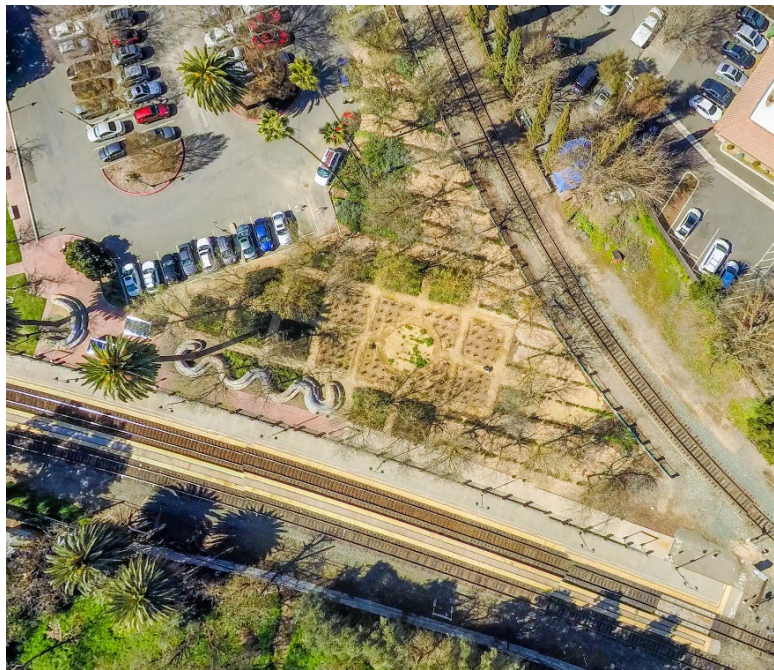
Secure indoor
secure bicycle
storage



EXISTING DEPOT BUILDING



OPEN SPACES

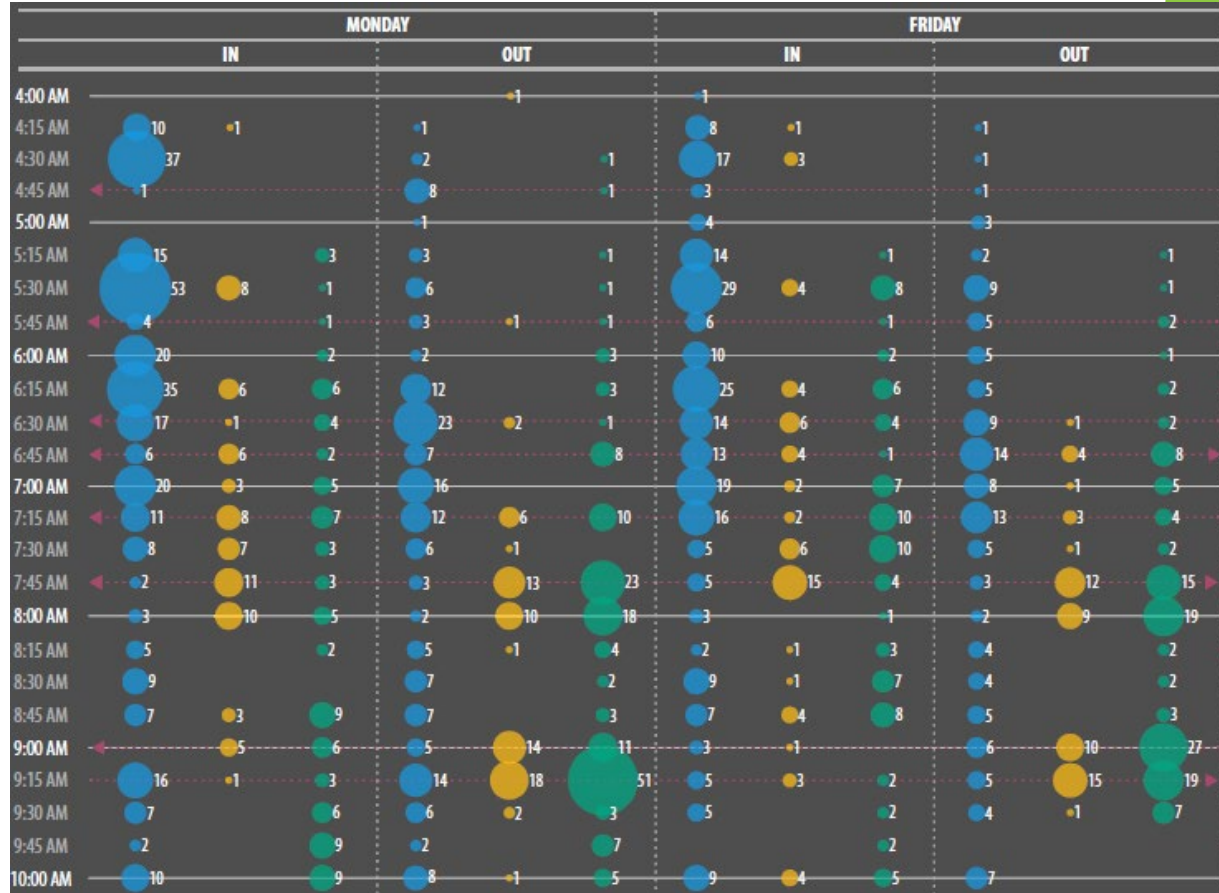
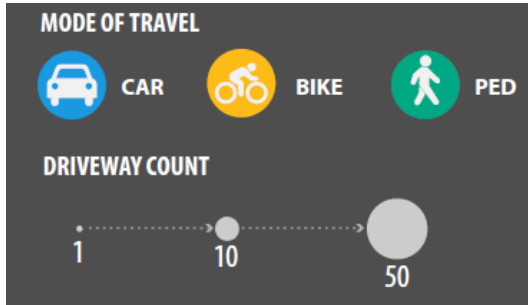


STATION ACCESS



- 40 Driveway Count
- Informal Crossings (Bike/Ped)
- Car
- Bike
- Ped

STATION ACCESS





PLANNED CONNECTIONS

DAVIS AMTRAK PLANNED CONNECTIONS



NEAR TERM ACCESS IMPROVEMENTS

Expand and improve curbside interface along H Street



AMTRAK BUS STATION IMPROVEMENTS

Potential enhancements

- All weather shelter
- Lighting
- Bus / rail information
- Connection to Depot



STRUCTURED PARKING

- 100 spaces per floor
- \$5 million per floor
- Two points of access
- Fire access around the building



MIXED-USE WITH PARKING



NEXT STEPS

- Exploring additional access points to station with Union Pacific
- Housing analysis for transit oriented development
- Site development scenarios
- Future mobility
- Commissions & committees
- Public workshop
- Draft study end of January

DEPOT PARKING

