



On November 6, 2019, the City of Davis held the second Stakeholder Advisory Committee (SAC) meeting for the Davis Amtrak Station Access and Connections Study. The meeting took place from 2:30 – 4:00 p.m. at the Veterans Memorial Center, located 203 East 14th Street in Davis.

The following project team members attended the meeting:

City of Davis
Ginger Hashimoto
Tracie Reynolds

Fehr and Peers
Adrian Engel
Cheryl Croshere

AIM Consulting
Nicole Zhi Ling Porter
Elise Brockett

Eleven stakeholder representatives participated in the meeting, representing the following organizations:

- Capital Corridor Joint Powers Authority
- Lyft
- Old East Davis Neighborhood Association
- Olive Drive
- Unitrans
- University of California, Davis
- Visit Yolo County
- Yolo County Transportation District

The meeting objectives included:

- To provide an update on the Davis Amtrak Station Access and Connections Study’s outreach efforts,
- Outline the study process and schedule,
- Present key findings from the online survey,
- Discuss opportunities and constraints related to enhancing access to the Amtrak depot and long-range site improvements, and
- To obtain input on station layout and amenities.



The project team presents to stakeholders

Project Overview

The Davis Amtrak Station Access and Connections Study will identify long-range opportunities to increase ridership on Amtrak, improve multimodal accessibility, and enhance station safety in Davis. In addition, the study will examine the potential benefits of implementing such changes including relieving congestion on local roadways, reducing vehicle miles traveled, and stimulating economic activity in downtown Davis. The study is funded by a Caltrans planning grant.



Stakeholder representatives discuss the study

Meeting Format

The Stakeholder Advisory Committee (SAC) meeting began with Ginger Hashimoto from the City of Davis, welcoming Stakeholders and giving introductions to the project team. Next, Adrian Engel of Fehr & Peers gave an overview of the meeting format and encouraged stakeholders to use the feedback form. Adrian began the presentation by giving an overview of the project and outreach done to date. Cheryl Croshere of Fehr & Peers continued by presenting the results of the online user survey that happened in June of 2019. Adrian continued the presentation with breaks for stakeholder representatives to provide feedback. The project team concluded the meeting by thanking stakeholder for attending and for providing feedback.

Stakeholder Discussion

Below is an overview of the stakeholder discussion. Comments have been sorted by topic.

Potential Improvements

- It seems like improving the wayfinding for visitors to the station could eliminate the need for building a café or restaurant.
- Have you looked into making the 2nd Street / H Street intersection a roundabout?
- Will we be discussing a potential overpass to the station from surrounding neighborhoods?
- The benches at the bottom right of the station near the rose garden are used by people drinking in public and illegal dumping. They are out of sight from the general public and the street.

ACCESS & CONNECTIONS STUDY



- Is there a history of bike and pedestrian accidents that happen at the 2nd and H Street intersection?
- The informational tracking signs are highly needed for the platforms.

Station Building

- Visitors cannot see the train platform from the station building and there are no informational signs about arrival inside the station building, so it is hard for people to tell when the train is coming.
- In the survey, was there an evaluation of how the waiting room space is used? It is usually empty and underutilized.



Stakeholder representative provides feedback on the survey response

Bike Parking

- Did the people commenting on the bicycle lockers during the user survey know about the already existing lockers at the Amtrak Station site?

Bus Considerations

- Would it be feasible to have designated bus or transit lanes?
- Yolo County Transportation District doesn't have a direct service to the station, mostly because of timing. There has been some demand for service, specifically from Woodland. Some anecdotal requests, but there have been some time constraints and us evaluating the benefits and the challenges. The inter-city buses would be competing with the trains.
- Unitrans buses have a lot of challenges, specifically at 3rd and H Street intersection (specifically buses turning left onto H and northbound H turning onto 3rd street). If these challenges continue, Unitrans won't service the station anymore.
- There needs to be a way to improve the turn at H and 3rd Street without inconveniencing riders.
- Is there a fence behind the bus drop-off building?

Transit Considerations

- Lyft is hoping to have a "venue" or area dedicated to picking up and dropping off for people using the Lyft app. Lyft would want to see data of where people are being pick up and dropped off at.
- Amtrak is considering building an undercrossing with ADA funding.
- Davis Amtrak Station is the second busiest station after the Sacramento Valley Station.

ACCESS & CONNECTIONS STUDY



- Capital Corridor has an app with arrival time and real-time information. Information signs at the station promoting the Capital Corridor app would be helpful.

Parking

- Has there been any talk of building a parking structure at Lincoln 40? It seems more feasible, and a lot of community members have been asking for it.



Stakeholders wait for the meeting to begin

Other

- Are there any other stations that exist in the nation that have a similar situation to the Davis Amtrak Station that could be used as a model for development?
- What is the time frame for the project?
- I really like the presentation and board displays.
- The undercrossing would be constrained by space if there were to be a parking structure built.
- If you are new to the station, it's easy for visitors to accidentally get on the wrong train.
- It would be best to take out the middle platform at the train station. There is an example of this at the Santa Clara station (undercrossing). Make the undercrossing connect to J Street to allow for bicyclists to use.



Stakeholder representative presents potential changes to the station



Appendix

- Meeting invite
- Presentation
- Meeting agenda
- Feedback form

Dear Community Member:

On behalf of City Manager Mike Webb, I am writing to invite you to the second Stakeholder Advisory Committee meeting for the City's Amtrak Station Access and Connections Study.

The project team will present an overview of community input from a series of pop-up workshops and an online survey. We also will review and discuss ideas for the depot site.

The meeting will take place on **Wednesday, November 6 from 2:30 to 4 p.m.** at the **Veterans Memorial Center Club Room, located at 203 E 14th Street in Davis.**

Please confirm your organization's participation by contacting Katie Durham at kdurham@aimconsultingco.com or (916) 442-1168 **no later than Wednesday, October 30.**

Funded by a Caltrans planning grant, this study seeks to identify long-range opportunities to increase ridership, improve multimodal accessibility, and enhance station safety. In addition, the study will examine the potential benefits of implementing such changes including relieving congestion on local roadways, reducing vehicle miles travelled, and stimulating economic activity downtown.

Please feel free to contact me at gashimoto@cityofdavis.org or (530) 747-5809 if you have any questions or would like additional information.

Thank you in advance for your consideration.

Ginger Hashimoto

A photograph of the Davis Transit Depot. In the foreground, a tan wall features the words "DAVIS TRANSIT DEPOT" in black, bold, sans-serif capital letters. Behind the wall, a two-story building with a sign that reads "DAVIS TOWER" is visible. The scene is surrounded by large trees with autumn-colored leaves, a white SUV, and a utility box. A street with a crosswalk and a "NO PARKING" sign is in the background.

DAVIS TRANSIT DEPOT

DAVIS AMTRAK STATION ACCESS AND CONNECTIONS STUDY



STAKEHOLDER ADVISORY COMMITTEE MEETING

Meeting Goals and Objectives

- Provide Project Overview
- Discuss survey results
- Discuss site access data collection
- Discuss access opportunity concepts
- Next steps

OVERVIEW OF THE STUDY

Funding source & study area

Identify opportunities to:

- Increase ridership
- Improve multimodal access
- Enhance station safety

Identify potential benefits

- Relieving congestion on local roadways
- Reducing regional vehicles miles traveled
- Stimulating economic development

PROJECT AREA

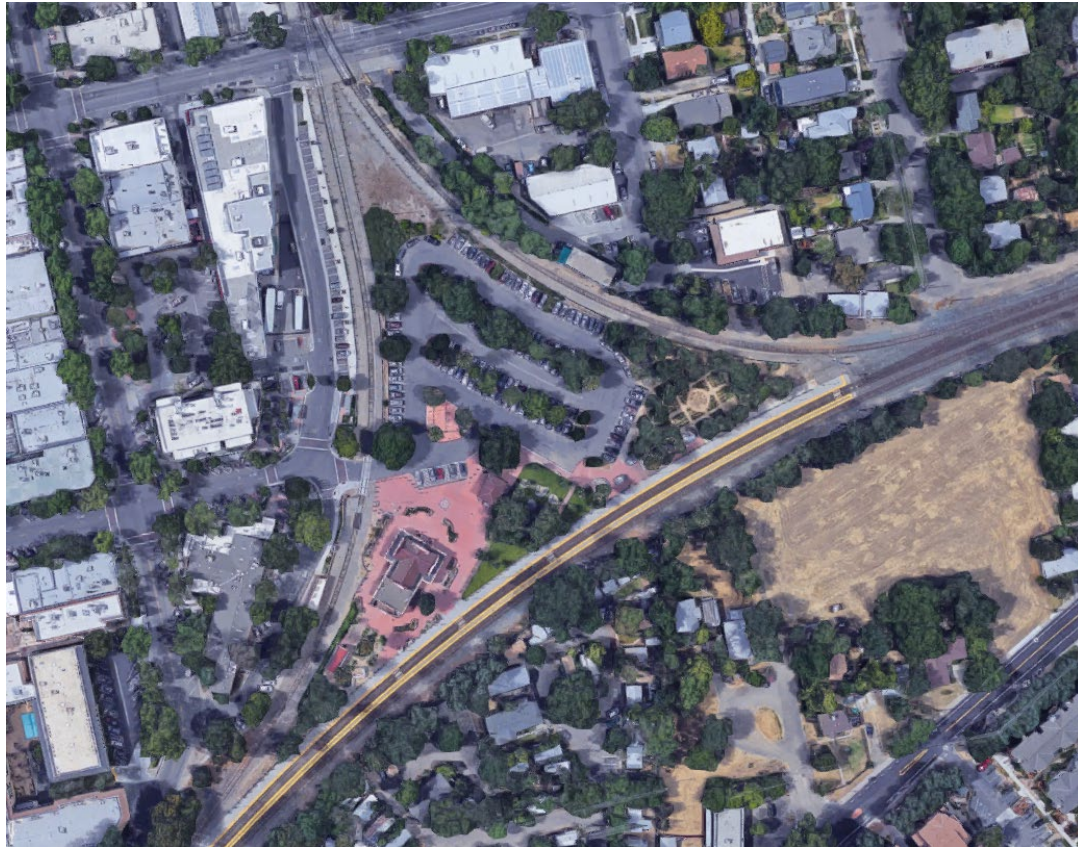


N:\2017 Projects\0566_Davis_Catrans_Planning_Grant_Assistants\Graphics\USite_Location.ai

↔ Future Pedestrian and Bicycle Connections



PROJECT AREA



SITE ACCESS



PARKING DATA

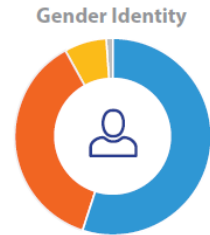
- 145 existing parking spaces
- 75% of depot parkers are local
- Lot fills by 6:30am



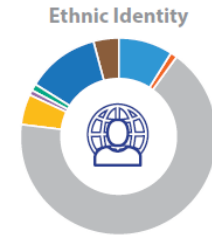
USER SURVEY RESULTS

Almost 1200 responses to online survey

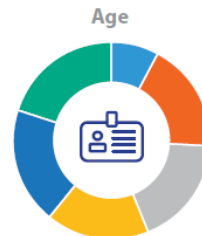
- Diversity of age
- 1/3 regular station users



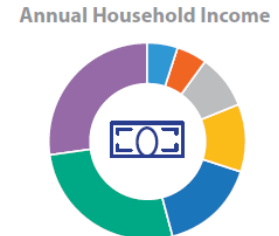
Female Male
Prefer Not to Say Other



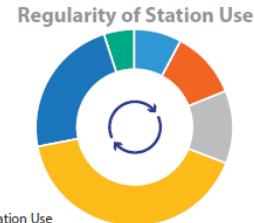
Asian Black/African Caucasian
Hispanic/Latinx Native American Pacific Islander
Prefer Not to Say Other



18 - 24 25 - 34
35 - 44 45 - 54
55 - 64 65+



Under \$15K \$15K-29K \$30K-49K
\$50K-74K \$75K-99K
\$100K-150K Over \$150K

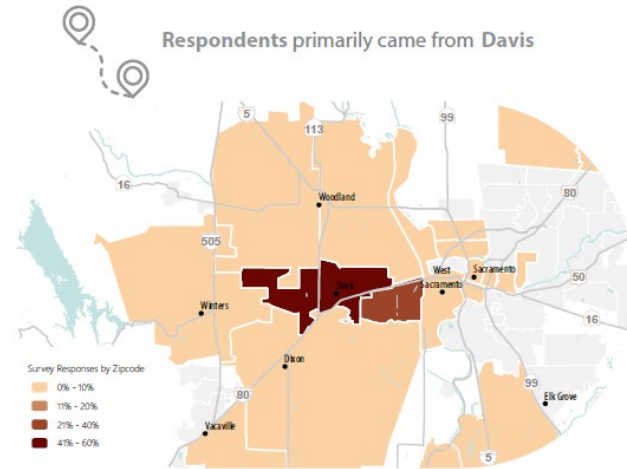


5+ Days of Station Use Yearly
2-4 Days Per Week Weekly
Monthly Never

USER SURVEY RESULTS

Variety of users

- Train riders
- Downtown visitors
- Station visitors



34% of regular users are typically at the station with a **friend, colleague, or family member**



70% of regular users spend **5-30 Minutes** at a time at the station



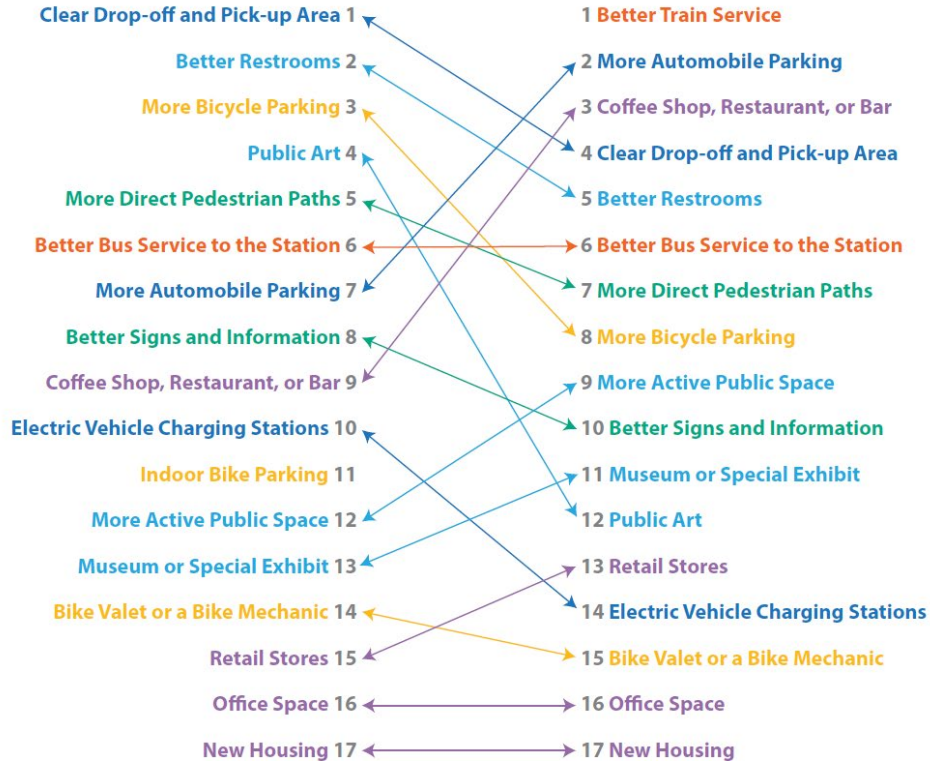
15% of regular users visit the station to enjoy its **public spaces**

USER SURVEY RESULTS

Regular Station Users ranked their level of support for the following improvements:



Irregular and Non Station Users said the following improvements would encourage them to use the station:



UC DAVIS STUDENT PROJECT

UC Davis Human Centered Design Students

Our Point of View & User

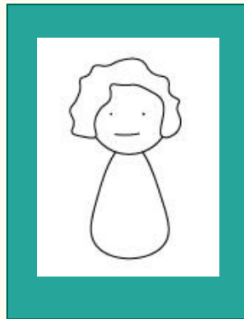
Characteristics

Woman in
her mid 60s

Sociable and
easygoing

Relies on
Amtrak & others for
transportation

Theresa



Key Elements

Amtrak was a place
of gathering

It was a symbol of
the community

She lost her sense of
attachment to
Amtrak

NEAR TERM IMPROVEMENTS

TRAIN STATION CAFE



INFORMATIONAL AND WAYFINDING SIGNS



IMPROVED RESTROOMS



cta bus tracker estimated arrivals

Broadway & Argyle

#36	North to Devon/Clark	Due
#36	North to Devon/Clark	9 min
#36	South to LaSalle Metra Station	15 min
#36	South to LaSalle Metra Station	15 min
#36	South to LaSalle Metra Station	23 min
#36	North to Devon/Clark	25 min

1:33 pm
Saturday
March 23

ctabustracker.com

NEAR TERM IMPROVEMENTS

Art or educational exhibits

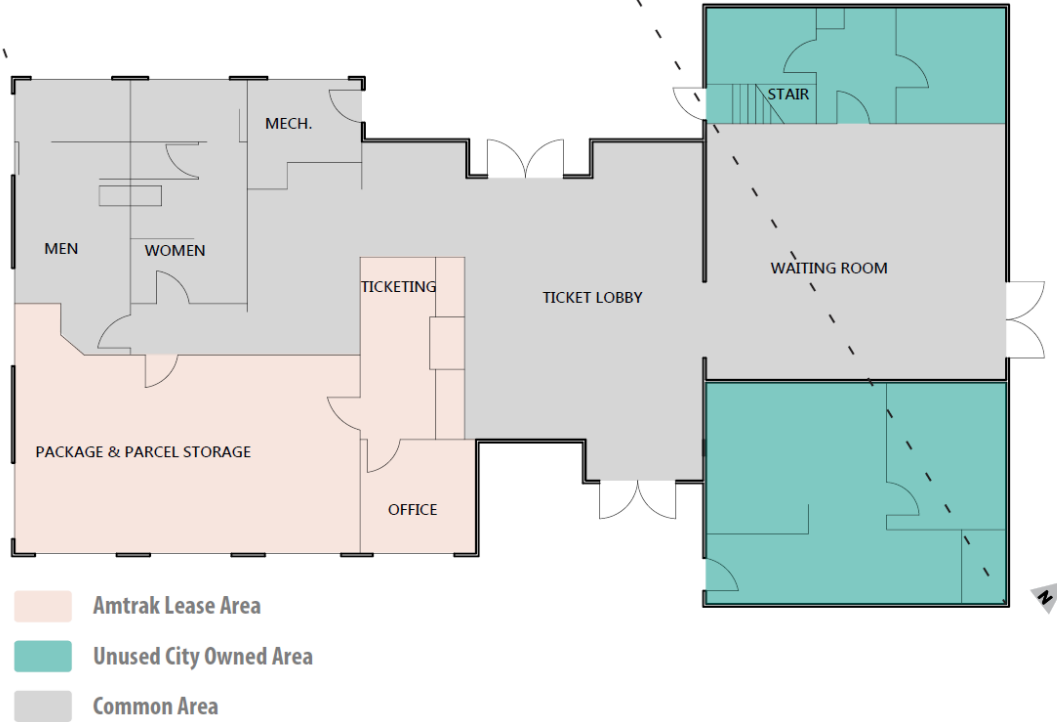


NEAR TERM IMPROVEMENTS

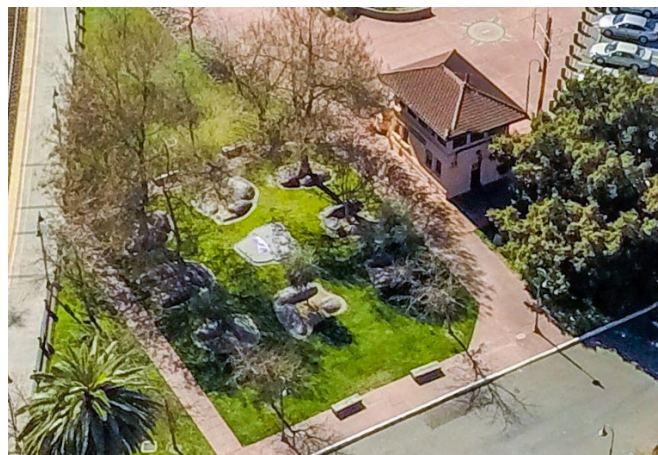
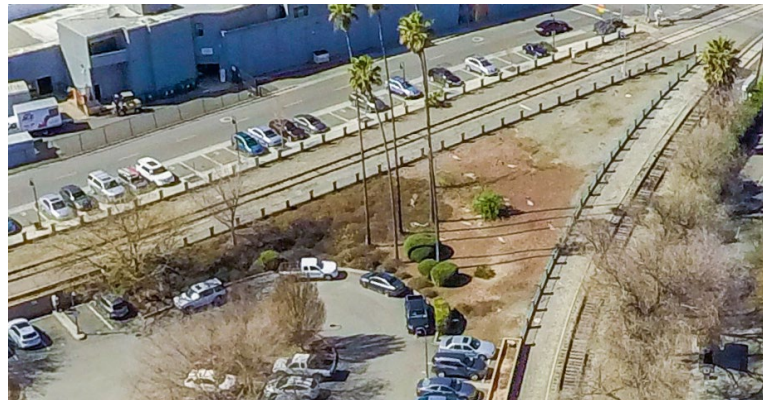
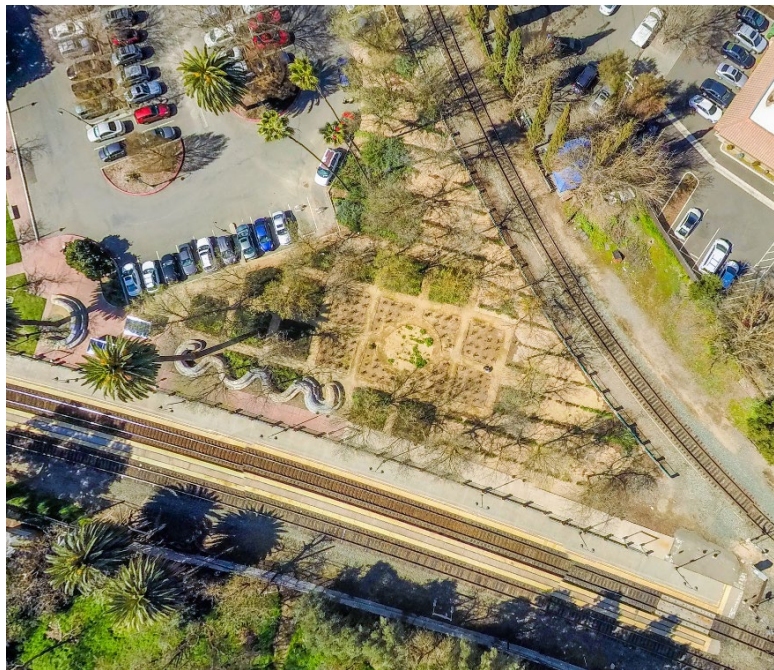
Secure indoor
secure bicycle
storage



EXISTING DEPOT BUILDING



OPEN SPACES

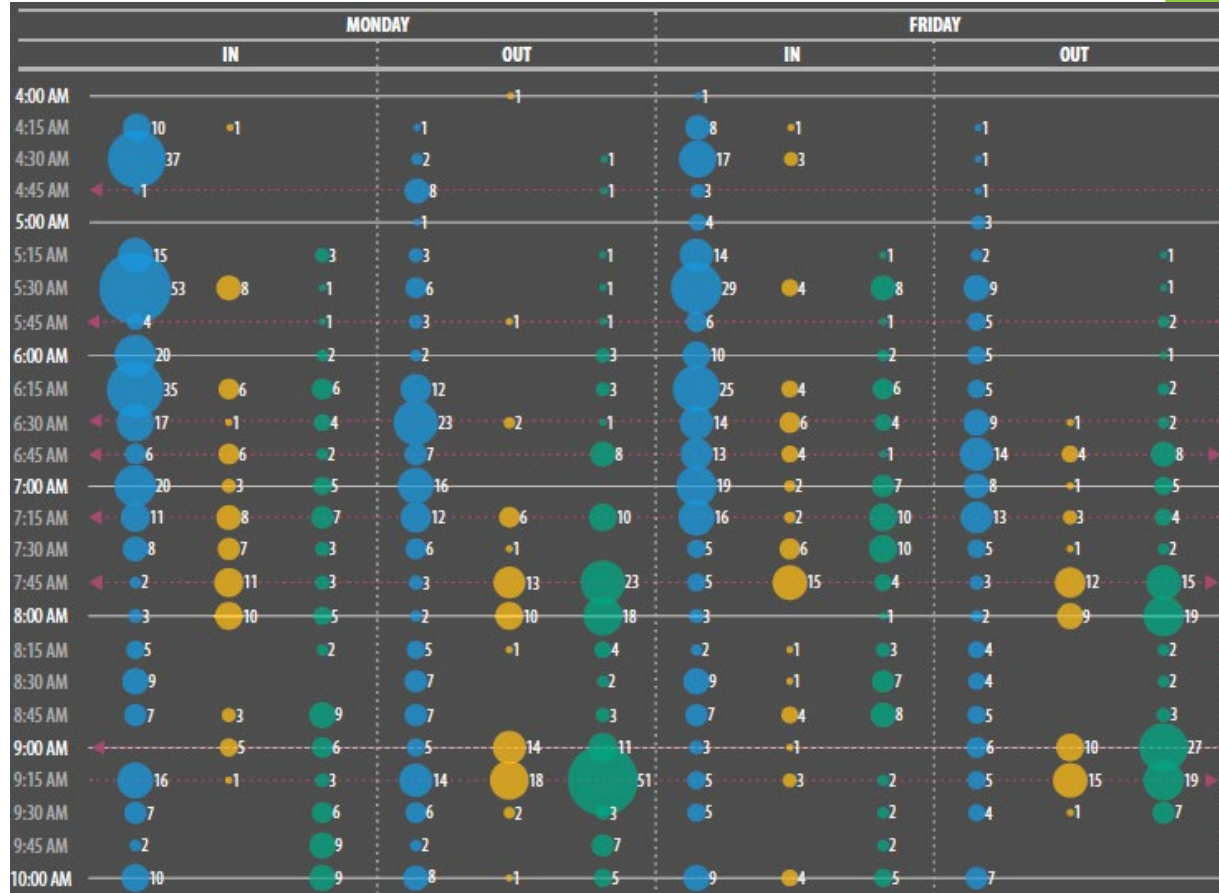
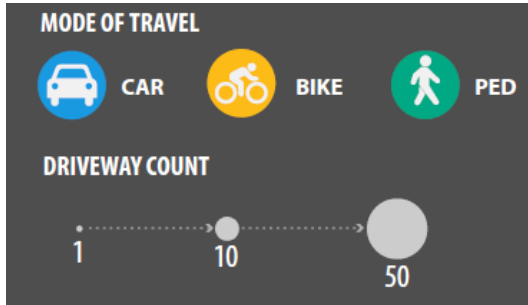


STATION ACCESS



- 40 Driveway Count
- Informal Crossings (Bike/Ped)
- Car
- Bike
- Ped

STATION ACCESS





PLANNED CONNECTIONS

DAVIS AMTRAK PLANNED CONNECTIONS



NEAR TERM ACCESS IMPROVEMENTS

Expand and improve curbside interface along H Street



AMTRAK BUS STATION IMPROVEMENTS

Potential enhancements

- All weather shelter
- Lighting
- Bus / rail information
- Connection to Depot



STRUCTURED PARKING

- 100 spaces per floor
- \$5 million per floor
- Two points of access
- Fire access around the building



MIXED-USE WITH PARKING



NEXT STEPS

- Exploring additional access points to station with Union Pacific
- Housing analysis for transit oriented development
- Site development scenarios
- Future mobility
- Commissions & committees
- Public workshop
- Draft study end of January



DEPOT PARKING





Davis Amtrak Station Access and Connections Study Stakeholder Advisory Committee Meeting #2

Wednesday, November 6, 2019 | 2:30 – 4:00 p.m. | Veterans Memorial Center, 203 E 14th Street

Agenda

- I. **Welcome and Introductions** – Ginger Hashimoto (5 minutes)
- II. **Meeting Goals and Objectives** – Adrian Engel (5 minutes)
- III. **Overview of the Study and What We've Heard** – Adrian Engel (5 minutes)
 - a. **Survey Results & Data Collection**
- IV. **Preliminary Near and Long-Term Improvements** – Adrian Engel (30 minutes)
- V. **Group Discussion Regarding Improvements** – All (35 minutes)
- VI. **Next Steps** – Ginger Hashimoto (10 minutes)

