

NOTES:

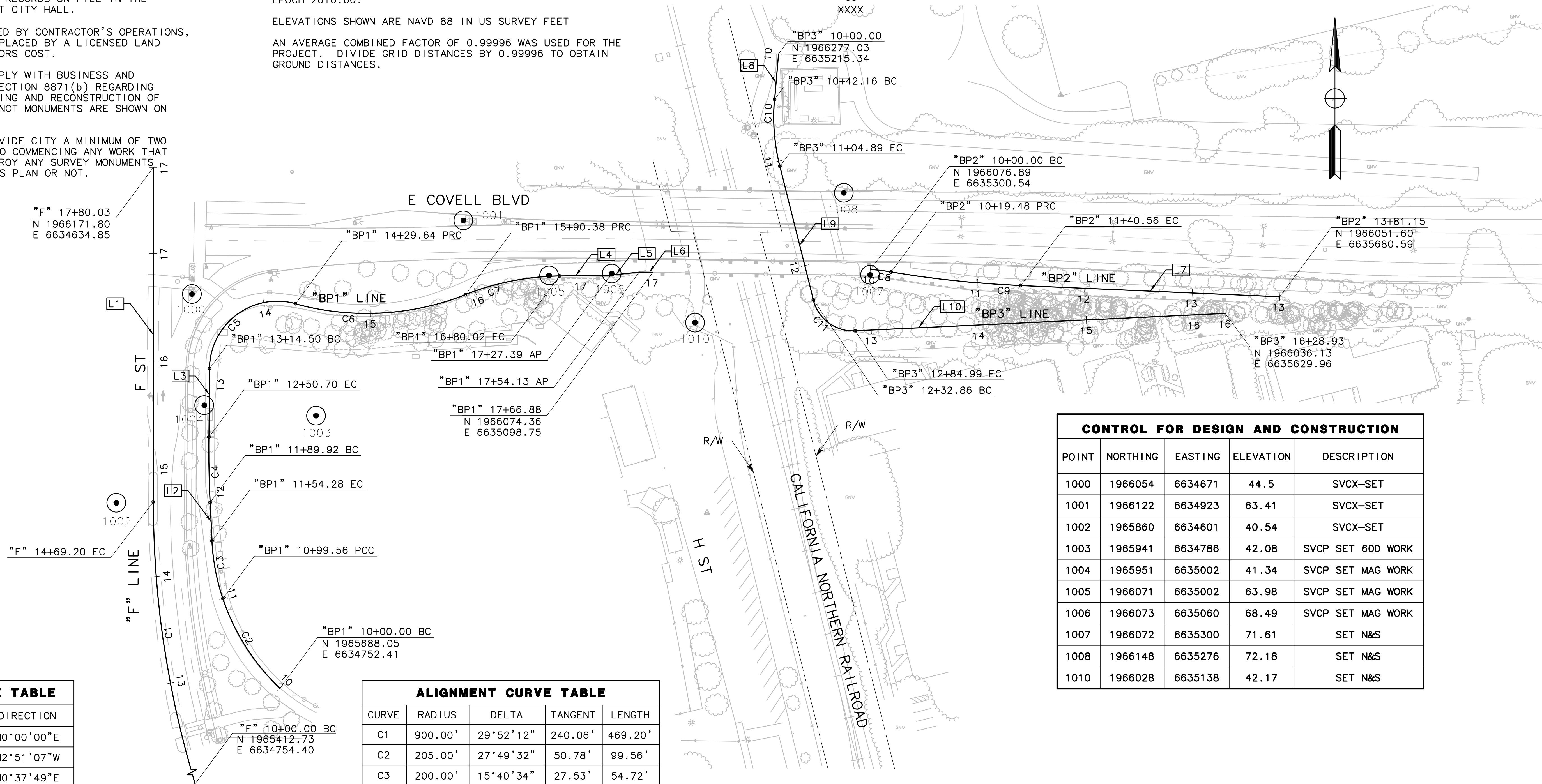
- FOR COMPLETE PROJECT CONTROL AND MONUMENTATION DATA, SEE THE SURVEY RECORDS ON FILE IN THE SURVEYS DEPARTMENT AT CITY HALL.
- IF MONUMENT IS DAMAGED BY CONTRACTOR'S OPERATIONS, MONUMENT SHALL BE REPLACED BY A LICENSED LAND SURVEYOR AT CONTRACTORS COST.
- CONTRACTOR SHALL COMPLY WITH BUSINESS AND PROFESSIONALS CODE SECTION 8871(b) REGARDING REFERENCING, PRESERVING AND RECONSTRUCTION OF MONUMENT WHETHER OR NOT MONUMENTS ARE SHOWN ON PLANS.
- CONTRACTOR SHALL PROVIDE CITY A MINIMUM OF TWO WEEKS NOTICE PRIOR TO COMMENCING ANY WORK THAT COULD DAMAGE OR DESTROY ANY SURVEY MONUMENTS, WHETHER SHOWN ON THIS PLAN OR NOT.

DATUM:

HORIZONTAL COORDINATES SHOWN ARE, CCS83 (2011) ZONE 2, EPOCH 2010.00.
 ELEVATIONS SHOWN ARE NAVD 88 IN US SURVEY FEET
 AN AVERAGE COMBINED FACTOR OF 0.99996 WAS USED FOR THE PROJECT. DIVIDE GRID DISTANCES BY 0.99996 TO OBTAIN GROUND DISTANCES.

LEGEND

○ CONTROL POINT
 XXXX



CONTROL FOR DESIGN AND CONSTRUCTION				
POINT	NORTHING	EASTING	ELEVATION	DESCRIPTION
1000	1966054	6634671	44.5	SVCX-SET
1001	1966122	6634923	63.41	SVCX-SET
1002	1965860	6634601	40.54	SVCX-SET
1003	1965941	6634786	42.08	SVCP SET 60D WORK
1004	1965951	6635002	41.34	SVCP SET MAG WORK
1005	1966071	6635002	63.98	SVCP SET MAG WORK
1006	1966073	6635060	68.49	SVCP SET MAG WORK
1007	1966072	6635300	71.61	SET N&S
1008	1966148	6635276	72.18	SET N&S
1010	1966028	6635138	42.17	SET N&S

ALIGNMENT LINE TABLE		
LINE #	LENGTH	DIRECTION
L1	310.84'	N0°00'00"E
L2	35.64'	N2°51'07"W
L3	63.81'	N0°37'49"E
L4	47.37'	N89°03'02"E
L5	26.74'	N84°01'59"E
L6	12.76'	S89°32'18"E
L7	240.60'	S87°31'08"E
L8	42.16'	S5°01'11"W
L9	127.98'	S14°05'47"E
L10	343.94'	N87°18'24"E

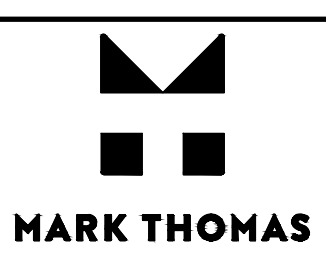
ALIGNMENT CURVE TABLE				
CURVE	RADIUS	DELTA	TANGENT	LENGTH
C1	900.00'	29°52'12"	240.06'	469.20'
C2	205.00'	27°49'32"	50.78'	99.56'
C3	200.00'	15°40'34"	27.53'	54.72'
C4	1000.00'	3°28'57"	30.40'	60.78'
C5	63.00'	104°42'51"	81.68'	115.14'
C6	250.00'	36°50'18"	83.26'	160.74'
C7	250.00'	20°32'40"	45.31'	89.64'
C8	206.00'	5°25'05"	9.75'	19.48'
C9	994.00'	6°58'44"	60.61'	121.07'
C10	188.00'	19°06'58"	31.66'	62.72'
C11	38.00'	78°35'49"	31.10'	52.13'

APPROVED FOR PROJECT CONTROL INFORMATION ONLY



SCALE: 1"=50'

REV.	DATE	DESCRIPTION	BY



CANNERY GRADE SEPARATED CROSSING PROJECT CONTROL
 C.I.P. # 8288



CITY OF DAVIS
 PUBLIC WORKS DEPARTMENT
 1717 5TH STREET
 PHONE (530)757-5686 FAX (530)758-4738

DESIGNED BY: J. Iniguez	CHECKED BY: M. Magaw	R.C.E. 87451	DATE: 09/30/2019
DRAWN BY: J. Iniguez			DWG. NO. PC-1
SHEET 2 OF 30 SHEETS			