

## STAFF REPORT

**DATE:** February 15, 2022

**TO:** City Council

**FROM:** Mike Webb, City Manager  
Kelly Stachowicz, Assistant City Manager  
Zoe Mirabile, City Clerk

**SUBJECT:** City Council Redistricting Process 2022 – Final Map

---

### **Recommendation**

1. Hold Public Hearing to receive input on final map.
2. Introduce Ordinance (Attachment 1) to adopt final map (Attachment 2)

### **Fiscal Impact**

Project costs have been previously allocated and approved and are funded through General Fund. Redistricting Partners is providing demographer services at a cost not to exceed \$44,000. The cost of outreach materials and staff resources are allocated in the current City Manager's Office budget.

### **Council Goal(s)**

1. Ensure a Safe, Healthy, Equitable Community  
Objective 8: Complete City's transition to City Council Districts, begun in 2019.  
A. In preparation for the 2022 November election and beyond, complete a citywide redistricting process based on the 2020 census information.
2. Foster Excellence in City Services

### **Commission Input**

This matter impacts the conduct of elections and is under the direct authority of City Council.

### **Background and Analysis**

In the fall of 2019, the City Council transitioned from at-large city council elections to district elections, with the creation of a five-district system. Jurisdictions must now redistrict using the new 2020 census population numbers and data. The City, by law, may not abandon the district (or redistricting) process and must complete a new redistricting process no later than April 2022.

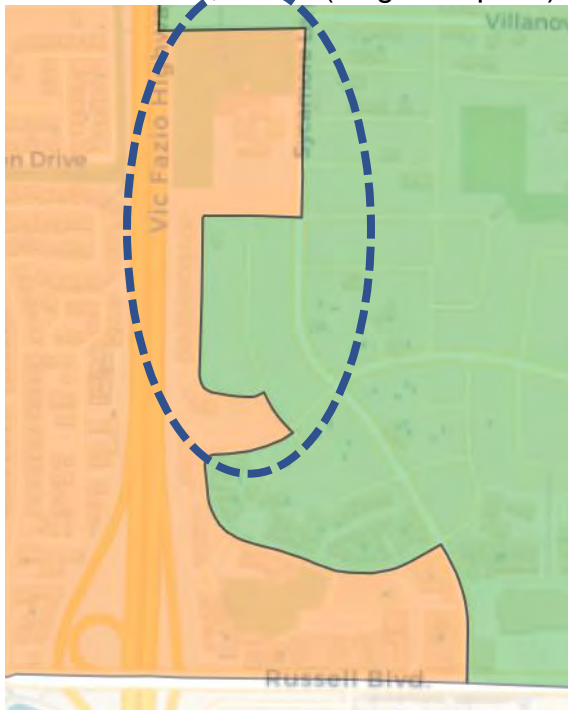
The City Council began discussions on the current redistricting process on October 5 and subsequently held public hearings to take input and review draft maps on November 2, December 7, January 11, and February 1. Copies of previous staff reports,

presentations, and additional information about redistricting can be found at [www.cityofdavis.org/districts](http://www.cityofdavis.org/districts).

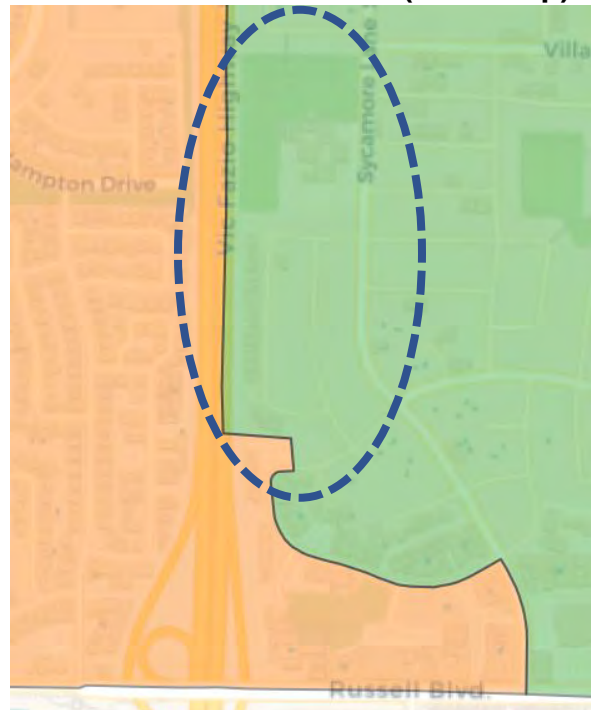
At the February 1 Council meeting, the Council selected a final draft map (Plan A) and requested some adjustments to the map, resulting in a final map (Plan A2). The changes were intended to allow a portion of a census block to be split in order to keep a neighborhood together in District 2. Specifically, all of Acacia Lane and Cornell Drive, as well a few properties on the north side of West Eighth Street will remain in District 2. Willett Elementary and Sycamore Park will also remain in District 2, although neither parcel has residents.

The small area of the overall map where the Council requested changes on February 1 is shown below.

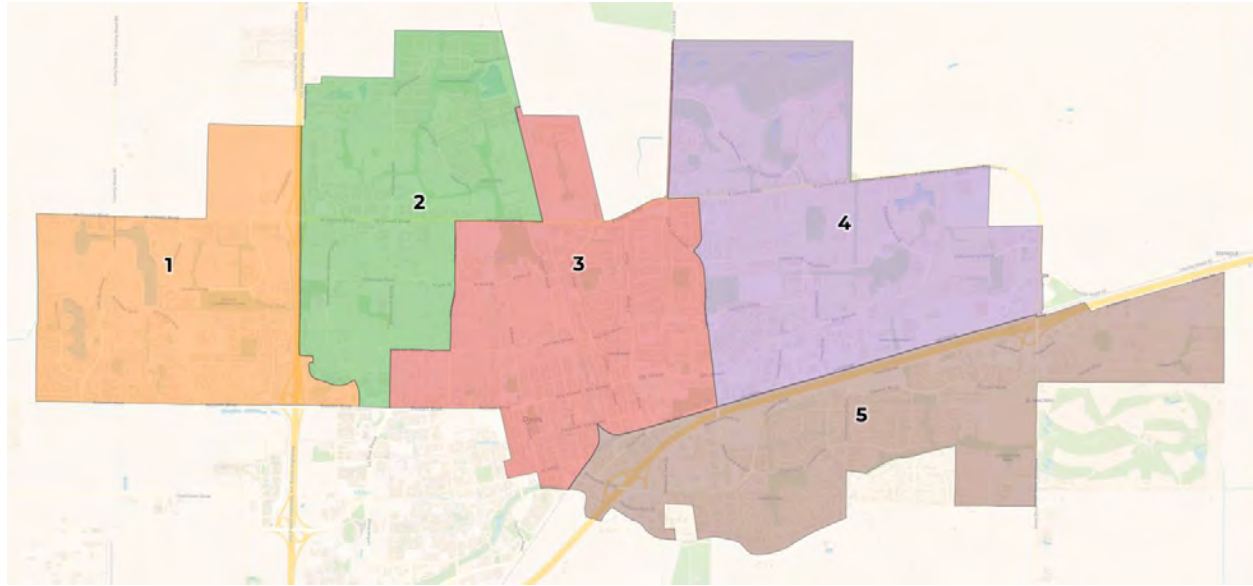
Plan A (Original Option)



Plan A2 (Final Map)



The full Plan A2 map (final map) is shown below (and also in Attachment 2):



This final map option provides continuity between the current districts, which were newly drawn in 2020, and the new districts. It defers a minimum number of individuals (68); accelerates 757 individuals; moves Aggie Village into District 3, which includes the downtown; and incorporates the population in The Cannery, which did not exist at the time of the 2010 census. The final map has a total deviation of 8.4%, which is under the legally allowable 10% deviation. The largest district is District 2, with 495 more people than the target population (3.7%), and the smallest is District 5, with 634 people fewer (-4.7%) than the target population. Additional demographic information can be found in Attachment 2. The final map meets all legal requirements under the law.

District	Population	Dev. From Ideal	Dev %
1	13,794	404	3.0%
2	13,885	495	3.7%
3	13,324	-66	-0.5%
4	13,189	-201	-1.5%
5	12,756	-634	-4.7%
<b>Total Deviation</b>			<b>8.4%</b>

If the Council approves the final map, the City’s demographer will work with the County Elections Office to finalize the district boundaries in time for the November election where Districts 1 and 4 will be on the ballot. The City will work on outreach to the community regarding the final map. If the Council does not adopt the final map at the February 15 meeting, staff will return with any requested changes to a new final map at a future meeting.

**Attachments**

1. Ordinance
2. Final Map (with demographics)

**ORDINANCE NO.**

**ORDINANCE ADJUSTING THE BOUNDARIES OF THE DAVIS CITY COUNCIL  
ELECTORAL DISTRICTS AND AMENDING CHAPTER 12, SECTION 12.01.050 OF  
THE DAVIS MUNICIPAL CODE RELATED TO ADJUSTMENT OF COUNCIL  
DISTRICT BOUNDARIES TO CONFORM TO STATE LAW**

WHEREAS, the City of Davis transitioned from at-large to by-district City Council elections in 2019; and

WHEREAS, City Council must adopt district boundaries using decennial census data to ensure that districts remain substantially equal in population; and

WHEREAS, the Fair Maps Act of 2019 amended the California Elections Code to proscribe the redistricting process including public hearing and map requirements, which necessitates an amendment to the Davis Municipal Code to conform to state law; and

WHEREAS, City Council held public hearings on November 2 and December 7, 2021, and January 11, February 1, and February 15, 2022, to receive information about the redistricting process and state and federal redistricting criteria, hear public testimony, and deliberate on draft district maps; and

WHEREAS, on February 1, 2022, City Council selected a preferred district map with districts substantially equal in population which complies with all state and federal redistricting criteria.

NOW, THEREFORE, THE CITY COUNCIL OF THE CITY OF DAVIS DOES HEREBY ORDAIN AS FOLLOWS:

Section 1. The Official City Council District Map attached as Exhibit "A" is hereby approved. City Council establishes the boundaries as depicted on the map for subsequent elections until further readjustment is required by law. The Official City Council District Map shall be kept on file in the Office of the City Clerk.

Section 2. Davis Municipal Code Chapter 12 Elections, Section 12.01.050 Adjustment of Council District Boundaries, is hereby amended to read as follows:

- A. The City Council shall adjust the boundaries of any or all of the districts following each decennial federal census to ensure that districts are as equal in population as practicable and in compliance with all applicable provisions of law. The redistricting process shall be conducted in accordance with state law. Any adjustment of district boundaries shall be made by ordinance adopted by the City Council.

- B. At the time of any annexation of territory to the City, the City Council shall designate, by resolution adopted by a vote of at least a majority of the City Council, the contiguous district to which the annexed territory shall be a part.

INTRODUCED on the 15th day of February, 2022 and PASSED AND ADOPTED by the City Council of the City of Davis on this 1st day of March, 2022, by the following vote:

AYES:

NOES:

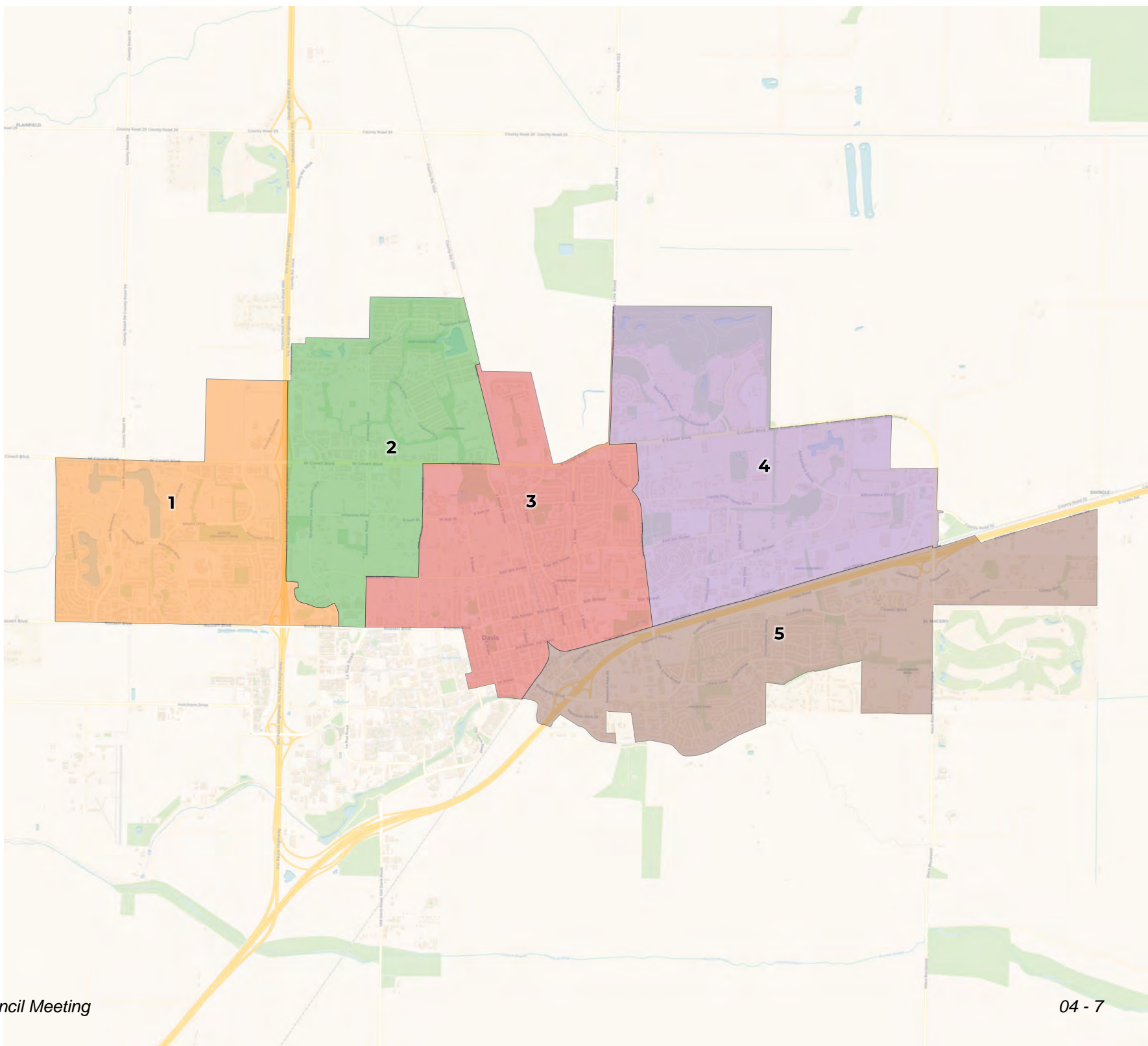
Gloria J. Partida  
Mayor

ATTEST:

Zoe S. Mirabile, CMC  
City Clerk

**REDISTRICTING  
PARTNERS**

**City of Davis**  
Draft Plan A2



**2020 Census**

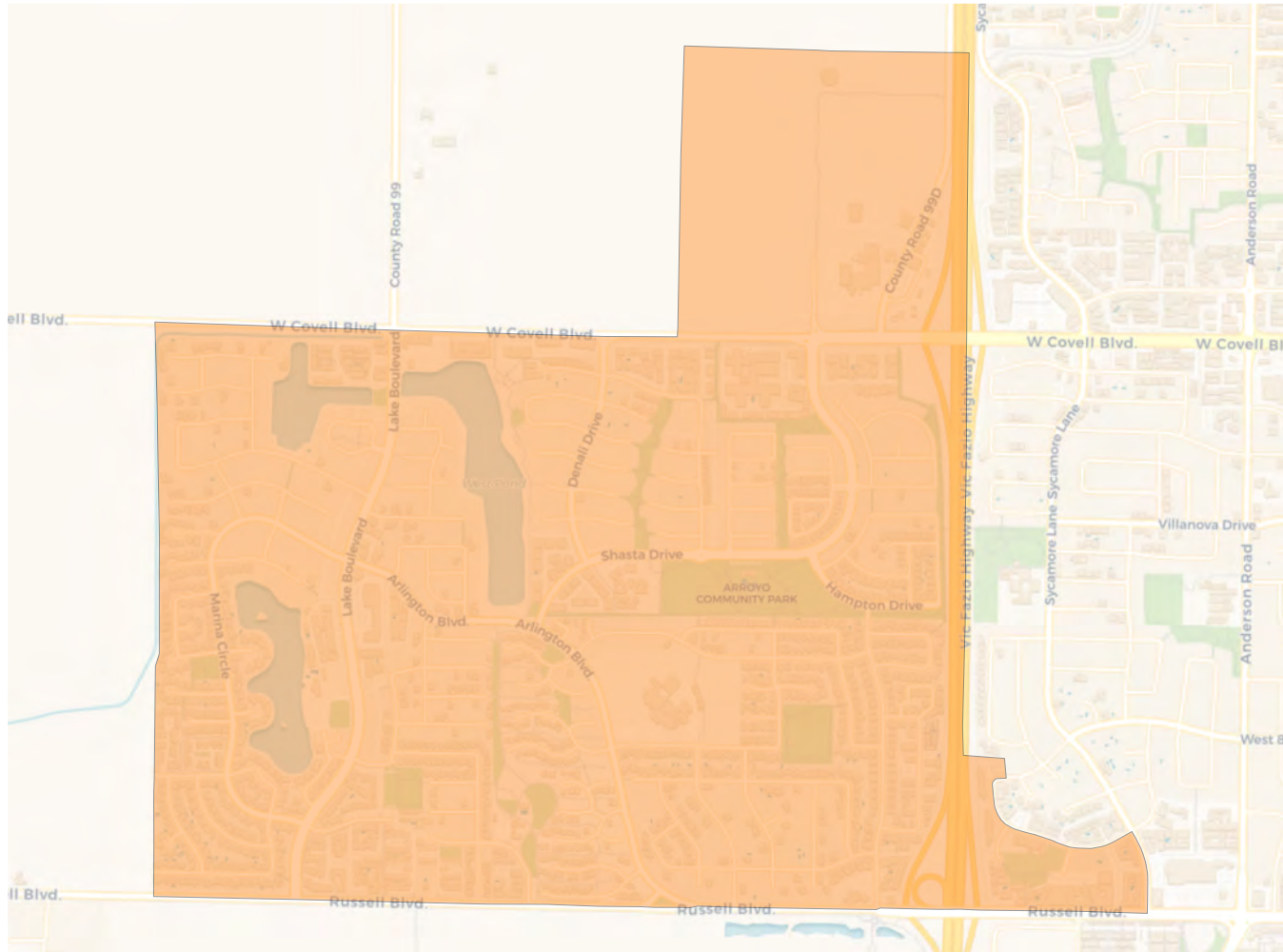
	1	2	3	4	5
Population	13,892	13,787	13,324	13,189	12,756
Deviation	502	397	-66	-201	-634
Deviation %	3.7%	3.0%	-0.5%	-1.5%	-4.7%
Other	8,289	8,325	8,017	8,095	6,643
Other %	59.7%	60.4%	60.2%	61.4%	52.1%
Latino	2,317	2,302	2,609	1,867	2,287
Latino %	16.7%	16.7%	19.6%	14.2%	17.9%
Asian	2,937	2,882	2,401	2,897	3,509
Asian %	21.1%	20.9%	18.0%	22.0%	27.5%
Black	349	278	297	330	317
Black %	2.5%	2.0%	2.2%	2.5%	2.5%

**Citizen Voting Age Population (CVAP)**

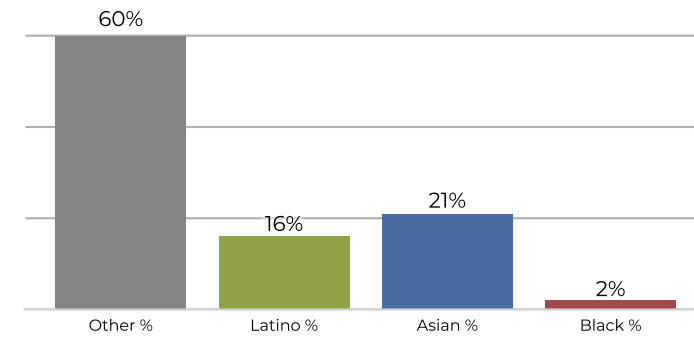
	1	2	3	4	5
Total CVAP	11,264	11,986	9,685	8,614	8,816
Other CVAP	7,472	7,769	6,641	6,185	5,284
Other CVAP %	66.3%	64.8%	68.6%	71.8%	59.9%
Latino CVAP	1,698	1,438	1,209	794	1,366
Latino CVAP %	15.1%	12.0%	12.5%	9.2%	15.5%
Asian CVAP	1,975	2,564	1,357	1,451	2,010
Asian CVAP %	17.5%	21.4%	14.0%	16.8%	22.8%
Black CVAP	119	215	478	184	156
Black CVAP %	1.1%	1.8%	4.9%	2.1%	1.8%



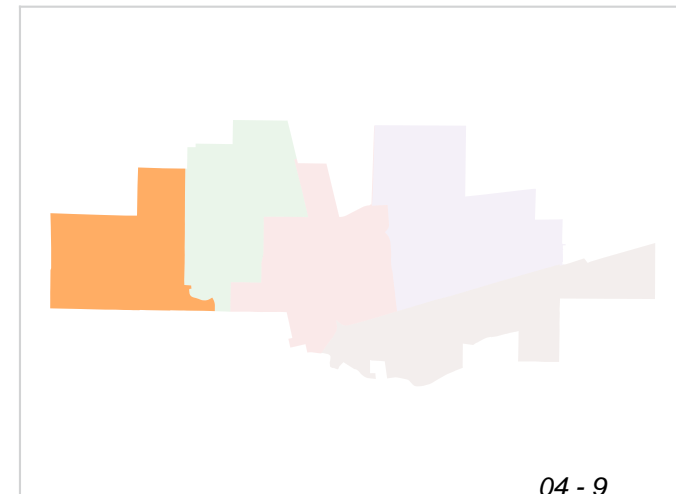
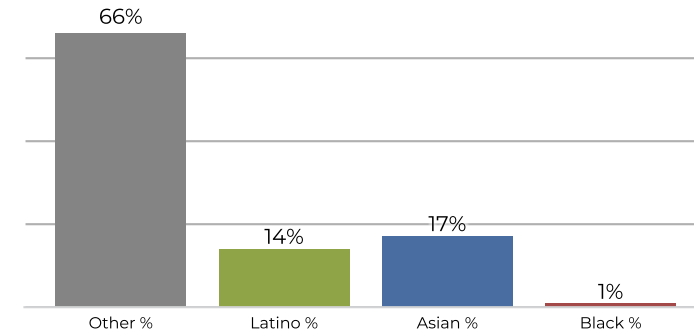
**District 1**



**2020 Census**

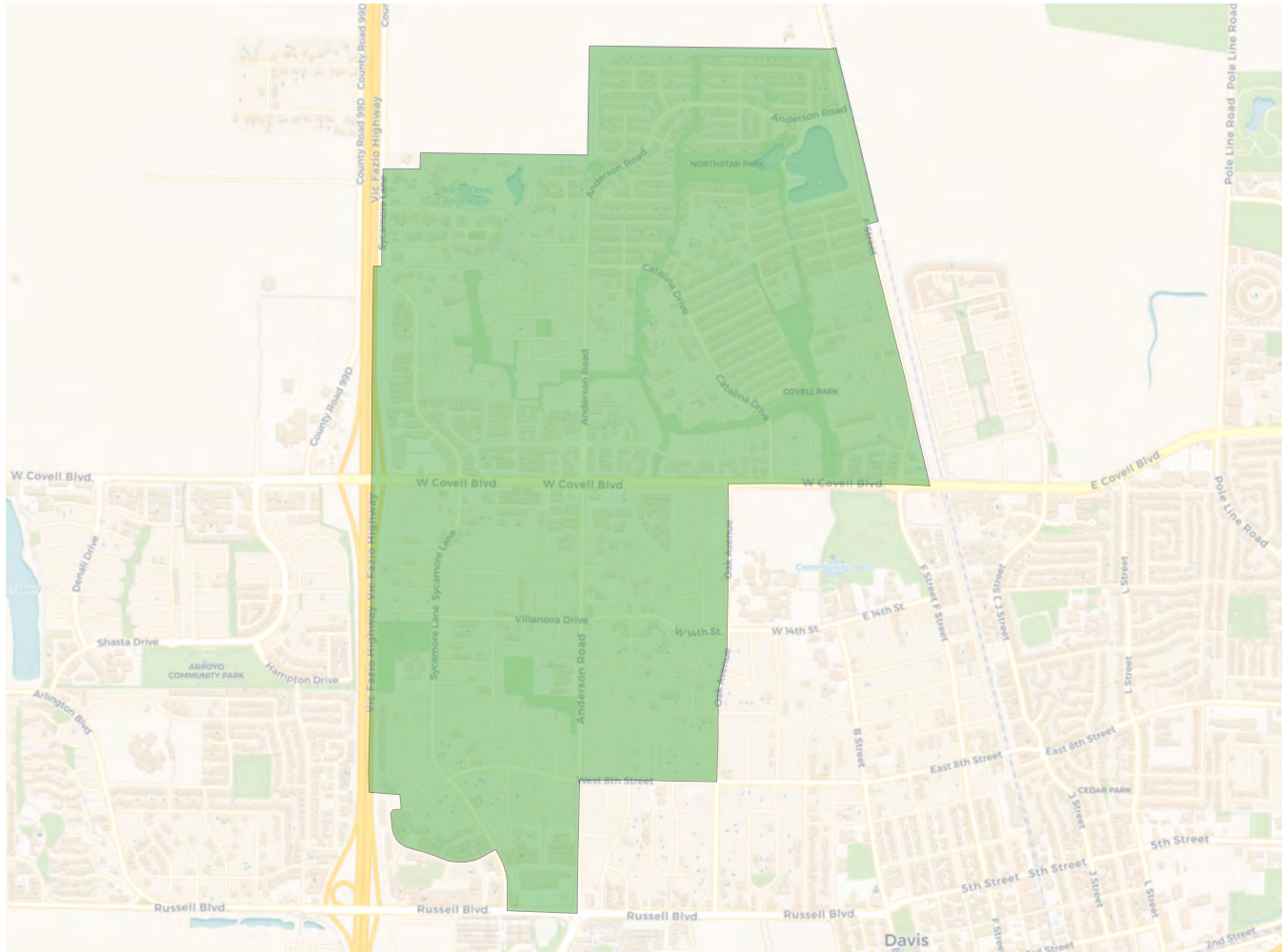


**Citizen Voting Age Population**

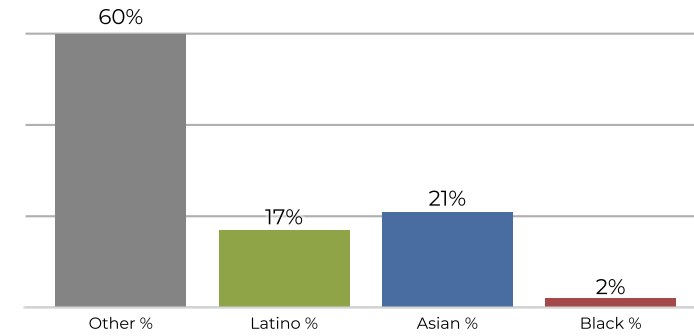


Population	Deviation	Deviation %	Other	Other %	Latino	Latino %	Asian	Asian %	Black	Black %
13,394	4	0.0%	8,041	60.0%	2,195	16.4%	2,818	21.0%	340	2.5%
Total CVAP	Other CVAP	Other CVAP %	Latino CVAP	Latino CVAP %	Asian CVAP	Asian CVAP %	Black CVAP	Black CVAP %		
10,926	7,313	66.9%	1,633	14.9%	1,865	17.1%	115	1.1%		

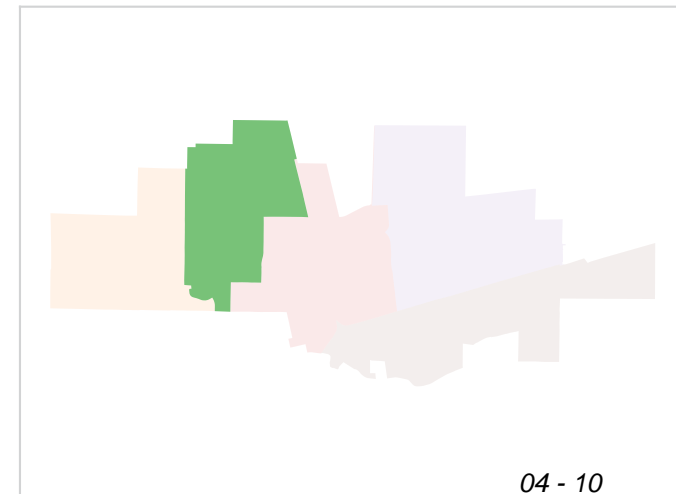
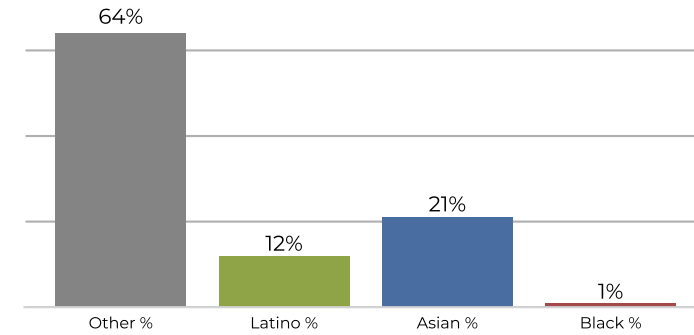
**District 2**



**2020 Census**

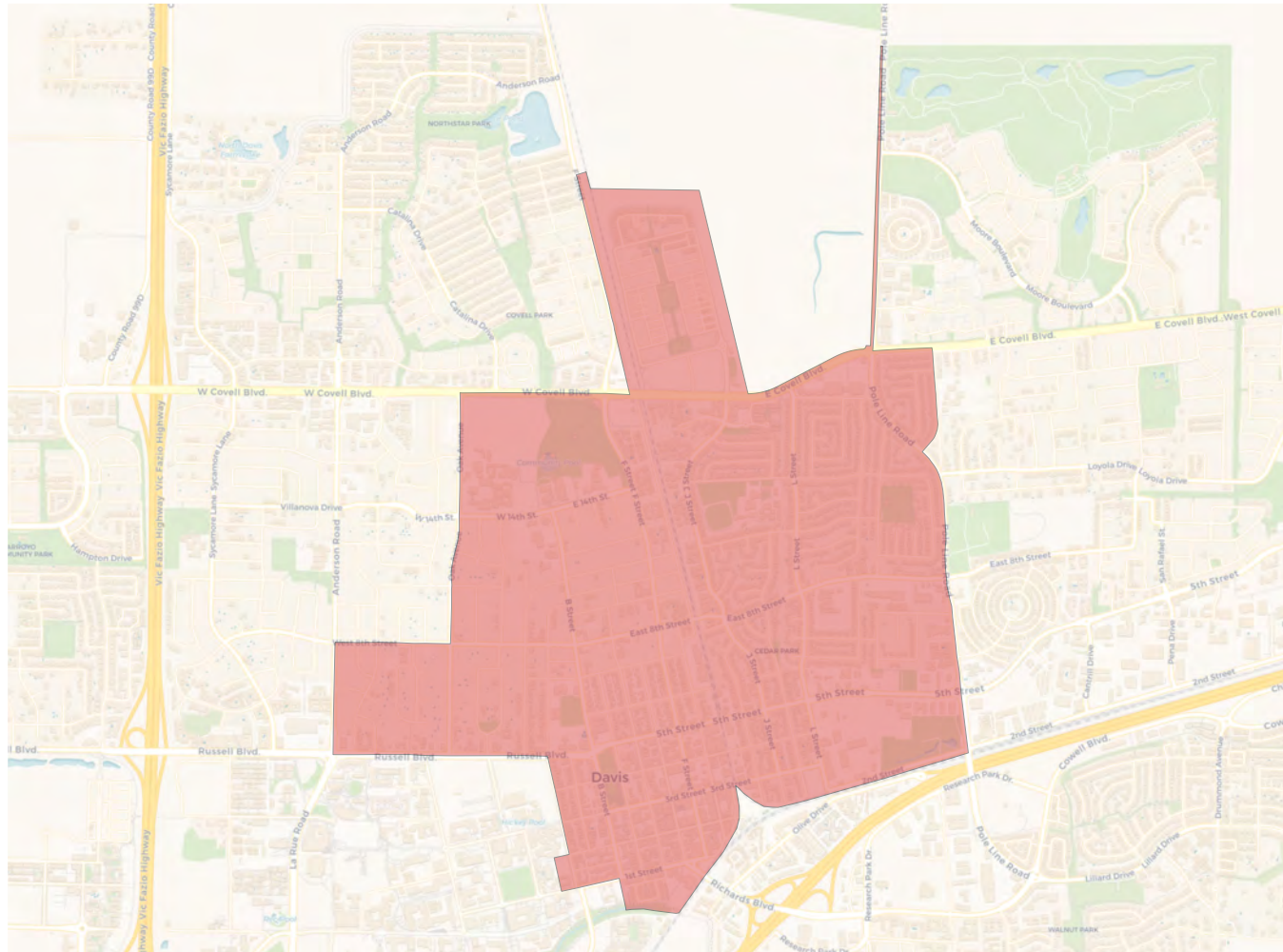


**Citizen Voting Age Population**

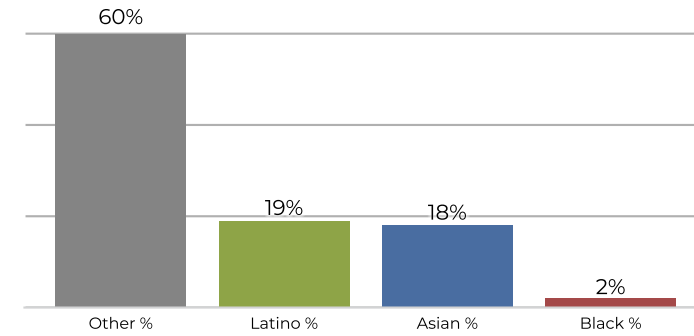


Population	Deviation	Deviation %	Other	Other %	Latino	Latino %	Asian	Asian %	Black	Black %
14,285	895	6.7%	8,573	60.0%	2,424	17.0%	3,001	21.0%	287	2.0%
Total CVAP	Other CVAP	Other CVAP %	Latino CVAP	Latino CVAP %	Asian CVAP	Asian CVAP %	Black CVAP	Black CVAP %		
12,324	7,928	64.3%	1,503	12.2%	2,674	21.7%	219	1.8%		

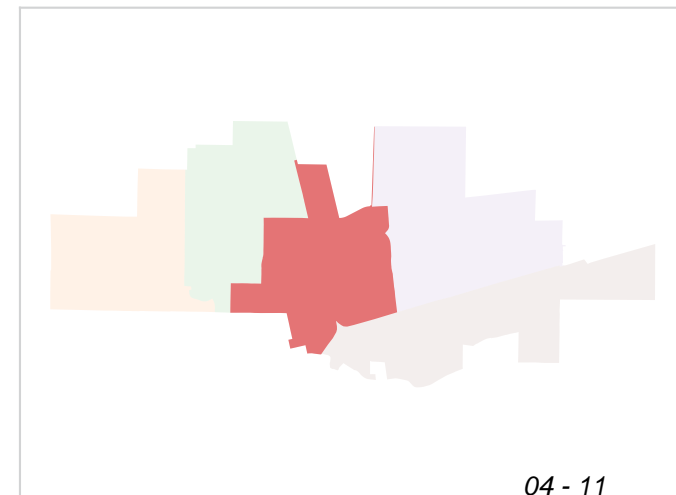
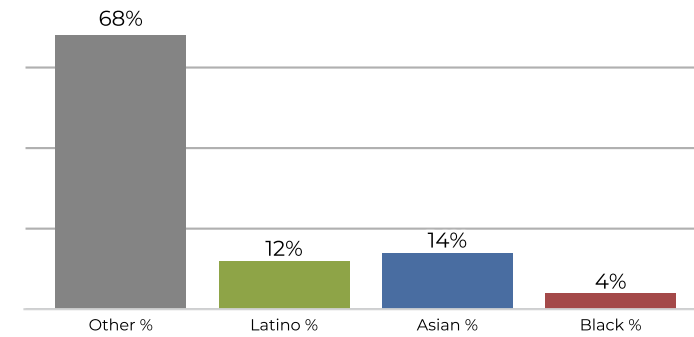
**District 3**



**2020 Census**

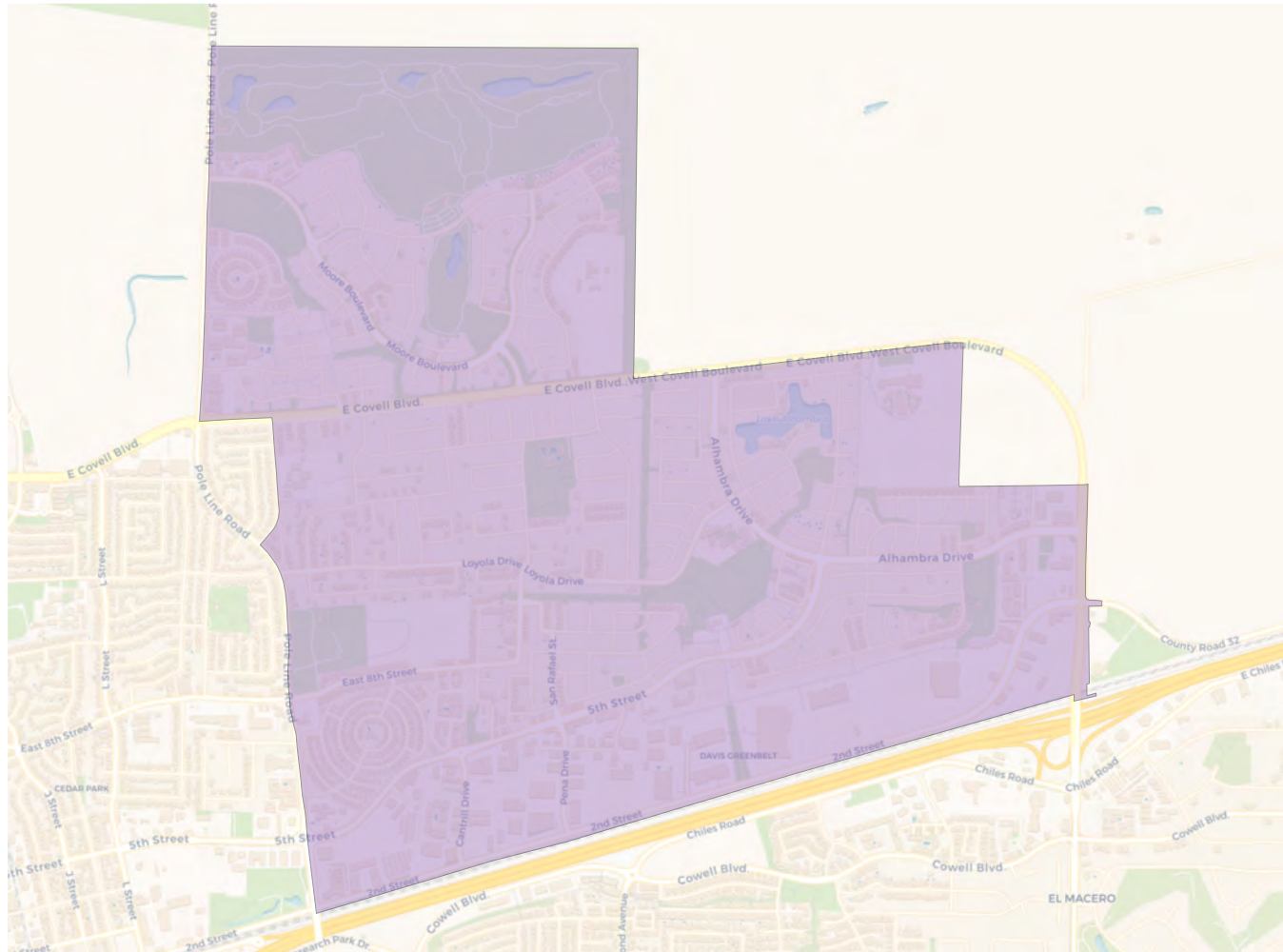


**Citizen Voting Age Population**

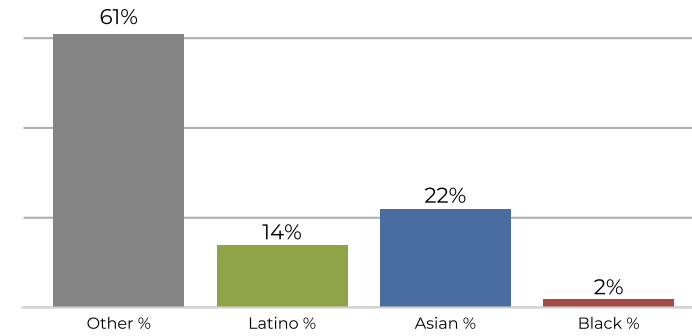


Population	Deviation	Deviation %	Other	Other %	Latino	Latino %	Asian	Asian %	Black	Black %
13,324	-66	-0.5%	8,017	60.2%	2,609	19.6%	2,401	18.0%	297	2.2%
Total CVAP	Other CVAP	Other CVAP %	Latino CVAP	Latino CVAP %	Asian CVAP	Asian CVAP %	Black CVAP	Black CVAP %		
9,685	6,641	68.6%	1,209	12.5%	1,357	14.0%	478	4.9%		

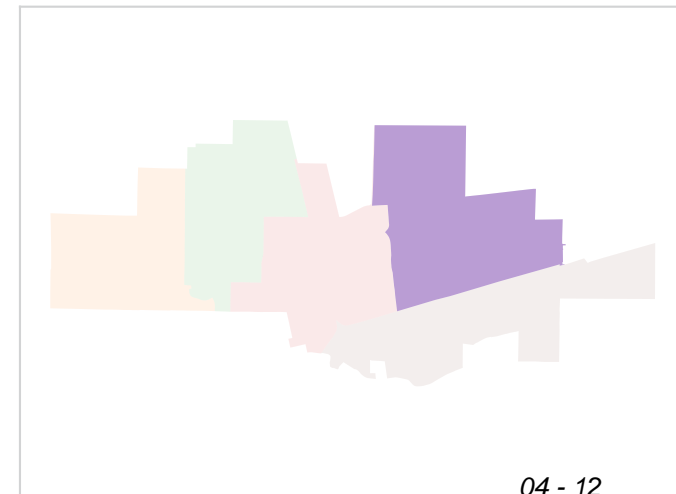
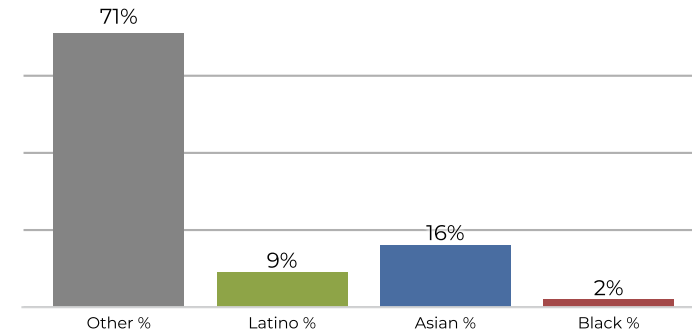
**District 4**



**2020 Census**

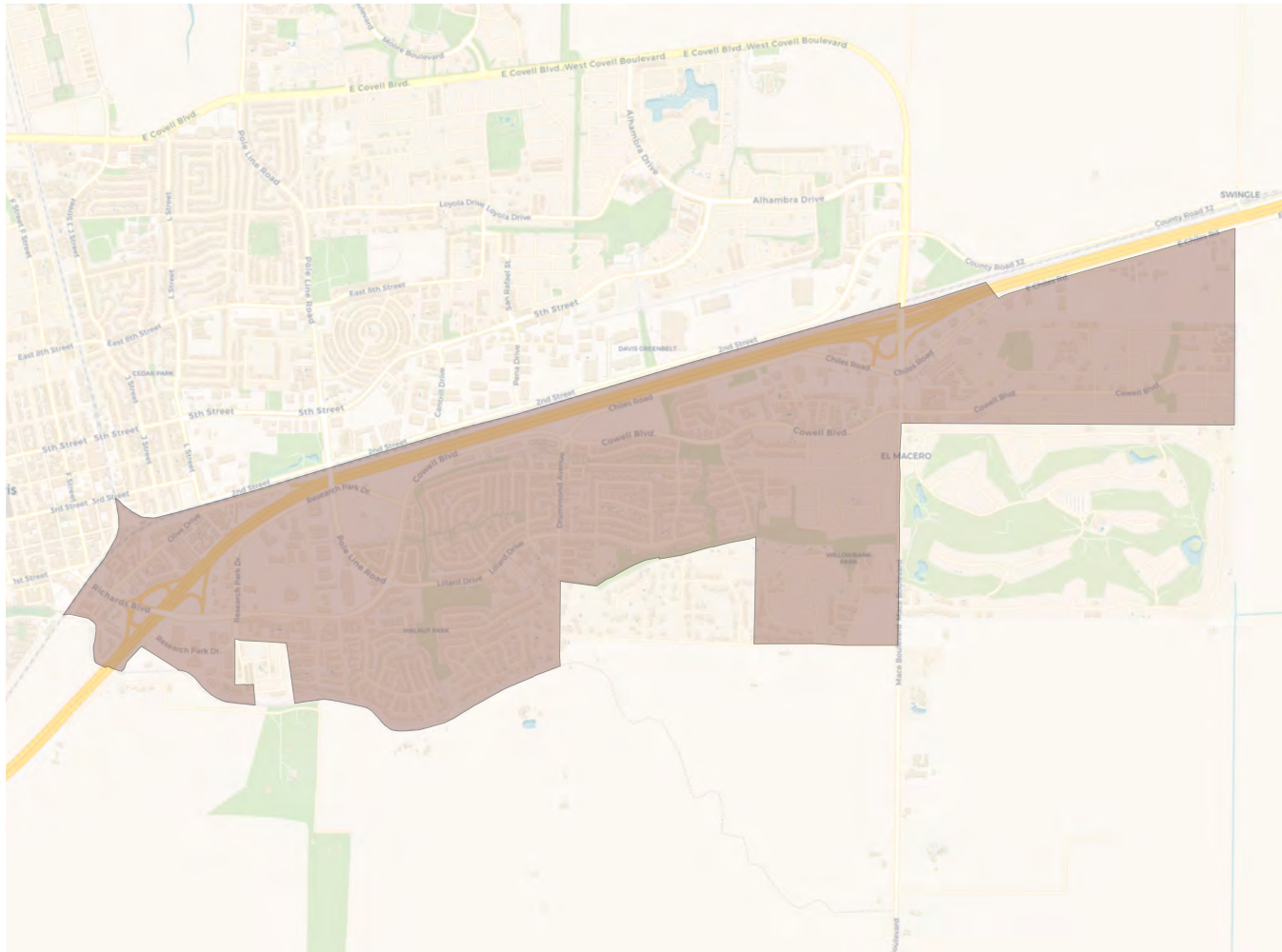


**Citizen Voting Age Population**

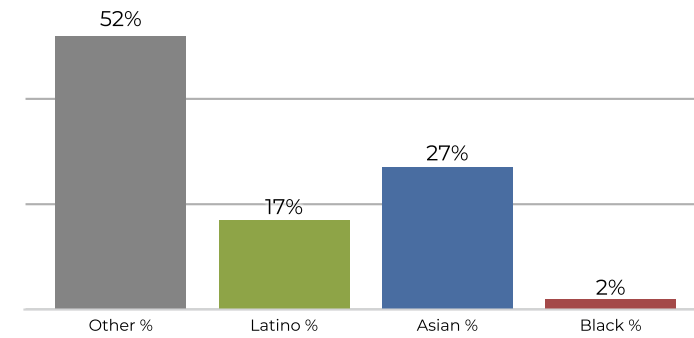


Population	Deviation	Deviation %	Other	Other %	Latino	Latino %	Asian	Asian %	Black	Black %
13,189	-201	-1.5%	8,095	61.4%	1,867	14.2%	2,897	22.0%	330	2.5%
Total CVAP	Other CVAP	Other CVAP %	Latino CVAP	Latino CVAP %	Asian CVAP	Asian CVAP %	Black CVAP	Black CVAP %		
8,614	6,185	71.8%	794	9.2%	1,451	16.8%	184	2.1%		

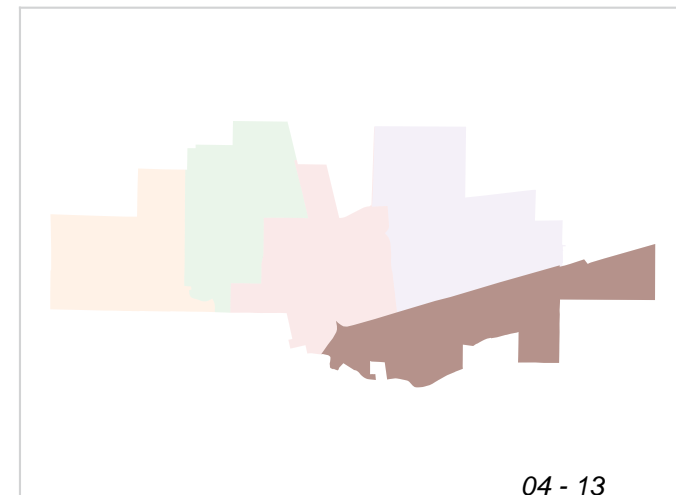
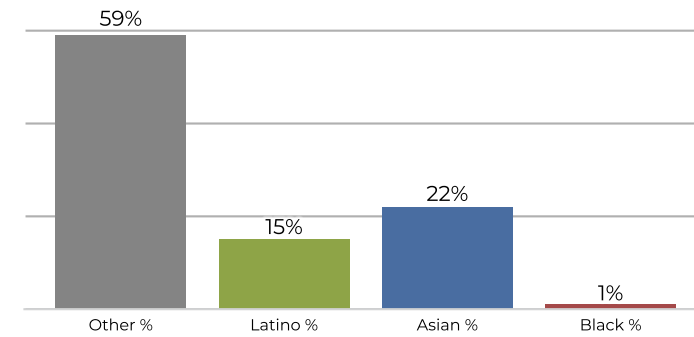
**District 5**



**2020 Census**



**Citizen Voting Age Population**



Population	Deviation	Deviation %	Other	Other %	Latino	Latino %	Asian	Asian %	Black	Black %
12,756	-634	-4.7%	6,643	52.1%	2,287	17.9%	3,509	27.5%	317	2.5%
Total CVAP	Other CVAP	Other CVAP %	Latino CVAP	Latino CVAP %	Asian CVAP	Asian CVAP %	Black CVAP	Black CVAP %		
8,816	5,284	59.9%	1,366	15.5%	2,010	22.8%	156	1.8%		