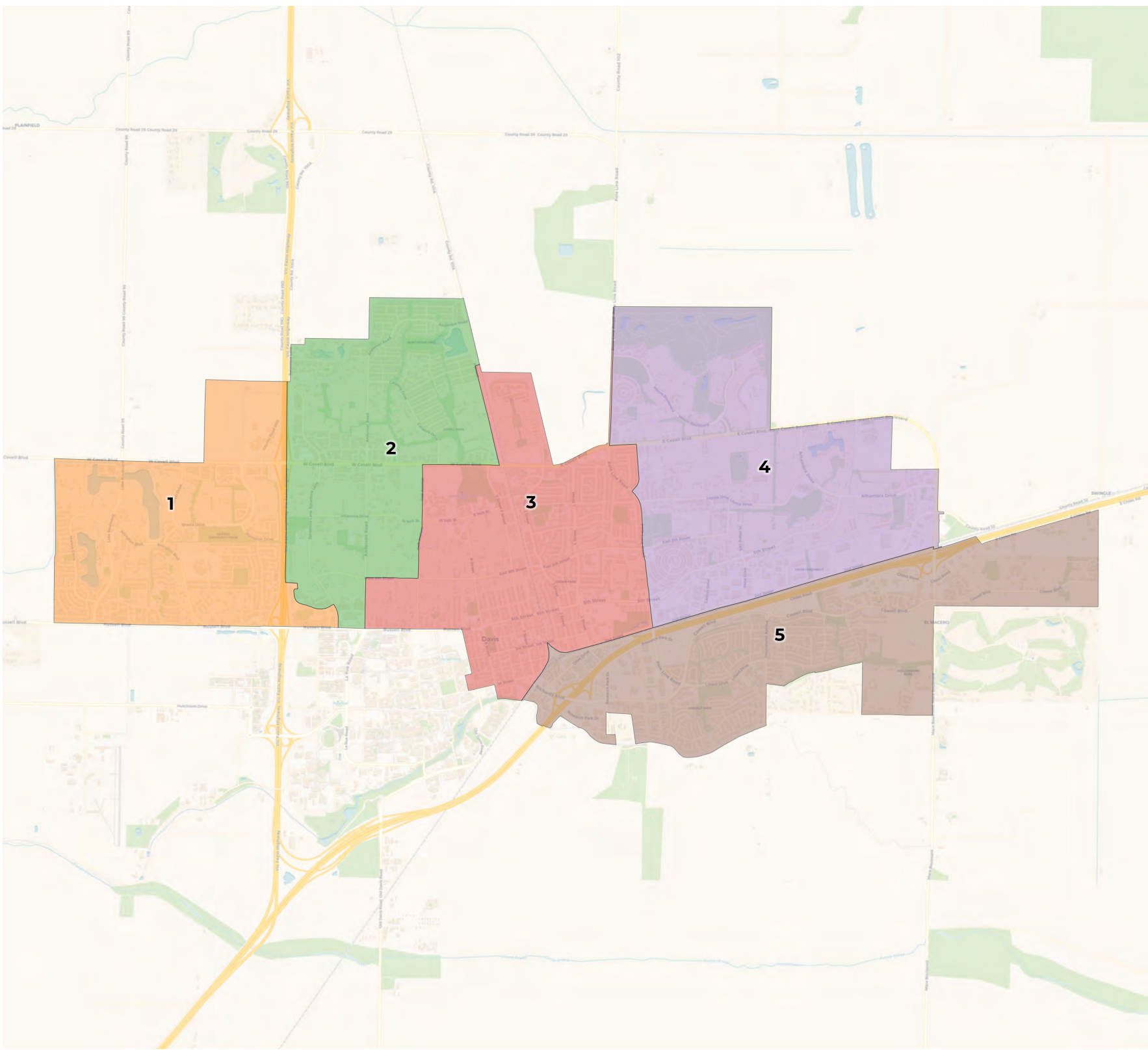




**REDISTRICTING
PARTNERS**

City of Davis

Redistricting 2022 Final Map

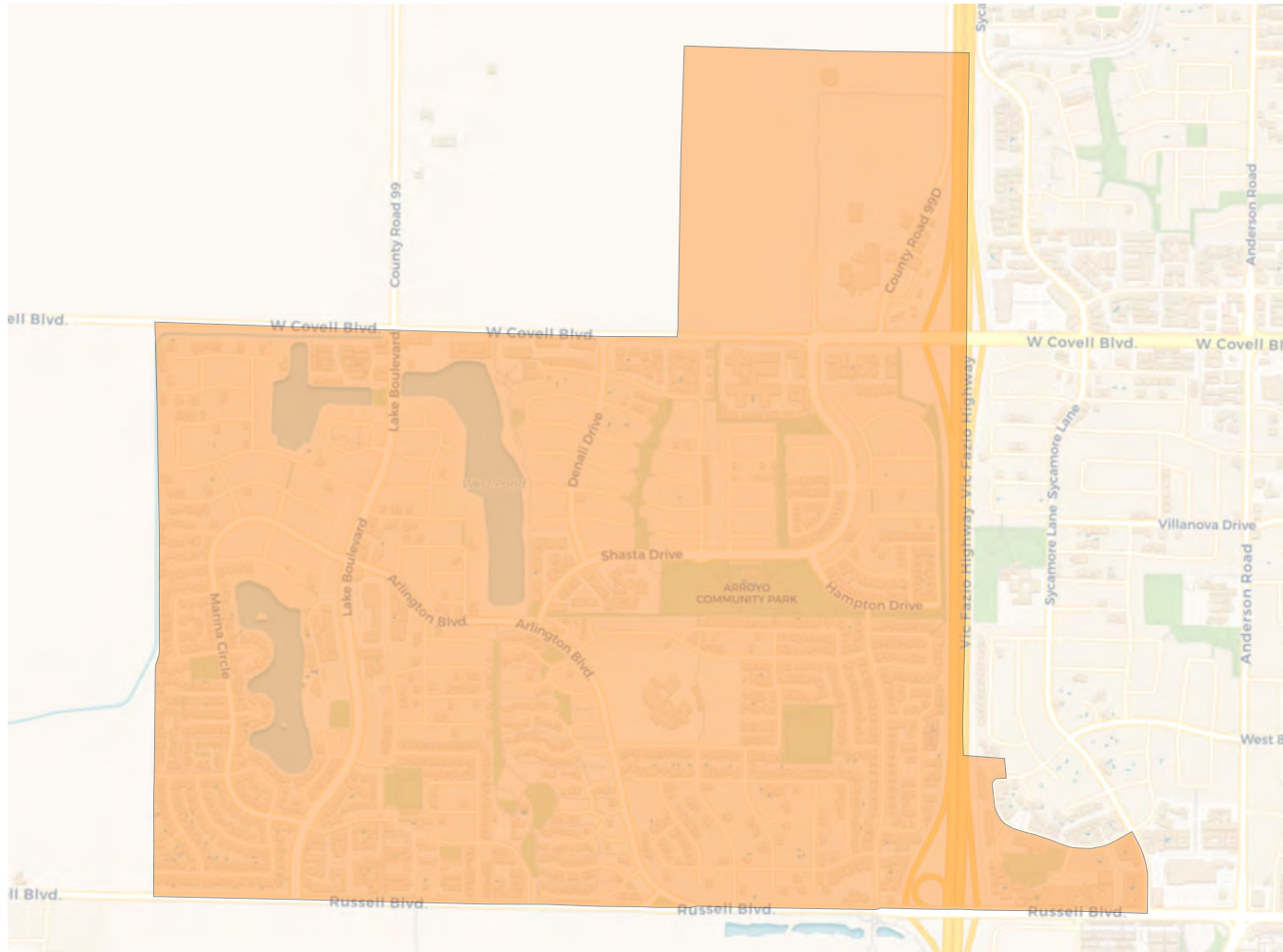
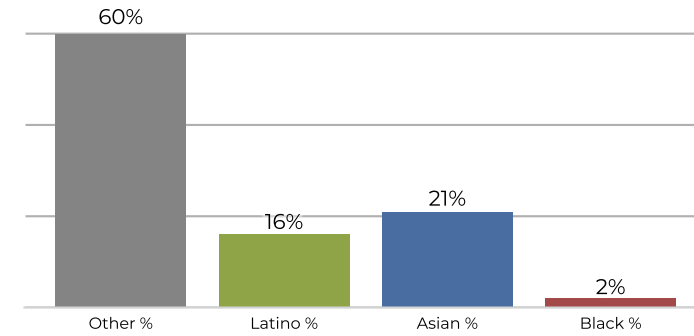
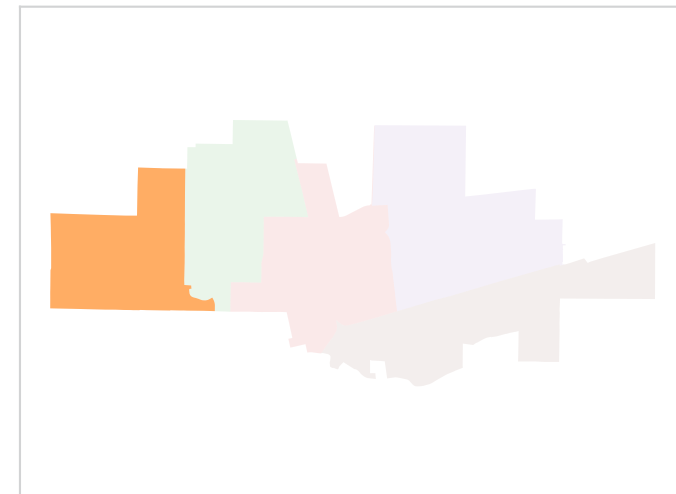
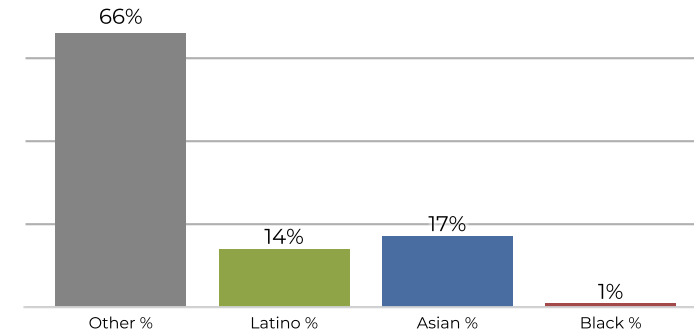


2020 Census

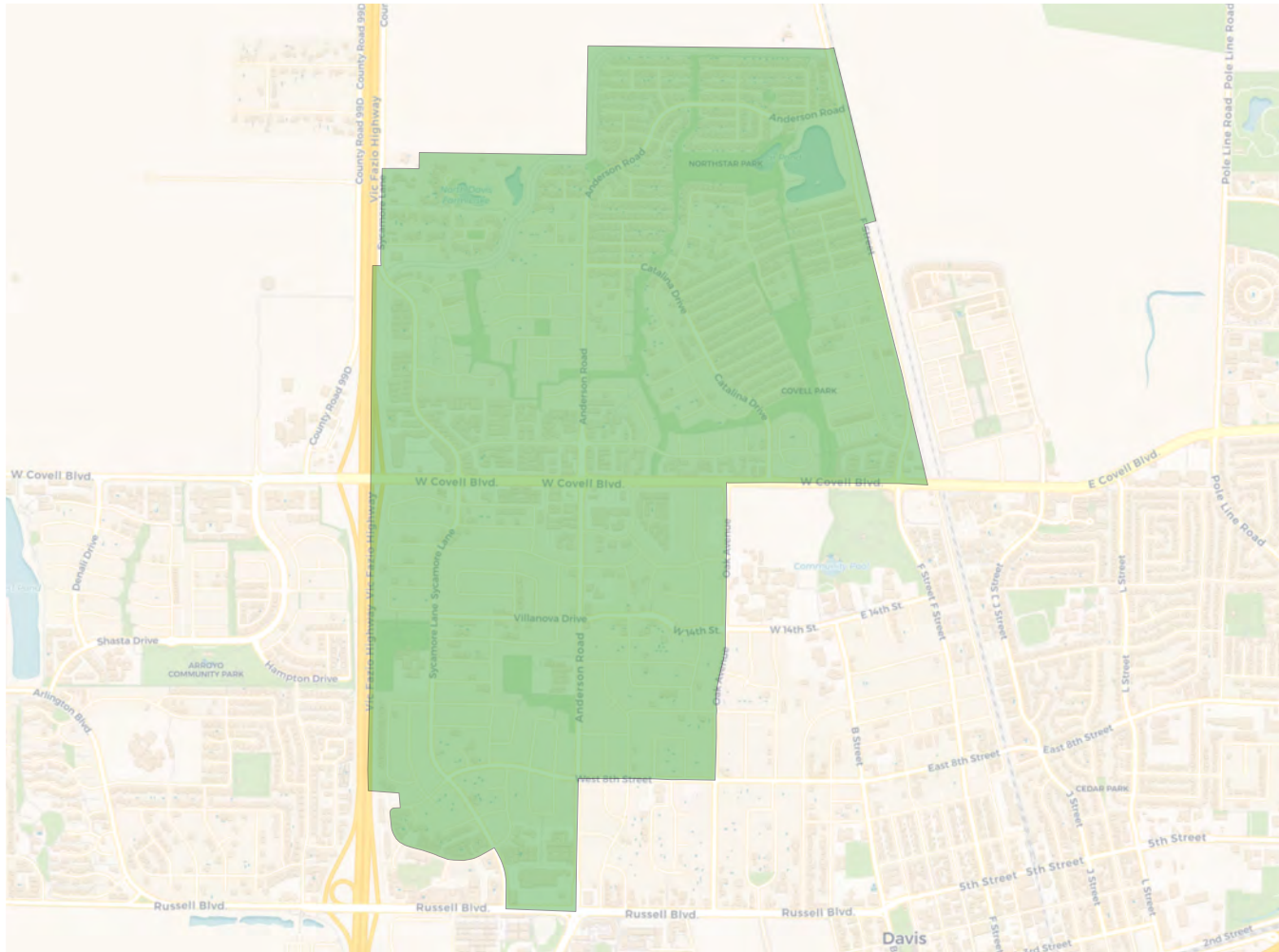
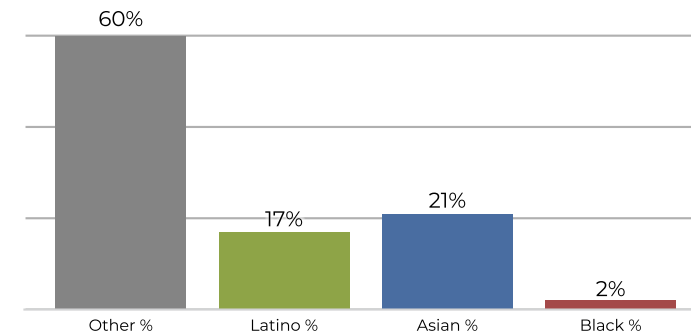
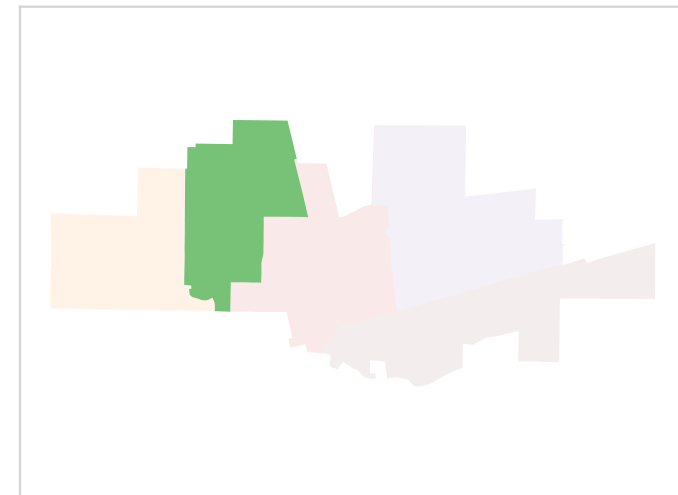
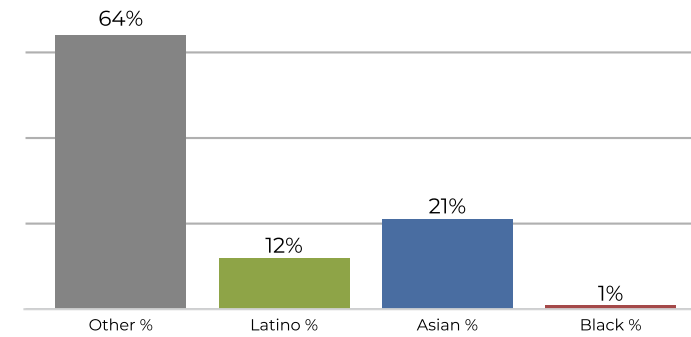
	1	2	3	4	5
Population	13,892	13,787	13,324	13,189	12,756
Deviation	502	397	-66	-201	-634
Deviation %	3.7%	3.0%	-0.5%	-1.5%	-4.7%
Other	8,289	8,325	8,017	8,095	6,643
Other %	59.7%	60.4%	60.2%	61.4%	52.1%
Latino	2,317	2,302	2,609	1,867	2,287
Latino %	16.7%	16.7%	19.6%	14.2%	17.9%
Asian	2,937	2,882	2,401	2,897	3,509
Asian %	21.1%	20.9%	18.0%	22.0%	27.5%
Black	349	278	297	330	317
Black %	2.5%	2.0%	2.2%	2.5%	2.5%

Citizen Voting Age Population (CVAP)

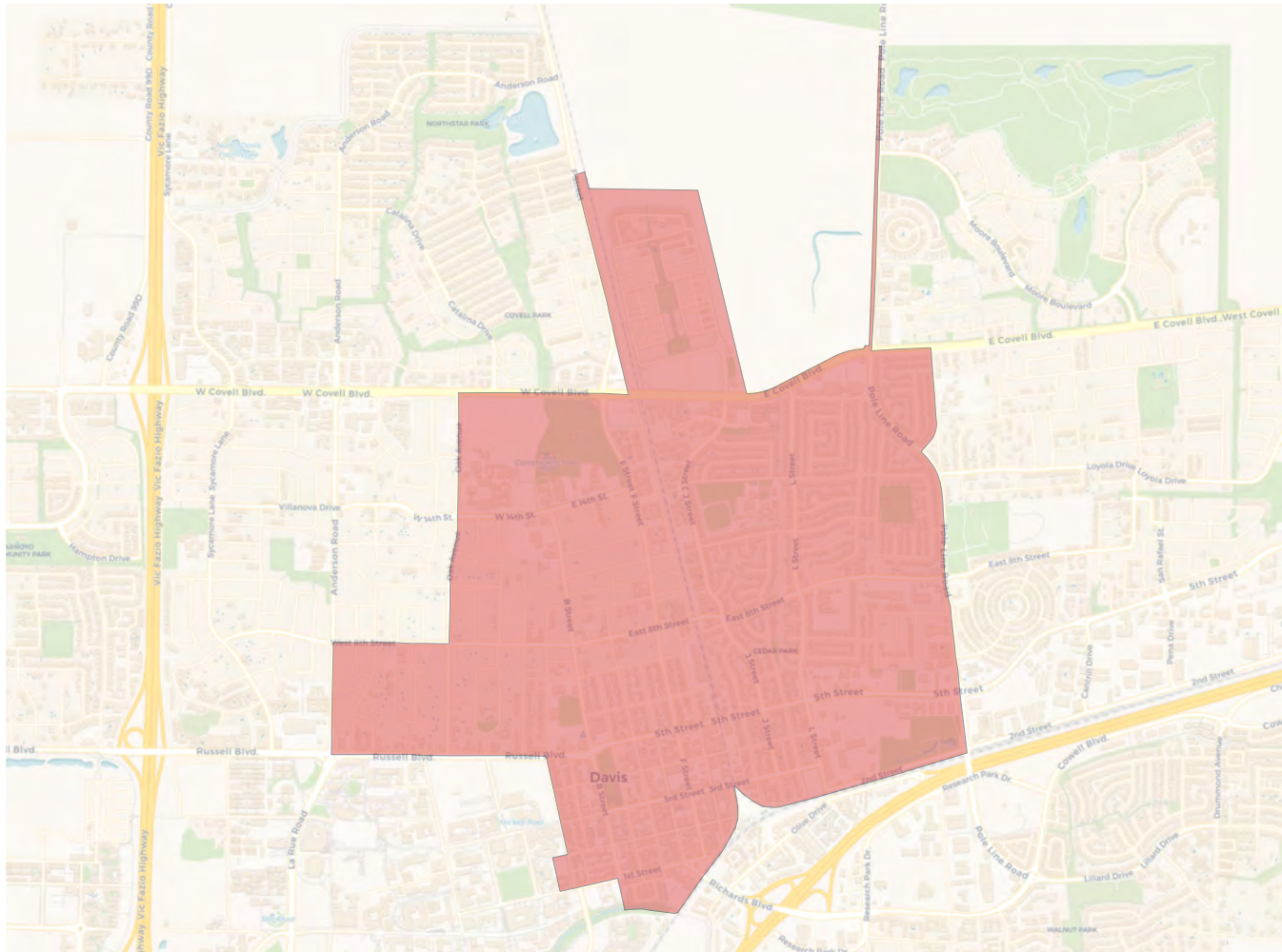
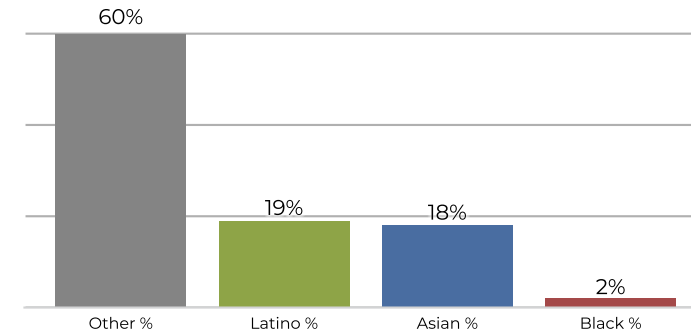
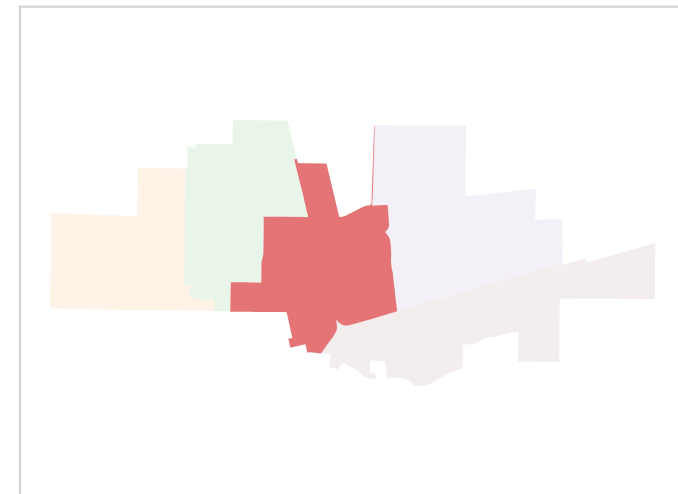
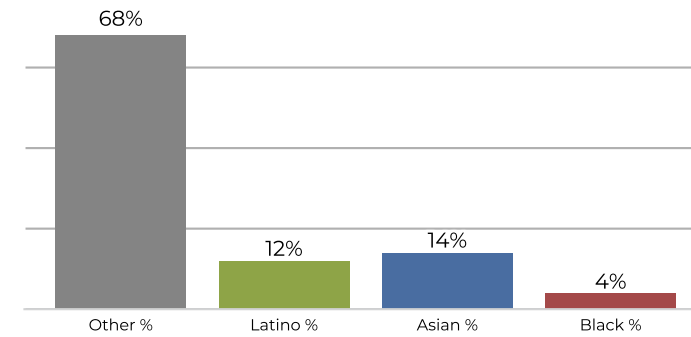
	1	2	3	4	5
Total CVAP	11,264	11,986	9,685	8,614	8,816
Other CVAP	7,472	7,769	6,641	6,185	5,284
Other CVAP %	66.3%	64.8%	68.6%	71.8%	59.9%
Latino CVAP	1,698	1,438	1,209	794	1,366
Latino CVAP %	15.1%	12.0%	12.5%	9.2%	15.5%
Asian CVAP	1,975	2,564	1,357	1,451	2,010
Asian CVAP %	17.5%	21.4%	14.0%	16.8%	22.8%
Black CVAP	119	215	478	184	156
Black CVAP %	1.1%	1.8%	4.9%	2.1%	1.8%

District 1

2020 Census

Citizen Voting Age Population


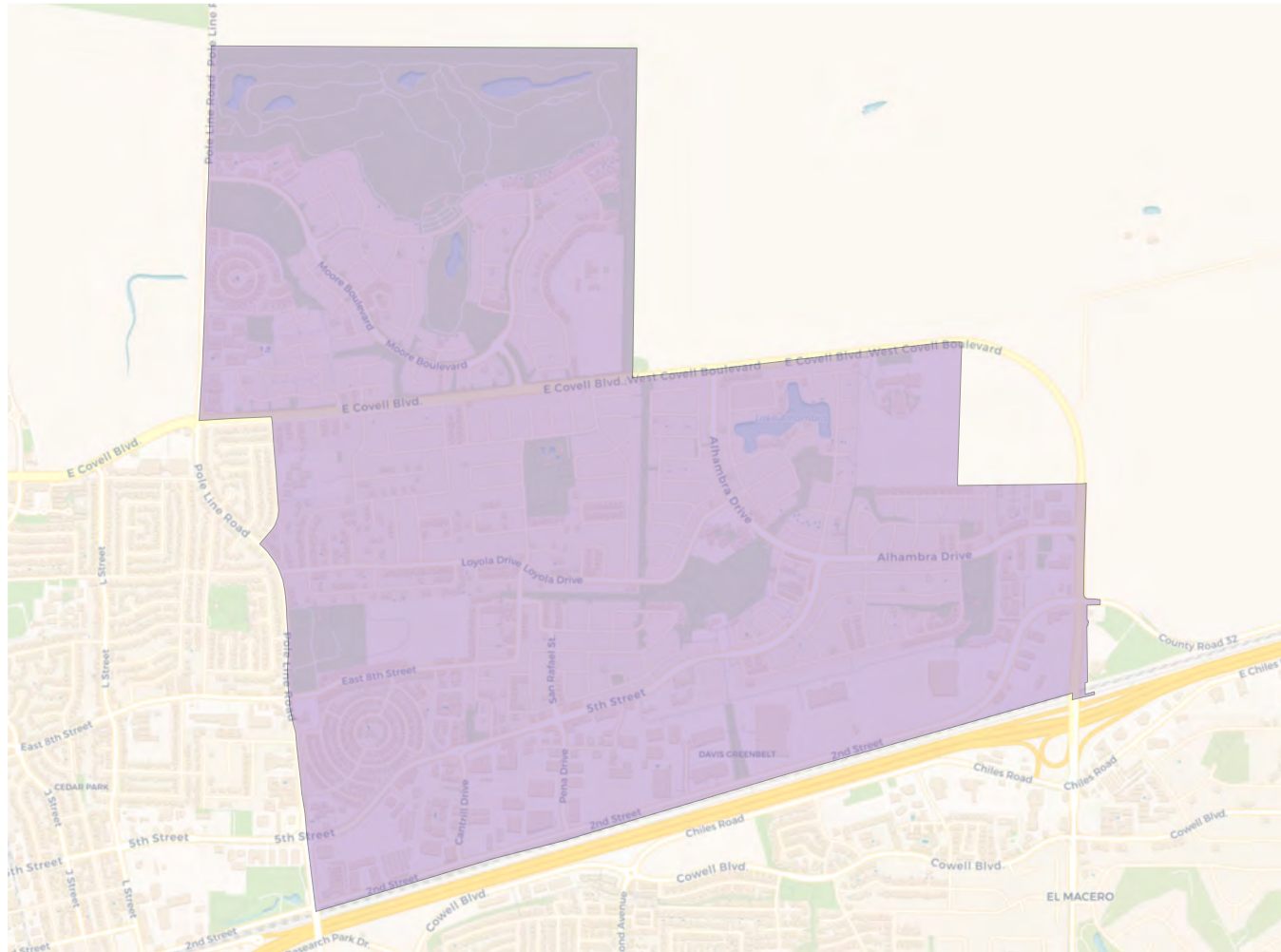
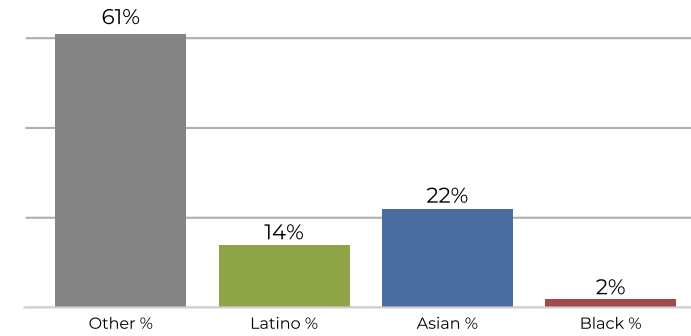
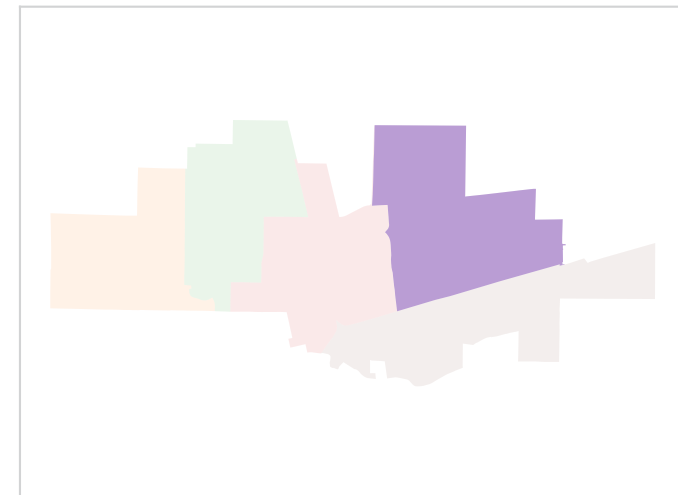
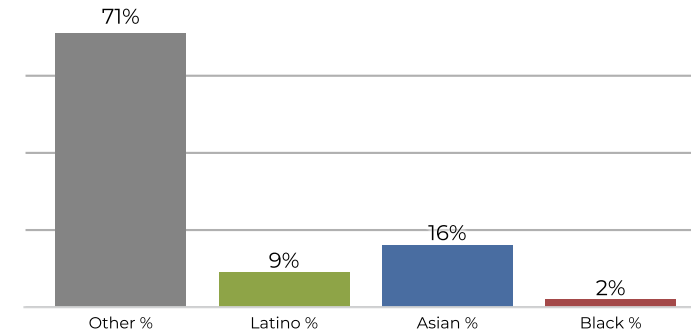
Population	Deviation	Deviation %	Other	Other %	Latino	Latino %	Asian	Asian %	Black	Black %
13,394	4	0.0%	8,041	60.0%	2,195	16.4%	2,818	21.0%	340	2.5%
Total CVAP	Other CVAP	Other CVAP %	Latino CVAP	Latino CVAP %	Asian CVAP	Asian CVAP %	Black CVAP	Black CVAP %		
10,926	7,313	66.9%	1,633	14.9%	1,865	17.1%	115	1.1%		

District 2

2020 Census

Citizen Voting Age Population


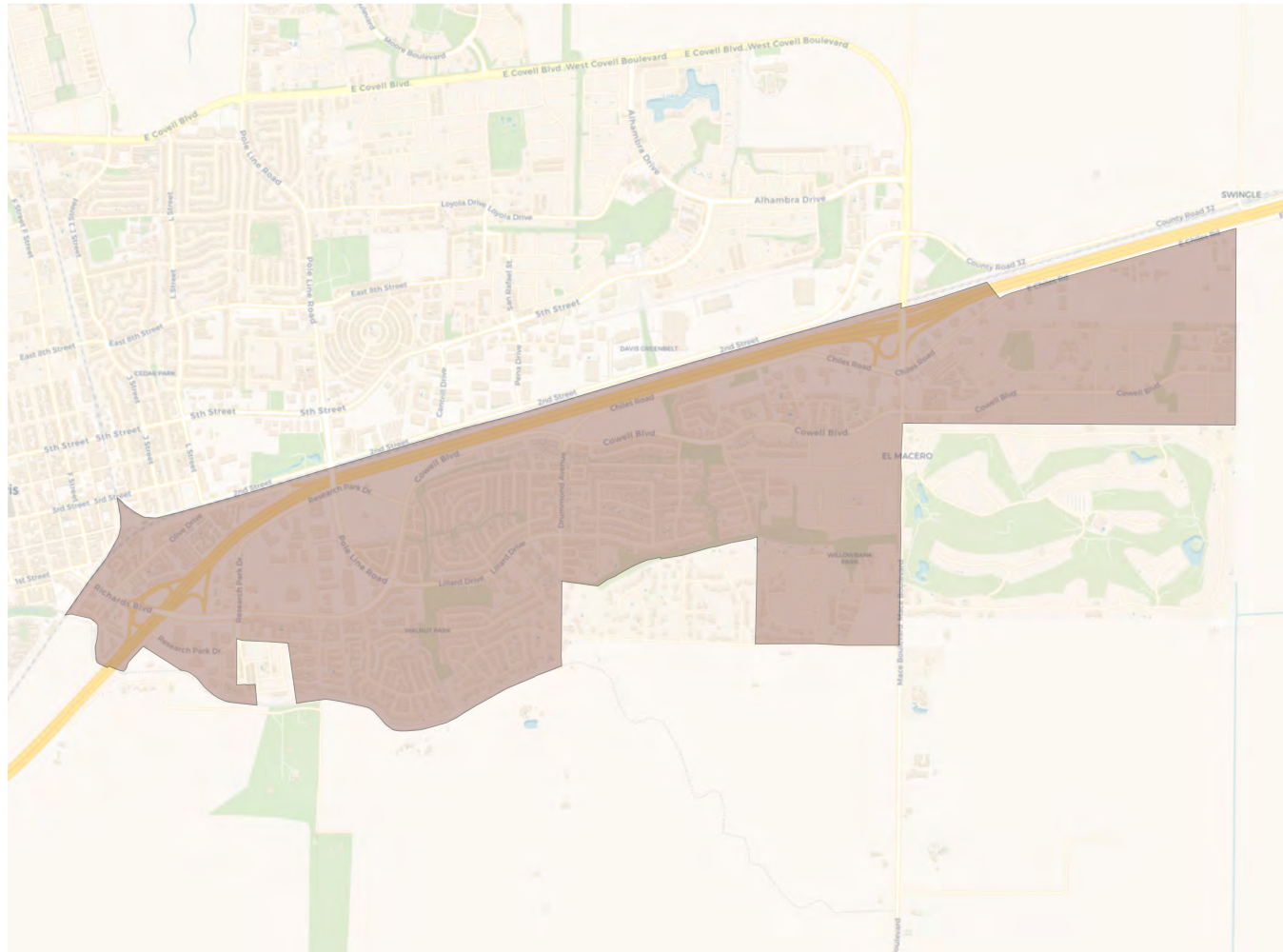
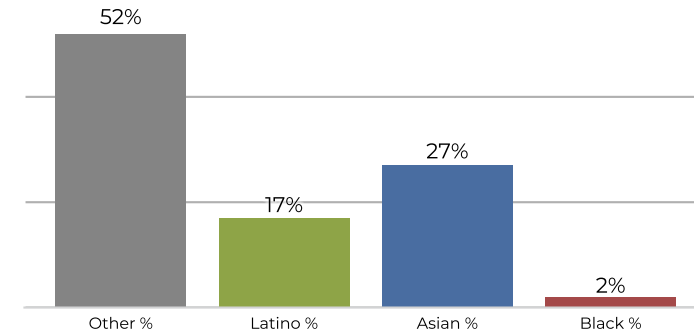
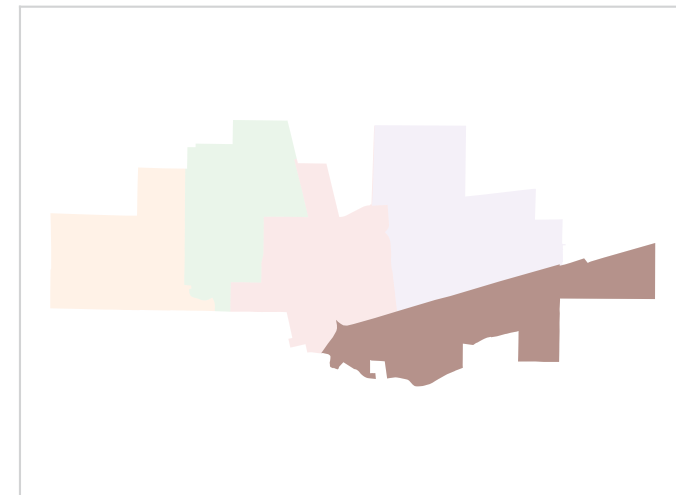
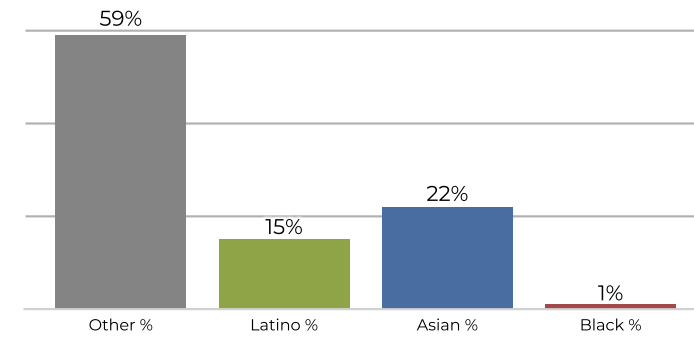
Population	Deviation	Deviation %	Other	Other %	Latino	Latino %	Asian	Asian %	Black	Black %
14,285	895	6.7%	8,573	60.0%	2,424	17.0%	3,001	21.0%	287	2.0%
Total CVAP	Other CVAP	Other CVAP %	Latino CVAP	Latino CVAP %	Asian CVAP	Asian CVAP %	Black CVAP	Black CVAP %		
12,324	7,928	64.3%	1,503	12.2%	2,674	21.7%	219	1.8%		

District 3

2020 Census

Citizen Voting Age Population


Population	Deviation	Deviation %	Other	Other %	Latino	Latino %	Asian	Asian %	Black	Black %
13,324	-66	-0.5%	8,017	60.2%	2,609	19.6%	2,401	18.0%	297	2.2%
Total CVAP	Other CVAP	Other CVAP %	Latino CVAP	Latino CVAP %	Asian CVAP	Asian CVAP %	Black CVAP	Black CVAP %		
9,685	6,641	68.6%	1,209	12.5%	1,357	14.0%	478	4.9%		

District 4

2020 Census

Citizen Voting Age Population


Population	Deviation	Deviation %	Other	Other %	Latino	Latino %	Asian	Asian %	Black	Black %
13,189	-201	-1.5%	8,095	61.4%	1,867	14.2%	2,897	22.0%	330	2.5%
Total CVAP	Other CVAP	Other CVAP %	Latino CVAP	Latino CVAP %	Asian CVAP	Asian CVAP %	Black CVAP	Black CVAP %		
8,614	6,185	71.8%	794	9.2%	1,451	16.8%	184	2.1%		

District 5

2020 Census

Citizen Voting Age Population


Population	Deviation	Deviation %	Other	Other %	Latino	Latino %	Asian	Asian %	Black	Black %
12,756	-634	-4.7%	6,643	52.1%	2,287	17.9%	3,509	27.5%	317	2.5%
Total CVAP	Other CVAP	Other CVAP %	Latino CVAP	Latino CVAP %	Asian CVAP	Asian CVAP %	Black CVAP	Black CVAP %		
8,816	5,284	59.9%	1,366	15.5%	2,010	22.8%	156	1.8%		