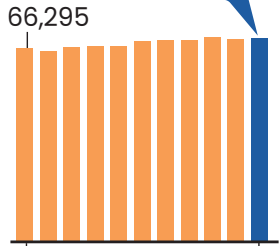


Population
69,295



Jan. 2011 Jan. 2021
Source: California Department of Finance

Davis covers
10.5
square miles

\$69,379
Median household
income, 2020

Source: U.S. Census

\$815,000
Median home sales
price, 2021

Source: HDL Coren and Cone

4.2%
Unemployment
Rate, June 2021

Source: California Employment
Development Department

3.21%
Increase in 2021
property assessed
valuation

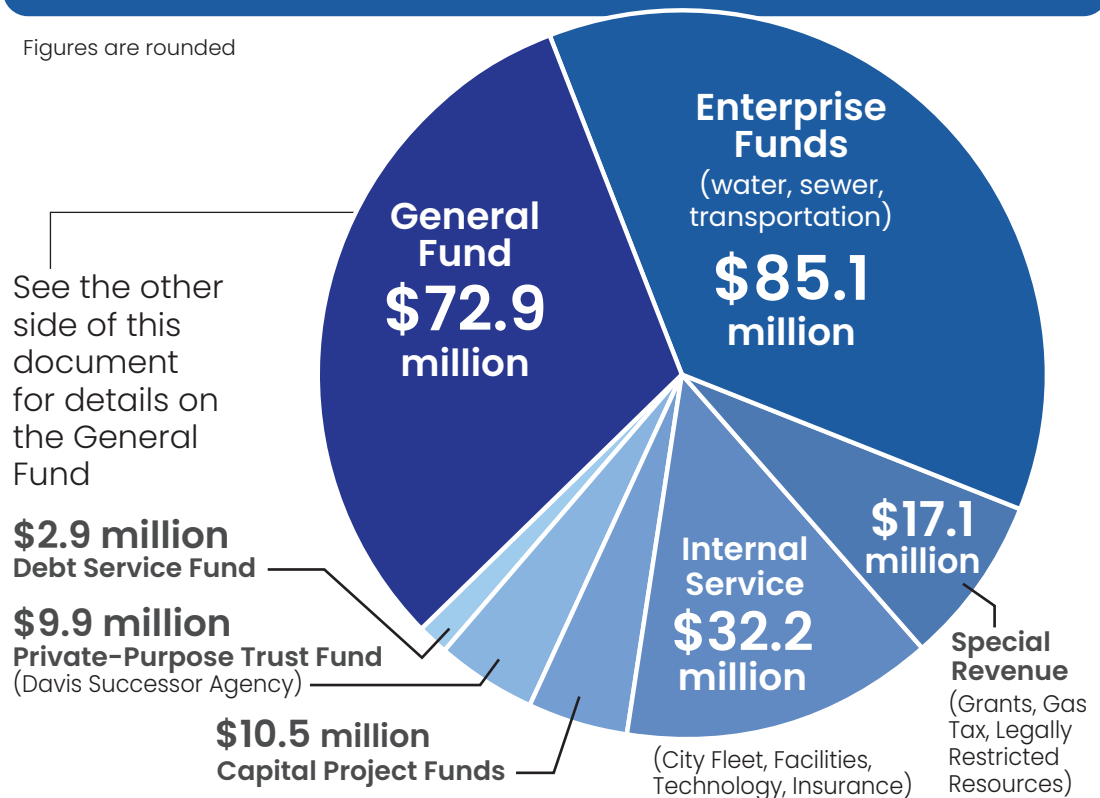
\$19.73
million

Local allocations in
the American Rescue
Plan Act 2021

FY 2021/22 CITYWIDE TOTAL

EXPENDITURES \$230.6 MILLION

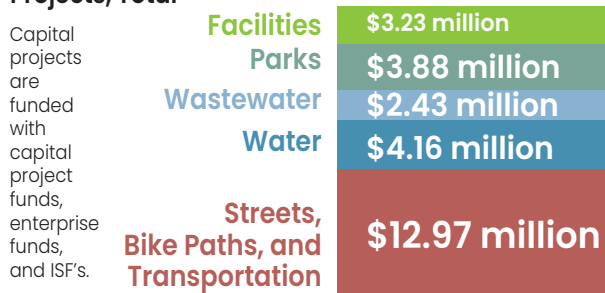
Figures are rounded



See the other side of this document for details on the General Fund

CITYWIDE INFRASTRUCTURE (figures rounded)

Capital Improvement Projects, Total \$26.67 million



Capital projects are funded with capital project funds, enterprise funds, and ISF's.

Notable Capital Improvement Projects:

- Parks Sports Courts Surface Rehabilitation and Replacement
- Bike Path, Slurry Seal, and Pavement Rehab Project (2021)

• Mace Blvd Phase 2

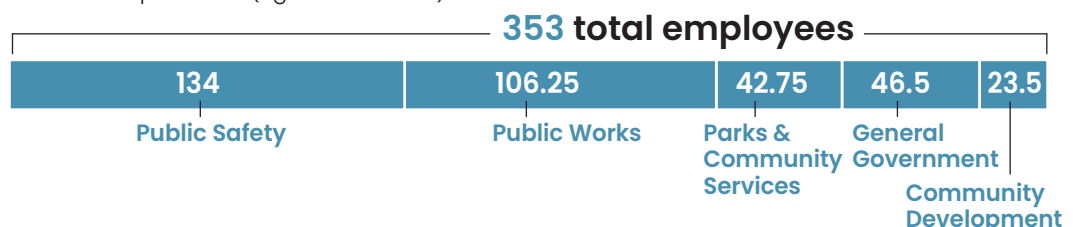
• Phase I: Sewage Lift Station Rehabilitation No. 4

• Pole Line Road/Olive Drive Connection

FY 2021-22

CITY EMPLOYEES BY FUNCTION, FY 2022

Full-time equivalents (figures rounded)



What the City takes care of

179

miles of streets

118 miles of bike lanes

67 traffic signal intersections

4,533 street and pathway lights

127 stormwater lines

70,119 tons of trash, recycle, organic waste

399 acres of active/ developed park lands

1,500+ potholes repaired

38,465 City trees

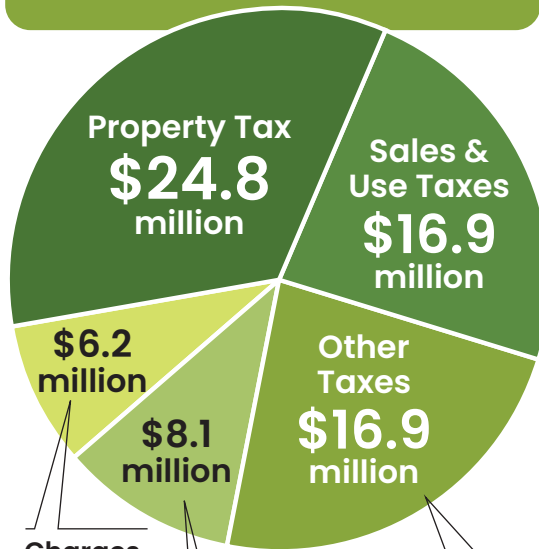
17,050 Utility accounts

44,138 Police calls for service

5,863 Fire calls for service

GENERAL FUND FY 2021/22

REVENUE \$72.9 MILLION



Charges for Service

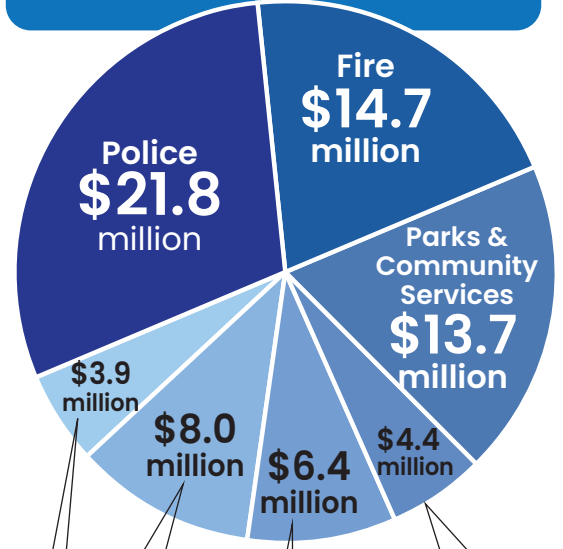
All Other Revenue
(\$7.5 million Includes fines & forfeitures, intergovernmental, rents, leases, interest. Also includes \$0.6 million fund balances and reserves)

(Including Business License Tax, Transit Occupancy Tax and Park Maintenance Tax)

Figures are rounded

GENERAL FUND FY 2021/22

EXPENDITURES \$72.9 MILLION

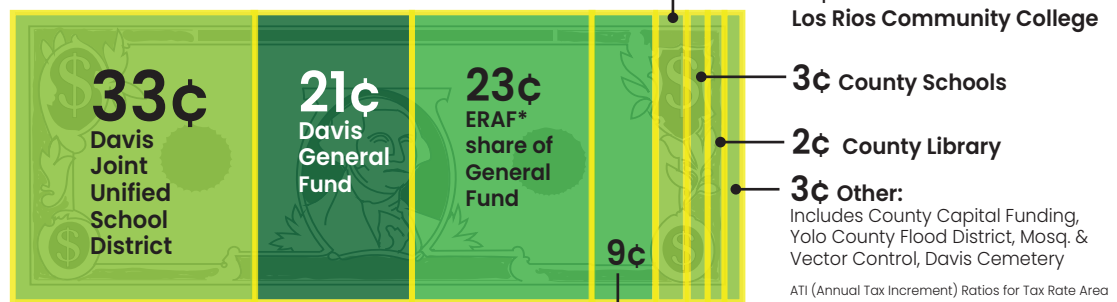


Community Development

Figures are rounded

General Government
(Includes City Council, City Manager, Finance, HR, IT)

Where does your property tax dollar go?



*Educational Revenue Augmentation Funds

Yolo County General Fund

ATI (Annual Tax Increment) Ratios for Tax Rate Area 001-000, Excluding Redevelopment Factors & Additional Debt Service
Figures are rounded

Why does my \$10 purchase cost me \$10.83?

83¢ is collected in sales tax. Most goes to the state. 20¢ goes directly to the City of Davis.



83¢ Total sales tax

60¢ State

20¢ City of Davis

3¢ County