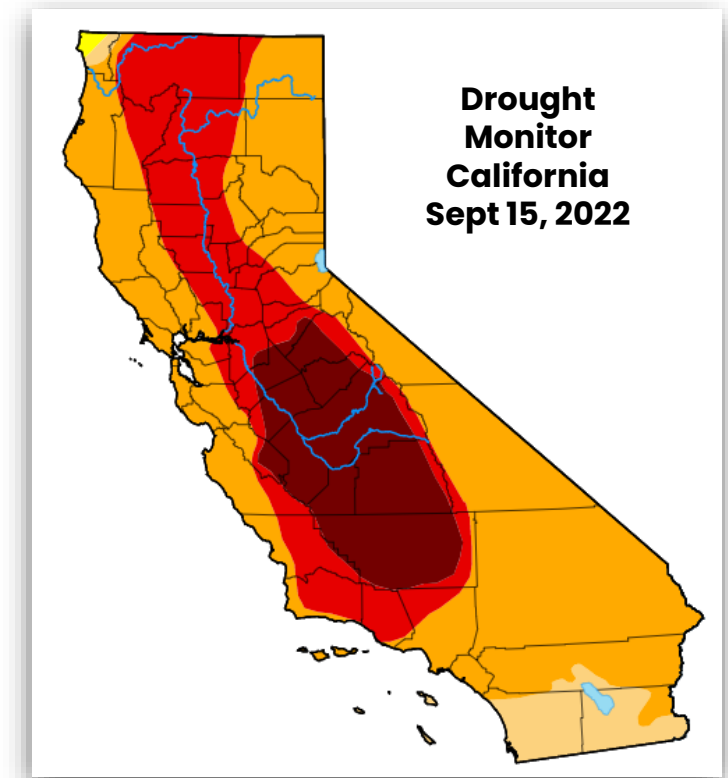


City of Davis

State Action on Water Conservation and Prioritizing Trees in Drought

Drought Conditions Persist

- State in a third year of drought
- Yolo County in extreme drought (U.S. Drought Monitor)
- March 28 - Governor issued Executive Order N-7-22
 - Required suppliers to move to a Shortage Level 2 of their Water Shortage Contingency Plan
 - Required submittal of Annual Water Supply and Demand Assessments
 - Included a prohibition on the irrigation of non-functional turf for Commercial, Industrial and Institutional properties
- Reductions in water availability state-wide



Water Conservation Update

- City Council implemented Shortage Level 2 of the Water Shortage Contingency Plan on May 24, 2022
- State and City saw increased water use January – April 2022 (compared to 2020)
- City saw decreases in water usage over the summer months
 - Summer 2022 (June–Aug.) use for Davis decreased 8.7% from 2020
 - July 2021 – August 2022 water usage has decreased by 5.34% compared to 2020
- City drought outreach campaign in summer 2022 “There’s No Doubt – We’re In a Drought”

**There’s No Doubt
We’re In a Drought**

You Can Help!

AquaHawk
ALERTING! 

Online Water-Use Portal

Track your water-usage



**There’s No Doubt
We’re In a Drought**

You Can Help!



Prioritize and Protect Trees



CII Non-Functional Turf Ban

- State-wide ban on irrigation of decorative or non-functional turf with potable water in commercial, industrial and institutional settings
- Regulation applies to turf (mowed grass) that is ornamental and not otherwise used for recreation
- The irrigation ban does not apply to:
 - residential lawns
 - school fields
 - sports fields
 - areas regularly used for civic or community events

What is the definition of “turf”?

The State defines turf as “a ground cover surface of mowed grass.”

What is “non-functional turf”?

Non-functional turf is mowed grass that is ornamental and not otherwise used for human recreation purposes.

Are there any exceptions to the non-functional turf irrigation ban?

The ban does not apply to residential lawns or any turf that is regularly used for human recreational purposes, such as community spaces, or sports fields and other turf spaces used for recreation or events. The regulation does not ban the irrigation of trees or other non-turf plantings.

State FAQs

Non-Functional Turf Ban

Does the regulation affect trees? Do urban trees need to be watered?

- The regulation does not restrict the watering of trees, just turf.
- The Board urges people to continue to water trees, even while reducing or stopping the irrigation of turf.
- Trees that are just getting established may need to be watered more frequently, including hand watering.
- The regulation allows continued irrigation of trees even if turf, such as turf under trees, will receive water.
- Visit the [Save Our Trees section within SaveOurWater.com](#)



Resources for Turf Conversion

- Landscape irrigation can account for up to 65% of water use in the Sacramento Valley.
- Converting non-functional turf to water-wise landscaping can reduce water use and potentially lower your water bill.
- When converting non-functional turf, be mindful of trees being supported by existing irrigation.
- If you have trees in otherwise non-functional turf that is irrigated by sprinklers, consider converting your irrigation to drip irrigation.
 - Drip irrigation applies water slowly onto the soil, allowing the water to infiltrate into the root zone of the tree to ensure it continues to receive water.
 - Learn more about converting to drip irrigation on the [irrigation page](#)



Turf Conversion Plans

- City of Woodland/Yolo Resource Conservation District water-wise landscape plans with turf alternatives for mow strips.
- Plans include planting lay-outs and irrigation installation and timing instructions:
 - [California Natives \(plants native to California\)](#)
 - [California Native Meadow \(grass-like groundcover and native wildflowers\)](#)
 - [Valley-Wise Plan \(native and non-native plants adapted to the Woodland/Davis area\)](#)
 - [Saline Alkaline Soils Plan \(for soils with a high pH\)](#)

PLANTING PLAN for Woodland Water-Wise Mow Strips

VALLEY-WISE



A DROUGHT-TOLERANT LAWN ALTERNATIVE of native and non-native plants well-adapted to Woodland and surrounding areas.

Before you start: Completely remove turf grass, taking care not to damage tree roots. Work compost into the soil if needed. Lay down weed barrier fabric and staple in place.

Ready to plant: Lay out plants according to the planting layout below. Plant by cutting an x into the landscape fabric twice the size of the pot. Dig the hole twice as wide and as deep as the pot and backfill making sure the base of the plant's stems or trunk is level with the ground. Tamp the soil around the plants and water in with a hose.

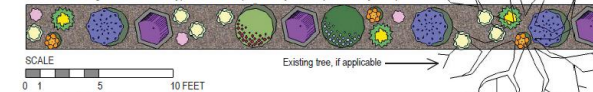
Install the drip irrigation: Lay out tubing and staple down. Add 1 emitter for each 1-gallon plant and 2 emitters for 2-gallon plants. Existing trees may benefit from 2 or more emitters around the drip line of the tree, or none at all depending on the type of tree and how well established it is. Add emitters, if necessary, as plants grow. A separate irrigation valve is recommended for the mow strip. Drip systems require a pressure regulator. If necessary, to make changes to existing irrigation, consult with a landscape contractor licensed by the State of California.

Mulch: Add a layer of mulch (e.g. 2 to 4-inch-thick shredded or chipped bark, walnut hulls, decomposed granite).

Program irrigation schedule: For 1-GPH (gallon per hour) drip emitters: YEAR ONE: Water once a week for 1 hour; YEAR TWO: Water once every two weeks for 1 hour; YEAR THREE: Water once or twice a month for 1 hour. Adjust as needed. Actual plant water need will vary. This schedule is a general recommendation. Modify frequency and run time, as needed, for optimal plant health.

PLANTING LAYOUT

40 x 3 foot design is based on a typical mow strip, but may be adapted to fit your space.



SCALE
0 5 10 FEET

City of Woodland
Environmental Services
(916) 661-2850
www.cityofwoodland.org

Plan prepared by:
YOLO COUNTY
RCD
Yolo County Resource Conservation District

See Master Plant List for Woodland Water-Wise Mow Strips for height and width, sun requirement, and other useful plant characteristics.
For more information on water-wise landscaping, please visit: www.cityofwoodland.org/waterconservation

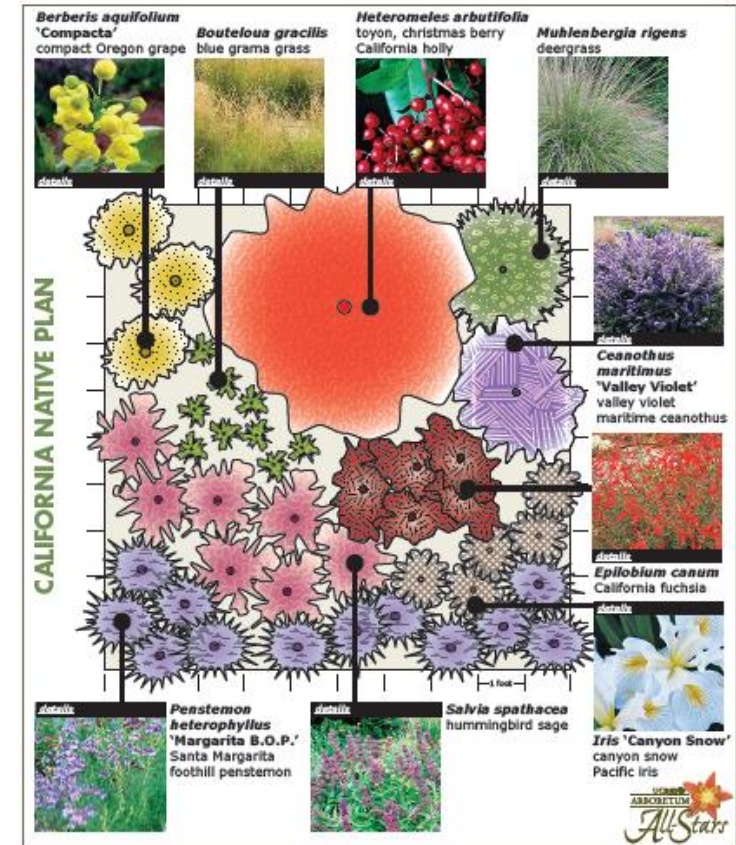
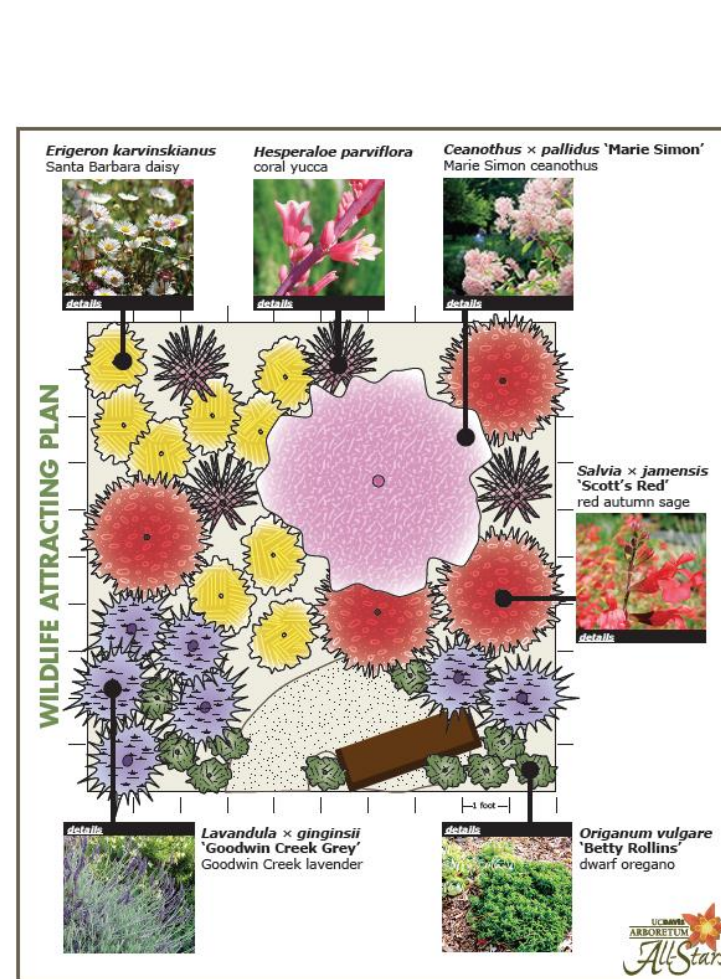
- x3 Catmint- *Nepeta cataria*
 - x3 Spanish Lavender- *Lavendula stoechas*
 - x3 California Poppy- *Eschscholzia californica* N
 - x1 Autumn Sage- *Salvia greggii*
 - x7 Mexican Fleabane- *Erigeron karvinskianus* N
 - x3 Cape Balsam- *Bulbine frutescens*
 - x3 Pinchusion Flower- *Scabiosa 'Butterfly Blue'*
 - x1 Dwarf Rosemary- *Rosmarinus officinalis*
- N = California native



Turf Conversion Plans

UC Davis Arboretum and Public Garden printable planting plans:

- [Low Maintenance Planting Plan](#)
- [California Native Planting Plan](#)
- [Wildlife Planting Plan](#)
- [Arboretum All-Star Planting Plan](#)



Prioritizing Trees in Drought

- Tree watering not limited under the water waste prohibitions or days per week irrigation restrictions
- Essential to water your trees during the hot, dry summer months
- Overhead spray – not a good option for tree watering
- Add mulch (3–5" layer) – not against tree trunk
- Information provided in Greener Davis outreach – social media, e-blasts, website, workshops

Prioritize and Protect Trees

Tree watering is not limited under the water waste prohibitions or days per week irrigation restrictions. Trees serve an important, functional purpose above and beyond ornamental landscaping, particularly with their vital role in the water cycle.

It is essential to water your trees during the hot, dry summer months. Overhead spray is not a good option for tree watering; deep watering of trees is preferable. Providing a 3-5-inch mulch layer under the tree canopy helps to retain soil moisture in the spring and summer.

If your tree is still young and staked:

- Give it 10 gallons of water once a week
- Once the roots are established and staking is no longer needed, weekly water is no longer necessary.

If you have a mature tree:


- Supplemental water is only needed once a month during hot and dry weather, twice a month during prolonged heat waves.
- Drip or flood irrigation over the critical root zone is best.
- Avoid overhead spray, if possible. If overhead spray is the only option, do not allow water to spray the tree trunk!

While deep watering a tree might sound like a lot of water, it is about the equivalent of 1-2 CCF over the year, or an additional \$5-10 per year on your residential utility bill.

More information on tree watering:

- [Video: Watering mature trees](#)
- [Video: Watering young trees](#)
- [Drought and Trees](#)

Find more tips on caring for your trees at [City of Davis Urban Forestry](#) and [Tree Davis](#).

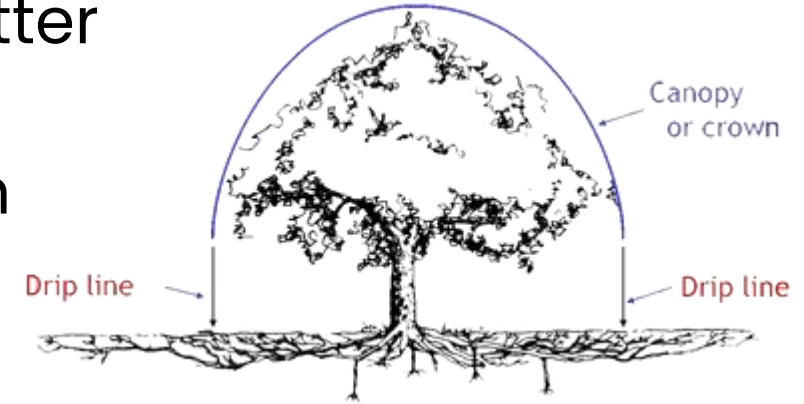


Young Tree Watering

- Young, established trees are trees that no longer have support stakes
- Require infrequent deep watering for root development and good tree growth.
 - Drip irrigation is best to apply water slowly onto the soil, allowing the water to infiltrate into the root zone
 - Good starting point – approximately 40 gallons of water to infiltrate per watering
- A good system is calibrated to adapt to soil, weather conditions, and tree type prior to installing and irrigating.

Mature Tree Watering

- Mature trees may only require watering in the hotter summer months.
- Water should be applied under the drip line when possible.
- Trees should be watered so the soil is at field capacity (the water remaining in soil after it has been thoroughly saturated and allowed to drain freely).
- During extended dry periods, it is important to keep trees properly irrigated to preserve the City's urban forest while saving water.



Contact Information

Dawn Calciano

Conservation Coordinator

dcalciano@cityofdavis.org

530-747-8282

Charles Murphy

Urban Forestry Manager

cmurphy@cityofdavis.org

530-757-5686

www.CityofDavis.org

www.SaveDavisWater.org

