

Exterior Surface Cleaning

Best Management Practice

Only use potable water for cleaning sidewalks and other surfaces if required for health and safety purposes.

If using water is necessary to clean surfaces, the water must be soap-free and chemical-free in order to be discharged to the stormdrain system. The area(s) must have been pre-swept and free from visible significant pollutants.



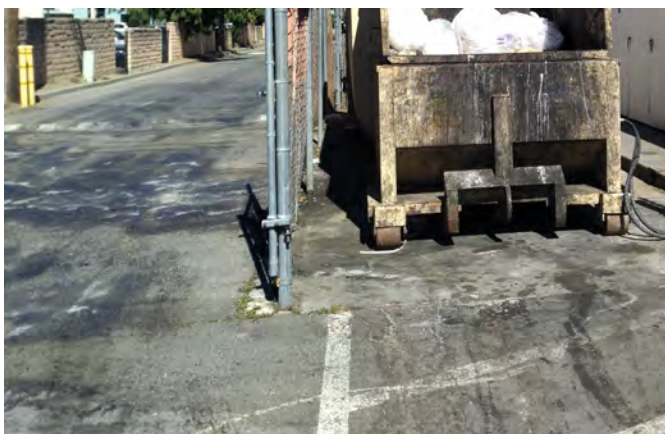
Background

These exceptions are only available when discharges would not violate water quality standards and landscape disposal is not available.



Do not allow dirty wash water from cleaning exterior surfaces to flow into stormdrains. Dirty wash water must be collected and disposed of into a sanitary sewer drain.

Water use restrictions limit the options for cleaning of surfaces with water except as required for health and safety purposes. For more information, please see the water conservation sections of this binder.



Discolored surfaces usually indicate some kind of pollutants. If you see discolored pavement, do NOT wash these areas off without ensuring that the wash water will go into a sanitary sewer instead of a stormdrain.

