

# City of Davis Trees

An integral part of the City of Davis community canopy

Most single-family properties in Davis have one or more **City trees** planted in the front yard of the property. **City trees** are trees that are planted and/or maintained by the City that are adjacent to a street or within a city easement or right-of-way on private property. In residential areas, trees planted, maintained and/or assumed by the City of Davis within the ten-foot tree planting and maintenance easement or planted in the road right-of-way may be City trees.

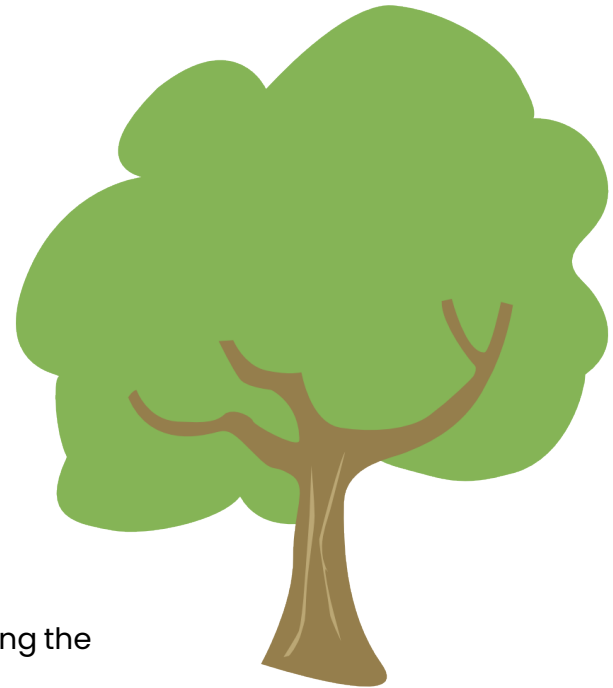
The City has regulations to protect City trees. The planting, pruning, removal, or any modification of the surrounding areas around these trees, may require a permit or City review, depending on the nature of the proposed work.



**It is the responsibility of property owners to be aware of tree-related regulations before engaging in any activity that may impact existing trees.**

## Things to know about landscaping around City trees:

- The roots and canopies of trees do not mirror each other, in fact, tree roots can extend 2-3 times farther than the canopy above ground! This needs to be considered when looking to make changes to landscapes around City trees.
- Property owners are welcome to landscape over the root zone of their City tree, as long as the vegetation and materials used do not harm the tree. Consider keeping grass away from the base of the tree as it competes for water and nutrients. This will also help avoid mechanical damage from lawn equipment, particularly for newly planted trees.
- While the use of natural mulch, such as wood chips, around trees is encouraged to promote tree health, weed cloth and rock ground covers are discouraged around trees. Rocks and weed cloth impede air and water flow to tree roots and cause the soil to heat up—killing microorganisms in the soil and harming the tree.
- Tree roots over 2 inches in diameter may not be pruned without an inspection from a City Arborist to ensure that pruning the root will not cause harm to the tree.
- Altering the grading of the landscaping in such a way that would damage the tree is also prohibited.



## Caring for Your Trees

Trees need proper pruning, mulch and water to grow and remain healthy. Please see the back of this flyer for information on caring for all the trees on your property.

## Tree Questions?

To find out if a particular tree is a City tree, or for any other tree-related questions, please contact the Urban Forestry Division at 530-757-5633 or [CityTrees@CityofDavis.org](mailto:CityTrees@CityofDavis.org)



**Public Works Utilities and Operations Urban Forestry**  
[CityTrees@CityofDavis.org](mailto:CityTrees@CityofDavis.org) | 530-757-5633  
[Trees.CityofDavis.org](http://Trees.CityofDavis.org)



@GreenerDavis