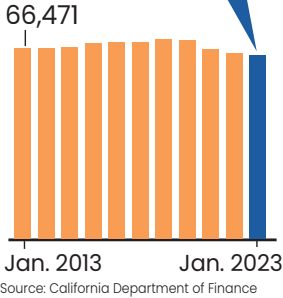


Population
64,097



Davis covers
10.5
square miles

\$81,231
Median household
income, 2023
Source: U.S. Census

\$870,000
Median home sales
price, 2023
Source: HDL Coren and Cone

3.5%
Unemployment
Rate, Sept. 2023
Source: California Employment
Development Department

6.07%
Increase in 2023
property assessed
valuation

**\$6.14
million**
Grants Received
in FY 2022-2023

CITYWIDE TOTAL

EXPENDITURES \$250.5 MILLION

Figures are rounded

See the other
side of this
document
for details on
the General
Fund

\$3.0 million
Debt Service Fund

\$1.9 million
Private-Purpose Trust Fund
(Davis Successor Agency)

\$13.3 million
Capital Project Funds

**General
Fund
\$83.9
million**

**Enterprise
Funds
(water, sewer,
transportation)
\$96.6
million**

**Internal
Service
Funds
\$35.5
million**

**\$16.3
million**

**Special
Revenue
(Grants, Gas
Tax, Legally
Restricted
Resources)**

(City Fleet, Facilities,
Technology, Insurance)

CITYWIDE INFRASTRUCTURE (figures rounded)

**Capital Improvement
Projects, Total \$28.5 million**

Capital
projects
are
funded
with
capital
project
funds,
enterprise
funds
and
Internal
Service
Funds



Notable Capital Improvement Projects:

- Parks Sports Courts Surface Rehabilitation and Replacement
- Storm Water Infrastructure Replacement
- Pavement Maintenance 2022-2023 to 2023-2024
- Bike Path, Slurry Seal and Pavement Rehab Project (2023)
- Wastewater & Water Main Rehabilitation
- Central Park Revitalization

CITY EMPLOYEES BY FUNCTION

Full-time equivalents (figures rounded)

376.25 total employees



What the City takes care of

179

miles of streets

110 miles of bike lanes

4,533 street and pathway lights

74,235 tons of trash, recycle, organic waste

485 acres of active/developed park lands

500+ potholes repaired

40,018 City trees

17,177 Utility accounts

1:1,086 Police officer per citizens

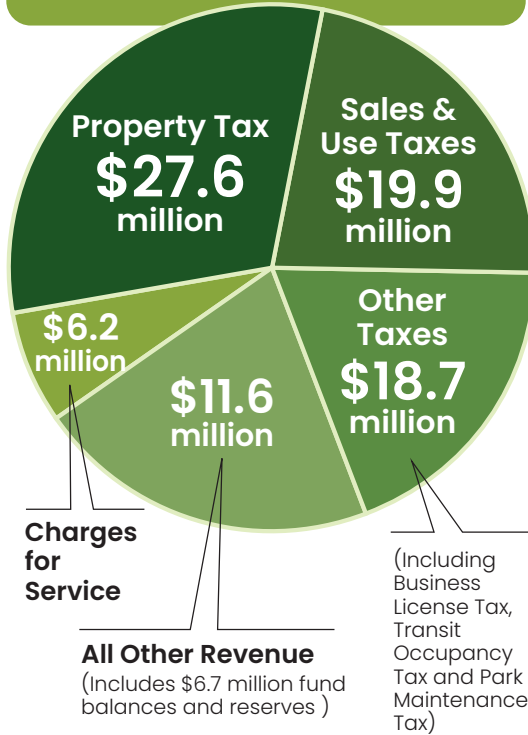
1:1,393 Firefighter per citizens

51,455 Police calls for service

6,714 Fire calls for service

GENERAL FUND

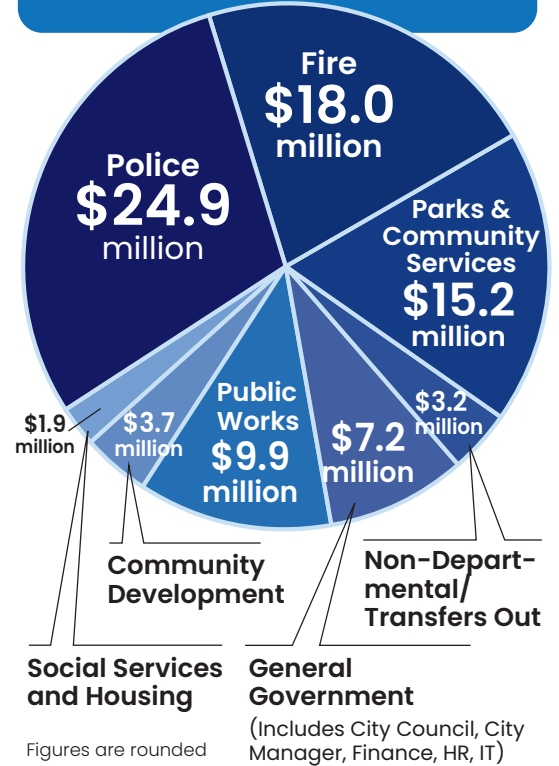
REVENUE
\$84 MILLION



Figures are rounded

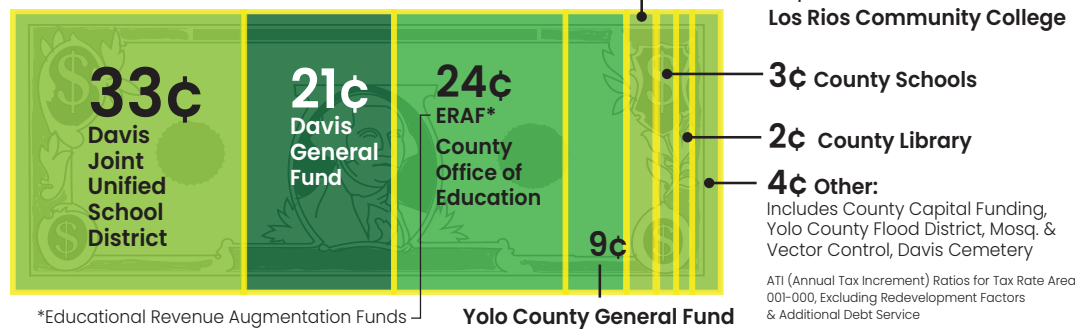
GENERAL FUND

EXPENDITURES
\$84 MILLION



Figures are rounded

Where does your property tax dollar go?



Why does my \$10 purchase cost me \$10.83?

83¢ is collected in sales tax. Most goes to the state. 20¢ goes directly to the City of Davis.

