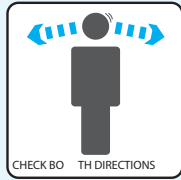


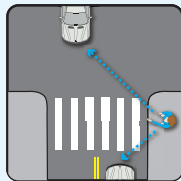


Walk Smart!



Look Before You Cross. Look left, right, and left again before crossing a street or look over your shoulder for turning cars, especially at intersections.

Make Eye Contact. Don't assume that drivers see you. Make eye contact before you cross the street.



Use the Crosswalk. Cross at corners or at a marked crosswalk. This is where drivers expect to see you.

Follow the Rules. Follow directions from crossing guards.



Be Visible. Walk where cars and bikes can see you. Wear bright clothes, and use lights and reflectors when it is dark outside.

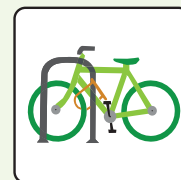


Bike Smart!



Wear a Helmet. It's the law. Helmets should fit snugly, sit level on your head, and always be buckled firmly under your chin.

Ride with Traffic. Ride on the right, in the same direction of traffic. Follow all signs and signals.



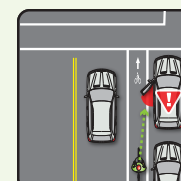
Share the Path. Pass walkers carefully on paths. Ring your bell or call "on your left" before passing.

Lock Your Bike. Always lock your bike frame and front wheel to the bike rack to prevent theft.



Make Eye Contact. Don't assume that drivers see you, especially when entering or crossing a street. Make eye contact before you cross, even if it is your turn.

Be Alert. If biking on the street, watch for opening car doors and cars turning across your path.



Be Visible. Ride where cars can see you. Wear bright clothes, and use lights and reflectors when it is dark outside.

Be Predictable. Ride in a straight line and always signal your moves to others.

Davis Suggested Routes to School

Davis is one of the easiest places in the country to walk and bike. We're lucky to have flat terrain, nice weather, and great bicycling and walking routes. Walking or biking establishes a healthy habit that can last a lifetime, and kids and adults who walk or ride to school can enjoy:

- A daily dose of physical activity
- Healthy target body weight
- Arriving at school attentive and ready to learn
- Improved test scores and better school performance
- Lower rates of depression and anxiety
- Traveling to school in a social and FUN way!

Get Involved!

Here are some ways you can help promote active transportation in Davis:

- Plan your walking or biking route with your student.
- Form or join a walking school bus or bike train. Walking school buses and bike trains are groups of students who walk or bike together to school with a parent or adult volunteer.
- Be a good role model by practicing good walking and biking behaviors. Students learn from watching what older people do, so follow traffic safety rules and set a great example.
- Volunteer! Your school has many events and opportunities. Contact your PTA or join the Davis Bicycles Schools Committee.

Learn More

Easy Steps to Properly Fit a Bicycle Helmet
<http://street-smarts.cityofdavis.org/resources>

Bicycle, Pedestrian and Driver Safety Resources
<http://www.nhtsa.gov/Driving+Safety>

Davis Bicycles Schools Committee
<http://davisbicycles.org/Schools>

City of Davis Street Smarts Program
street-smarts.cityofdavis.org

Active4.me Scanning Program
www.active4.me

Davis Joint Unified School District
www.djUSD.net/saferoutes



Safe Routes to School Program
www.cityofdavis.org
530-757-5640
ridewalk@cityofdavis.org



Suggested Routes to

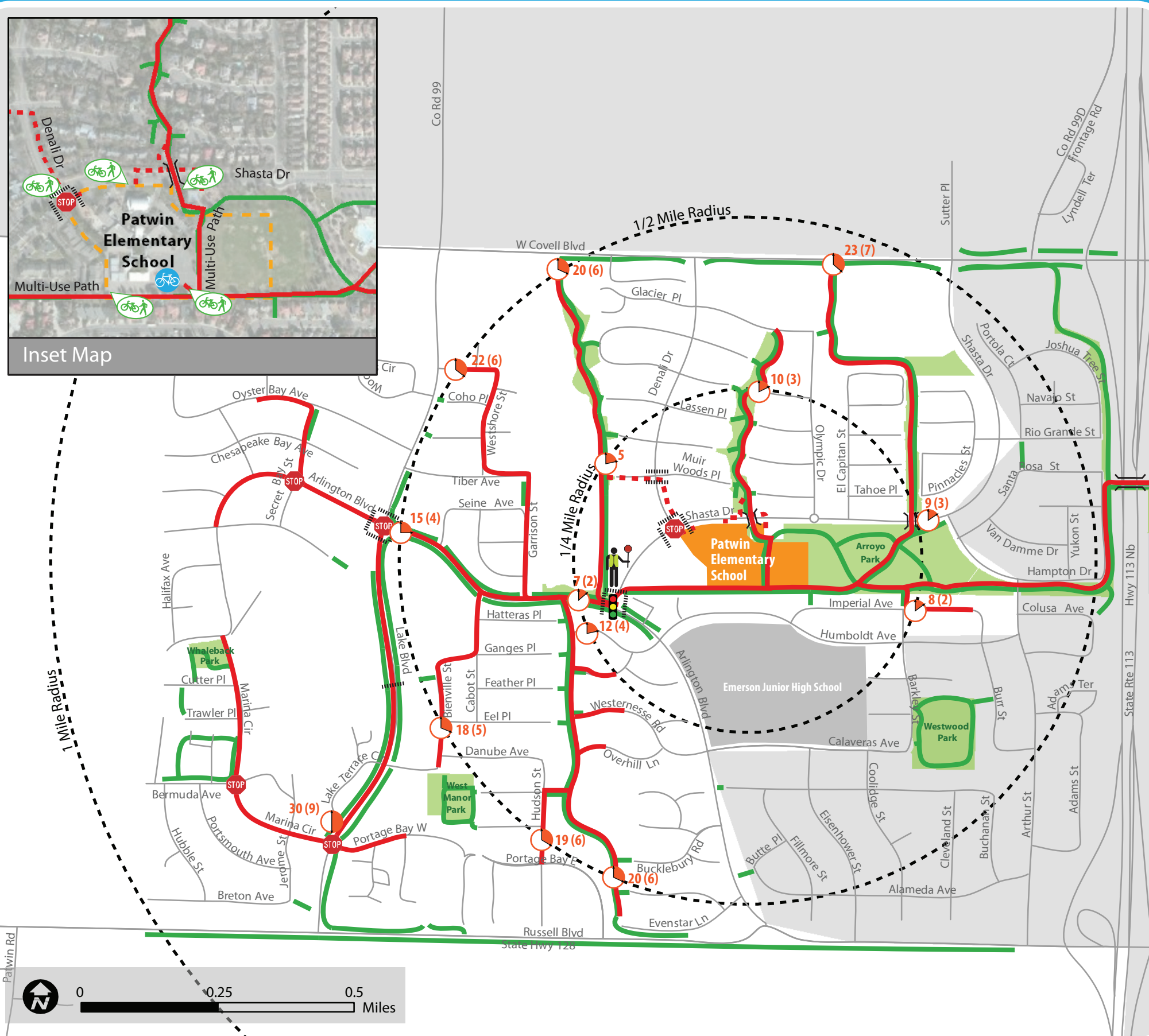
PATWIN ELEMENTARY SCHOOL



Cover design by 2407 Graphics • Photo courtesy of David Phillips • City of Davis Street Smarts Program • 2014

Safe Routes to School Program

Patwin Elementary: Suggested Walking and Biking Routes



How to Use This Map

This suggested route to school map is intended to encourage adults and students to consider walking or bicycling to school. Adults are responsible for choosing the most appropriate option based on their knowledge of the different routes and the skill level of their student.

This map includes suggested routes as well as the locations of traffic signals, crosswalks, four-way stops, crossing guards, and off-street paths.

To see routes and areas beyond this map please visit: <http://street-smarts.cityofdavis.org/>

Drop-Off and Pick-Up Information:

We strongly encourage students to walk or bike to school. If you plan to drive your child to school, student drop-off is in front of the MPR.

- Pull all the way forward, and ask your child to use the sidewalk.
- Do not drop-off or pick-up in the curved driveway in front of the school.
- Do not double park/park behind cars in parking lots, or park in special spots (handicapped, secretaries, principal, PTA).
- If you need to park and enter the school, you may park in the visitor lot in front of the school, or park across the street. The staff parking lot is to be used by staff only.
- U-Turns are illegal in front of Patwin. If you need to turn around, use the traffic circle at Shasta Drive and Olympic Drive or make a loop via Olympic, Glacier, and Denali.

White curbs are for 2-3 minute loading only. You may not leave your car. During pick-up many cars need access to this curb, and we may ask you to move along. Avoid this hassle by arriving 5-10 minutes after dismissal.

Green curbs are for 20-minute parking only. If you are dropping off a child, please accompany your student across the parking lot.

LEGEND

	Suggested Route (Walking and Biking)		Pedestrian and Bicycle Access		Enrollment Area
	Suggested Route (Walking Only)		Multi-use Path		Parks and Open Space
	Est. Walking Time (Biking Time)		Bicycle Parking		School
	Crossing Guard Location		Traffic Signal		
	Marked Crosswalk		All-Way Stop		
			Pedestrian & Bicycle Bridge or Tunnel		