



U.S. Department
of Transportation

Federal Highway
Administration

FHWA-HEP-05-054
DOT-VNTSC-FHWA-05-01

FHWA Roadway Construction Noise Model User's Guide

Final Report
January 2006



Prepared for
U.S. Department of Transportation
Federal Highway Administration
Office of Natural and Human Environment
Washington, DC 20590

Prepared by
U.S. Department of Transportation
Research and Innovative Technology Administration
John A. Volpe National Transportation Systems Center
Acoustics Facility
Cambridge, MA 02142

NOTICE

This document is disseminated under the sponsorship of the Department of Transportation in the interest of information exchange. The United States Government assumes no liability for its contents or use thereof. This report does not constitute a standard, specification, or regulation.

The United States Government does not endorse products or manufacturers. Trade or manufacturers' names appear herein solely because they are considered essential to the object of this document.

REPORT DOCUMENTATION PAGE

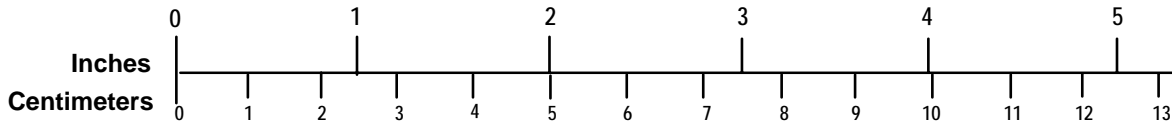
Form Approved
OMB No. 0704-0188

Public reporting burden for this collection of information is estimated to average 1 hour per response, including the time for reviewing instructions, searching existing data sources, gathering and maintaining the data needed, and completing and reviewing the collection of information. Send comments regarding this burden estimate or any other aspect of this collection of information, including suggestions for reducing this burden, to Washington Headquarters Services, Directorate for Information Operations and Reports, 1215 Jefferson Davis Highway, Suite 1204, Arlington, VA 22202-4302, and to the Office of Management and Budget, Paperwork Reduction Project (0704-0188), Washington, DC 20503.

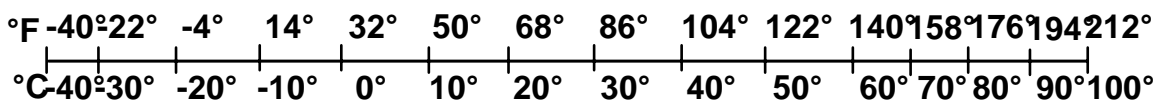
1. AGENCY USE ONLY (Leave blank)		2. REPORT DATE January 2006		3. REPORT TYPE AND DATES COVERED Final Report January 2004-January 2006	
4. TITLE AND SUBTITLE FHWA Roadway Construction Noise Model, Version 1.0 User's Guide				5. FUNDING NUMBERS HW-66/CS036	
6. AUTHOR(S) Reherman, Clay N. ⁽³⁾ , Rochat, Judith L. ⁽³⁾ , Thalheimer, Erich S. ⁽²⁾ , Lau, Michael C. ⁽³⁾ , Fleming, Gregg G. ⁽³⁾ , Ferroni, Mark ⁽¹⁾ , Corbisier, Christopher ⁽¹⁾					
7. PERFORMING ORGANIZATION NAME(S) AND ADDRESS(ES) U.S. Department of Transportation Research and Innovative Technology Administration John A. Volpe National Transportation Systems Center Environmental Measurement and Modeling Division, DTS-34 Cambridge, MA 02142				8. PERFORMING ORGANIZATION REPORT NUMBER DOT-VNTSC-FHWA-05-01	
9. SPONSORING/MONITORING AGENCY NAME(S) AND ADDRESS(ES) U.S. Department of Transportation Federal Highway Administration Office of Natural and Human Environment Washington, DC 20590				10. SPONSORING/MONITORING AGENCY REPORT NUMBER FHWA-HEP-05-054	
11. SUPPLEMENTARY NOTES (1) U.S. Department of Transportation Federal Highway Administration Office of Natural and Human Environment Washington, DC 20590 (2) Parsons Brinckerhoff Quade & Douglas Inc. 75 Arlington St. Boston, MA 02116 (3) U.S. Department of Transportation Research and Innovative Technology Administration John A. Volpe National Transportation Systems Center Environmental Measurement and Modeling Division Cambridge, MA 02142					
12a. DISTRIBUTION/AVAILABILITY STATEMENT This document is available to the public through the National Technical Information Service, Springfield, VA 22161				12b. DISTRIBUTION CODE	
13. ABSTRACT (Maximum 200 words) The Roadway Construction Noise Model (RCNM) is the Federal Highway Administration's (FHWA) national model for the prediction of construction noise. Due to the fact that construction is often conducted in close proximity to residences and businesses, construction noise must be controlled and monitored to avoid impacts on surrounding communities. In addition to community issues, excessive noise can threaten a construction projects' progress. Each project needs to balance the community's need for peace and quiet with the contractor's need to progress the work. During the Central Artery/Tunnel (CA/T) project in Boston, Massachusetts, the project's noise control program developed the Construction Noise Control Specification 721.560, the most comprehensive noise specification ever developed in the United States. As part of the CA/T project noise control program, a construction noise prediction spreadsheet was developed. Because the CA/T prediction tool can benefit other state and local governments, the FHWA developed the RCNM, which is based on the noise prediction calculations and equipment database used in the CA/T prediction spreadsheet. The RCNM provides a construction noise screening tool to easily predict construction noise levels and determine compliance with noise limits for a variety of construction noise projects of varying complexity.					
14. SUBJECT TERMS construction noise, noise levels, dBA, noise models, community impact, Federal Highway Administration				15. NUMBER OF PAGES 28	
				16. PRICE CODE	
17. SECURITY CLASSIFICATION OF REPORT Unclassified		18. SECURITY CLASSIFICATION OF THIS PAGE Unclassified		19. SECURITY CLASSIFICATION OF ABSTRACT Unclassified	
				20. LIMITATION OF ABSTRACT Unlimited	

METRIC/ENGLISH CONVERSION FACTORS	
ENGLISH TO METRIC	METRIC TO ENGLISH
LENGTH (APPROXIMATE) 1 inch (in) = 2.5 centimeters (cm) 1 foot (ft) = 30 centimeters (cm) 1 yard (yd) = 0.9 meter (m) 1 mile (mi) = 1.6 kilometers (km)	LENGTH (APPROXIMATE) 1 millimeter (mm) = 0.04 inch (in) 1 centimeter (cm) = 0.4 inch (in) 1 meter (m) = 3.3 feet (ft) 1 meter (m) = 1.1 yards (yd) 1 kilometer (km) = 0.6 mile (mi)
AREA (APPROXIMATE) 1 square inch (sq in, in ²) = 6.5 square centimeters (cm ²) 1 square foot (sq ft, ft ²) = 0.09 square meter (m ²) 1 square yard (sq yd, yd ²) = 0.8 square meter (m ²) 1 square mile (sq mi, mi ²) = 2.6 square kilometers (km ²) 1 acre = 0.4 hectare (he) = 4,000 square meters (m ²)	AREA (APPROXIMATE) 1 square centimeter (cm ²) = 0.16 square inch (sq in, in ²) 1 square meter (m ²) = 1.2 square yards (sq yd, yd ²) 1 square kilometer (km ²) = 0.4 square mile (sq mi, mi ²) 10,000 square meters (m ²) = 1 hectare (ha) = 2.5 acres
MASS – WEIGHT (APPROXIMATE) 1 ounce (oz) = 28 grams (gm) 1 pound (lb) = 0.45 kilogram (kg) 1 short ton = 2,000 pounds (lb) = 0.9 tonne (t)	MASS – WEIGHT (APPROXIMATE) 1 gram (gm) = 0.036 ounce (oz) 1 kilogram (kg) = 2.2 pounds (lb) 1 tonne (t) = 1,000 kilograms (kg) = 1.1 short tons
VOLUME (APPROXIMATE) 1 teaspoon (tsp) = 5 milliliters (ml) 1 tablespoon (tbsp) = 15 milliliters (ml) 1 fluid ounce (fl oz) = 30 milliliters (ml) 1 cup © = 0.24 liter (l) 1 pint (pt) = 0.47 liter (l) 1 quart (qt) = 0.96 liter (l) 1 gallon (gal) = 3.8 liters (l) 1 cubic foot (cu ft, ft ³) = 0.03 cubic meter (m ³) 1 cubic yard (cu yd, yd ³) = 0.76 cubic meter (m ³)	VOLUME (APPROXIMATE) 1 milliliter (ml) = 0.03 fluid ounce (fl oz) 1 liter (l) = 2.1 pints (pt) 1 liter (l) = 1.06 quarts (qt) 1 liter (l) = 0.26 gallon (gal) 1 cubic meter (m ³) = 36 cubic feet (cu ft, ft ³) 1 cubic meter (m ³) = 1.3 cubic yards (cu yd, yd ³)
TEMPERATURE (EXACT) $[(x-32)(5/9)]\text{ }^{\circ}\text{F} = y\text{ }^{\circ}\text{C}$	TEMPERATURE (EXACT) $[(9/5)y + 32]\text{ }^{\circ}\text{C} = x\text{ }^{\circ}\text{F}$

QUICK INCH - CENTIMETER LENGTH CONVERSION



QUICK FAHRENHEIT - CELSIUS TEMPERATURE CONVERSION



For more exact and/or other conversion factors, see NIST Miscellaneous Publication 286, Units of Weights and Measures. Price \$2.50 SD Catalog No. C13 10286.

Updated 6/17/98

Table of Contents

Section	Page
Table of Contents	i
List of Figures	ii
List of Tables	iii
1 Introduction.....	1
2 Background.....	2
3 The RCNM.....	4
3.1 RCNM Main Page.....	4
3.1.1 File Menu	5
3.1.2 Edit Menu.....	5
3.1.3 View Menu.....	6
3.1.4 Options Menu.....	6
3.1.5 Help Menu	8
3.2 Input Data.....	8
3.2.1 Receptors.....	8
3.2.2 Equipment	9
3.2.3 Noise Metric and Noise Limit Criteria	10
4 Results.....	18
5 Calculations in the RCNM.....	20
5.1 Metric Calculation	20
5.2 Exceedance Calculation	20
5.3 Totals Calculation	21
6 References.....	22
Appendix A: Best Practices for Calculating Estimated Shielding for Use in the RCNM.....	A-1

List of Figures

Figure	Page
1. The RCNM main page	4
2. <File> Menu	5
3. <Edit> Menu	5
4. <View> Menu	6
5. <Options> menu	6
6. Equipment list modification dialogue box	7
7. Units modification pull-down menu	8
8. Equipment dialogue box, with pull-down menu shown	9
9. Noise Metric pull-down menu	10
10. Noise Limit Criteria pop-up dialogue box	11
11. The Noise Limit Criteria "Clear" command button	12
12. Noise Limit Criteria pull-down menu	13
13. Noise Limit Criteria "Value" dialogue box	13
14. Noise Limit Criteria "Maximum" dialogue box	14
15. Noise Limit Criteria "Baseline +" dialogue box	14
16. Noise Limit Criteria "Conditional" dialogue box	15
17. L10 Adjustment dialogue box	16
18. Noise Limits display window	16
19. The RCNM main-page Results display	18

List of Tables

<u>Table</u>	<u>Page</u>
1. CA/T equipment noise emissions and acoustical usage factors database.....	3
2. Default Noise Limit Criteria	11

1 Introduction

The Roadway Construction Noise Model (RCNM) is the Federal Highway Administration's (FHWA) national model for the prediction of construction noise. Due to the fact that construction is often conducted in close proximity to residences and businesses, construction noise must be controlled and monitored to avoid impacts on surrounding communities. In addition to community issues, excessive noise can threaten a construction project's progress. Each project needs to balance the community's need for peace and quiet with the contractor's need to progress the work.

The Central Artery/Tunnel (CA/T) project in Boston, Massachusetts, which began in the early 1990s, is the largest urban construction project ever conducted in the United States. Its noise control program developed the Construction Noise Control Specification 721.560, the most comprehensive noise specification ever developed in the United States [1]. As part of the CA/T project noise control program, a construction noise prediction spreadsheet was developed [2]. Because the CA/T prediction tool can benefit other state and local governments, the FHWA developed the RCNM, which is based on the noise prediction calculations and the equipment database used in the CA/T prediction spreadsheet. The RCNM provides a construction noise screening tool to easily predict construction noise levels and to determine compliance with noise limits for a variety of construction noise projects of varying complexity.

2 Background

The RCNM is a national model based on the noise calculations and extensive construction noise data compiled for the CA/T Project. The basis for the national model is a spreadsheet tool developed in support of the CA/T project [2]. The CA/T predictions originated from Environmental Protection Agency (EPA) noise level work [3] and an Empire State Electric Energy Research Corp. Guide [4] which utilizes an “acoustical usage factor” to estimate the fraction of time each piece of construction equipment is operating at full power (i.e., its loudest condition) during a construction operation. Table 1 presents a construction equipment noise database compiled through the CA/T project [2]. This database is used to predict construction noise within the RCNM. The noise levels listed represent the A-weighted maximum sound level (Lmax), measured at a distance of 50 feet from the construction equipment.

Table 1. CA/T equipment noise emissions and acoustical usage factors database.

CA/T Noise Emission Reference Levels and Usage Factors					
filename: EQUIPLST.xls					
revised: 7/26/05					
	Impact	Acoustical Use Factor	Spec 721.560 Lmax @ 50ft	Actual Measured Lmax @ 50ft	No. of Actual Data Samples
Equipment Description	Device ?	(%)	(dBA, slow)	(dBA, slow)	(Count)
				(samples averaged)	
All Other Equipment > 5 HP	No	50	85	-- N/A --	0
Auger Drill Rig	No	20	85	84	36
Backhoe	No	40	80	78	372
Bar Bender	No	20	80	-- N/A --	0
Blasting	Yes	-- N/A --	94	-- N/A --	0
Boring Jack Power Unit	No	50	80	83	1
Chain Saw	No	20	85	84	46
Clam Shovel (dropping)	Yes	20	93	87	4
Compactor (ground)	No	20	80	83	57
Compressor (air)	No	40	80	78	18
Concrete Batch Plant	No	15	83	-- N/A --	0
Concrete Mixer Truck	No	40	85	79	40
Concrete Pump Truck	No	20	82	81	30
Concrete Saw	No	20	90	90	55
Crane	No	16	85	81	405
Dozer	No	40	85	82	55
Drill Rig Truck	No	20	84	79	22
Drum Mixer	No	50	80	80	1
Dump Truck	No	40	84	76	31
Excavator	No	40	85	81	170
Flat Bed Truck	No	40	84	74	4
Front End Loader	No	40	80	79	96
Generator	No	50	82	81	19
Generator (<25KVA, VMS signs)	No	50	70	73	74
Gradall	No	40	85	83	70
Grader	No	40	85	-- N/A --	0
Grapple (on backhoe)	No	40	85	87	1
Horizontal Boring Hydr. Jack	No	25	80	82	6
Hydra Break Ram	Yes	10	90	-- N/A --	0
Impact Pile Driver	Yes	20	95	101	11
Jackhammer	Yes	20	85	89	133
Man Lift	No	20	85	75	23
Mounted Impact Hammer (hoe ram)	Yes	20	90	90	212
Pavement Scarafier	No	20	85	90	2
Paver	No	50	85	77	9
Pickup Truck	No	40	55	75	1
Pneumatic Tools	No	50	85	85	90
Pumps	No	50	77	81	17
Refrigerator Unit	No	100	82	73	3
Rivit Buster/chipping gun	Yes	20	85	79	19
Rock Drill	No	20	85	81	3
Roller	No	20	85	80	16
Sand Blasting (Single Nozzle)	No	20	85	96	9
Scraper	No	40	85	84	12
Shears (on backhoe)	No	40	85	96	5
Slurry Plant	No	100	78	78	1
Slurry Trenching Machine	No	50	82	80	75
Soil Mix Drill Rig	No	50	80	-- N/A --	0
Tractor	No	40	84	-- N/A --	0
Vacuum Excavator (Vac-truck)	No	40	85	85	149
Vacuum Street Sweeper	No	10	80	82	19
Ventilation Fan	No	100	85	79	13
Vibrating Hopper	No	50	85	87	1
Vibratory Concrete Mixer	No	20	80	80	1
Vibratory Pile Driver	No	20	95	101	44
Warning Horn	No	5	85	83	12
Welder / Torch	No	40	73	74	5

3 The RCNM

The RCNM is a computer program used to assess construction noise impacts. The computer on which it is installed should be equipped with the Microsoft Windows 98 or newer operating system (OS) and 192 MB or more of random access memory (RAM). The display should be set to 1024 x 768 pixels or greater, and the computer should carry the Adobe Acrobat 4.0 or newer software.

The RCNM allows the estimation of three key metrics of interest: Lmax, Leq, and L10 at receptor locations for a construction operation that can include up to 20 pieces of equipment. RCNM allows for user-defined construction equipment and user-defined noise limit criteria. The two main uses of the RCNM are to allow typical computer users to: 1. easily predict noise emissions from construction equipment, and 2. determine a construction work plan's compliance with noise criteria limits. A variety of construction work scenarios can be created quickly, allowing the user to determine the impact of changing construction equipment and adding/removing the effects of shielding due to noise mitigation devices such as barriers.

3.1 RCNM Main Page

The RCNM consists of one main display page with Input Data and Results sections, shown in Figure 1.

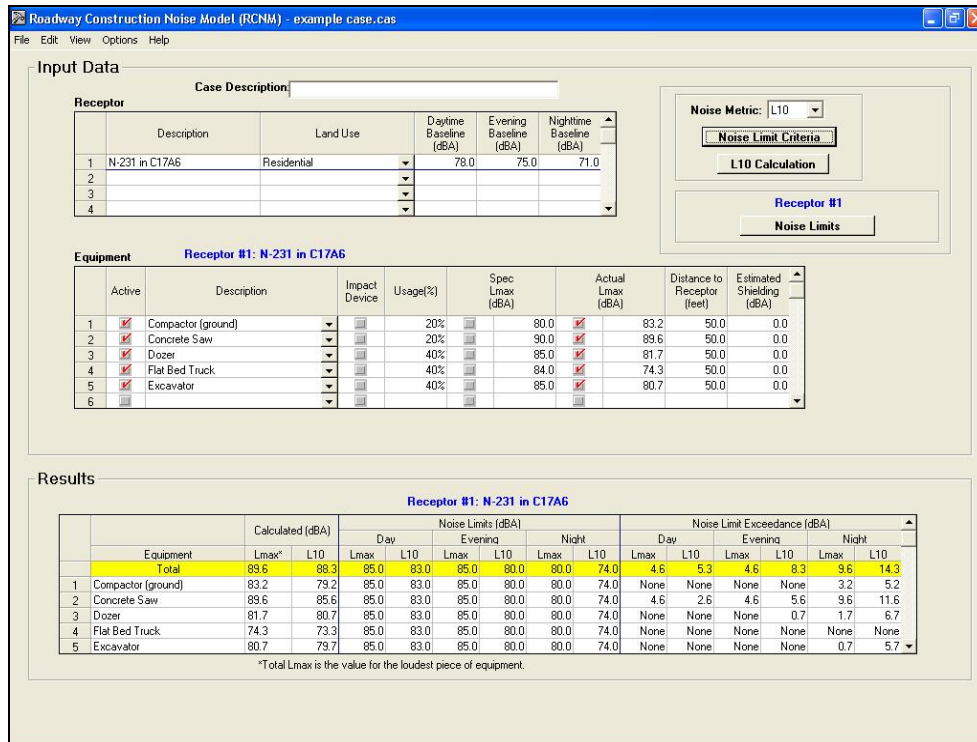


Figure 1. The RCNM main page

Several command buttons and pull-down menus allow the user to modify the input data before results are calculated by the model.

3.1.1 File Menu

The <File> menu, shown in Figure 2, contains items that allow the user to create, open, and save a case, export the results of a case, and exit the program.

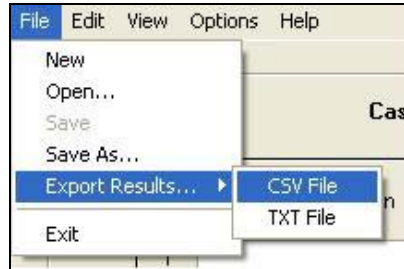


Figure 2. <File> Menu

- <New> creates a new case. If a case is currently open, the user is prompted to save it before closing.
- <Open...> allows the user to open an existing case file ([name].cas).
- <Save> saves the case with the current filename. If this is a new case, the user is asked for a new filename ([name].cas).
- <Save As...> The user is asked for a filename for a new case ([name].cas) and saves the case with that filename.
- <Export Results> prompts the user to save the case results for the current or all receptors to a comma separated value (CSV) file with the following naming convention: [name].csv. This type of file is easily read into a spreadsheet program. The user can also save the case results to a text file (TXT), which saves the results to a space-separated text format with the following naming convention: [name].txt.
- <Exit> closes the application. If changes have been made to the open case, the user is asked if he/she would like to save the case.

3.1.2 Edit Menu

The <Edit> menu, shown in Figure 3, allows the user to copy and paste data, delete data, and undo changes.

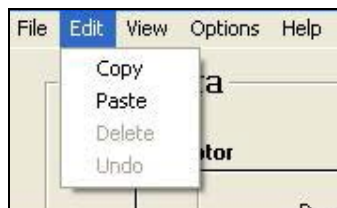


Figure 3. <Edit> Menu

- <Copy> lets the user copy into a clipboard the contents of a single cell or an entire line from an RCNM dialogue box.
- <Paste> lets the user copy the contents of the clipboard into a single cell or an entire line of an RCNM dialogue box.
- <Delete> lets the user delete from the case a receptor or piece of equipment selected in the receptor or equipment dialogue box.
- <Undo> lets the user revert the RCNM one step to where it was before the latest change was made.

3.1.3 View Menu

The <View> menu, shown in Figure 4, allows the user to focus in <Zoom +> on either the Input Data or Results section of the RCNM's main page. To activate Zoom +, click on Zoom + and guide the spyglass + icon to either Input Data or Results and single-click.

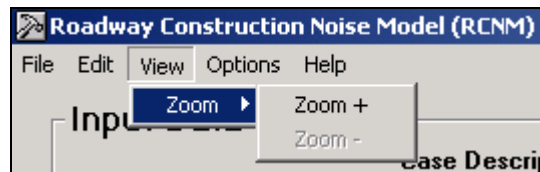


Figure 4. <View> Menu

To deactivate Zoom + and go back to the full RCNM screen, click on Zoom – and guide the spyglass – icon to the Input Data or Results section that has been maximized on the screen.

3.1.4 Options Menu

The <Options> menu, shown in Figure 5, allows the user to modify the equipment list and change the case's units of measure from feet to meters.

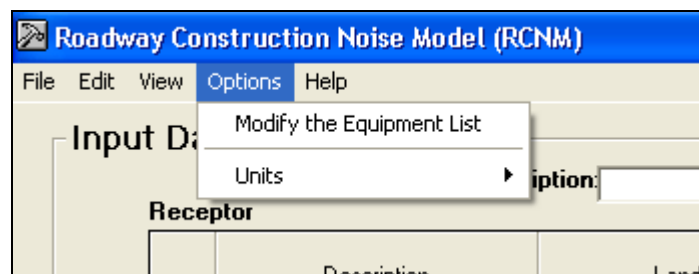


Figure 5. <Options> menu

The <Options> menu allows the user to add new types of equipment to the equipment list. The equipment list modification dialogue box, shown in Figure 6, allows the user to specify a user-defined piece of equipment and add it. The user can specify the following

data: whether the equipment is an impact device, the equipment's usage factor¹, and the equipment's Lmax level (spec and/or actual²). The user can also delete equipment that's been added by selecting it and clicking the delete button. The default equipment cannot be modified, but it may be deleted entirely from the case by selecting it and clicking the delete button. Selecting the default button restores the default equipment list (from the CA/T Project) and eliminates any user-defined equipment.

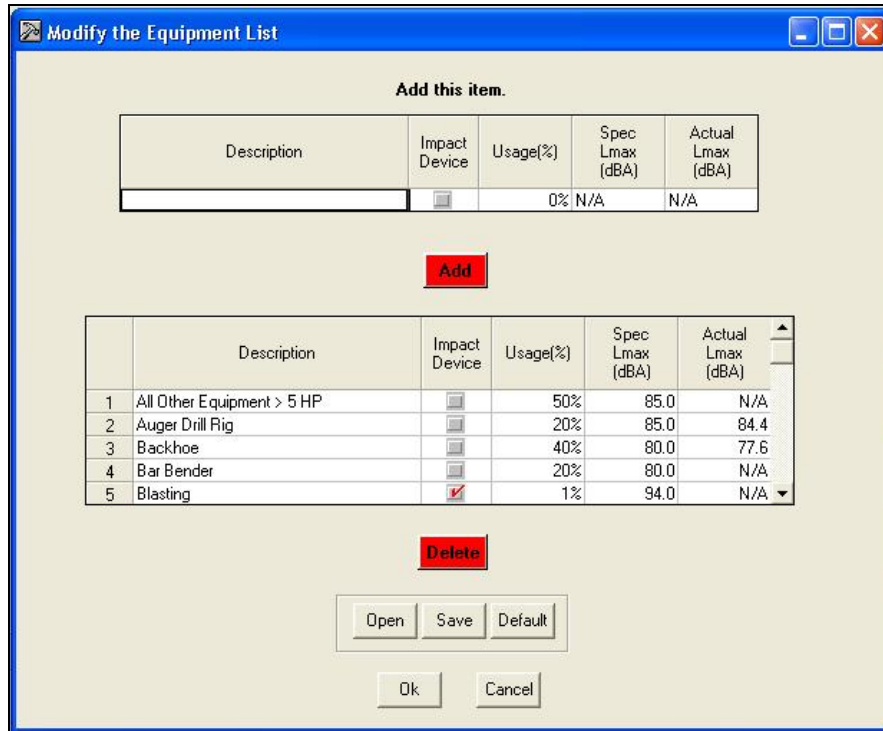


Figure 6. Equipment list modification dialogue box

Data for user-defined pieces of equipment may be saved to an equipment file ([name].equ), along with all other equipment in the current list, including default equipment. This file may be opened in other cases to incorporate these pieces of equipment.

The <Options> menu, as shown in Figure 7, also allows the user to change the case's units of measure from feet to meters or from meters to feet. The only input data affected by this tool are the Distance to Receptor values.

¹ Usage factor is the percentage of time during a construction noise operation that a piece of construction equipment is operating at full power. In the case of construction blasting, the equipment gives a very short duration blast, and can be quantified by using a 1% usage factor in the RCNM to allow for some prediction. Never use a usage factor of zero because the log of zero causes a mathematical impossibility. The usage factor term only affects the computation of Leq and L10. The usage factor does not enter into the equation when calculating the more important term for blasting, that being the Lmax.

² "Spec" refers to noise levels stated in noise specifications, and "Actual" refers to Lmax values measured at 50 ft from the equipment.

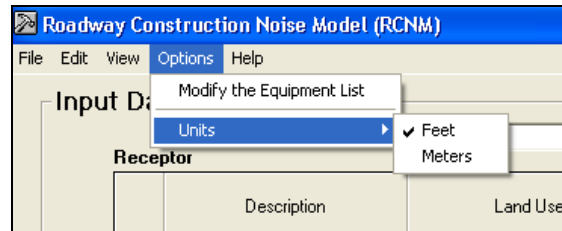


Figure 7. Units modification pull-down menu

3.1.5 Help Menu

The <Help> Menu loads for the user the RCNM User's Guide in Portable Document Format (PDF). This PDF is searchable by key word using the Adobe Acrobat Edit / Find search tool.

3.2 Input Data

The user is required to input receptor data and equipment data before a case can be processed. The user is advised to type in some summary comments about the case in the Case Description dialogue box before inputting data. Also, in order to determine noise limit exceedance values, the user can input noise limit criteria.

3.2.1 Receptors

Multiple receptors may be input for a case, but only one receptor may be processed at a time. The name of the highlighted receptor chosen for processing appears in blue type above the Equipment input dialogue box and the Noise Limits command button (see Figure 1). The user specifies the receptors for a study by entering information into the Receptors input box in the main window of the RCNM. The user is required to enter the receptor name, land use, daytime baseline L10 or Leq, evening baseline L10 or Leq, and nighttime baseline L10 or Leq. The baseline levels indicate the sound level at a receptor before any construction noise contributions. Baseline levels are only necessary if the desired noise criteria limits are based on *relative* increases in noise level. If the desired noise criteria limits are *absolute* noise levels, then the user should insert a placeholder number other than zero.

When entering information for more than one receptor, it may be desirable to copy information already entered. An entire receptor row may be highlighted and copied to another row, where copying multiple rows requires the selection of the same number of rows when pasting (this same functionality also applies to editable cells). Note: Entire rows may be selected by clicking on the row number.

Again, the RCNM will only calculate results for the receptor displayed in blue type in the Input Data portion of the main page. The results for other receptors may be displayed by selecting the desired receptor in the Receptor window; to select a receptor, click in any

cell in the row. Up to 100 receptors may be included in any case. Information for receptors is saved in the case file ([name].cas).

3.2.2 Equipment

Core equipment noise data are stored in the RCNM and are accessible by a pull-down menu in the main page, as in Figure 8.

Active	Description	Impact Device	Usage(%)	Spec Lmax (dBA)	Actual Lmax (dBA)	Distance to Receptor (feet)	Estimated Shielding (dBA)
<input checked="" type="checkbox"/>	Compactor (ground)	<input type="checkbox"/>	20%	80.0	83.2	50.0	0.0
<input checked="" type="checkbox"/>	Concrete Saw	<input type="checkbox"/>	20%	90.0	89.6	50.0	0.0
<input checked="" type="checkbox"/>	Dozer	<input type="checkbox"/>	40%	85.0	81.7	50.0	0.0
<input checked="" type="checkbox"/>	Flat Bed Truck	<input type="checkbox"/>	40%	84.0	74.3	50.0	0.0
<input checked="" type="checkbox"/>	Excavator	<input type="checkbox"/>	40%	85.0	80.7	50.0	0.0
<input type="checkbox"/>	Crane	<input type="checkbox"/>					
	Dozer	<input type="checkbox"/>					
	Drill Rig Truck	<input type="checkbox"/>					
	Drum Mixer	<input type="checkbox"/>					
	Dump Truck	<input type="checkbox"/>					
	Excavator	<input type="checkbox"/>					

Figure 8. Equipment dialogue box, with pull-down menu shown

As discussed in Section 3.1.4, new pieces of equipment may be added to a case and saved in an equipment file ([name].equ). When the user-defined equipment file is opened through the <Options> / <Modify the Equipment List> menu, user-defined equipment will appear in the equipment pull-down menu. The user activates and inactivates chosen equipment types by ticking and unticking the “Active” checkbox. The user is required to specify:

1. The type of reference emission levels to use (“Spec”, if applicable, or “Actual”, [the default is “Actual”]);
2. Distance to Receptor – that is, the distance between each type of equipment and the receptor being analyzed (the default distance is 50 feet); and
3. Estimated Shielding (in dBA) associated with each type of equipment (can leave the default value of 0.0 when not considering shielding). **NOTE: A Best Practices document is presented in Appendix A showing how to determine Estimated Shielding using several Rules of Thumb developed from experience at the CA/T project.**

When entering information for more than one piece of equipment, it may be desirable to copy information already entered. An entire equipment row may be highlighted and copied to another row, where copying multiple rows requires the selection of the same number of rows when pasting (this same functionality also applies to editable cells). Note: Entire rows may be selected by clicking on the row number.

The user may analyze up to 20 pieces of equipment at one time, and they may be included in any combination of different or identical equipment types.

3.2.3 Noise Metric and Noise Limit Criteria

While a case is open, the user can choose a noise metric (for baseline levels, noise limits, and calculated results) and enter the noise limit criteria for a local area. The user may edit the Lmax and L10 or Leq day, evening, and night noise limit criteria for a residential, commercial, or industrial area. Daytime, evening, and nighttime may represent any time periods the user wishes, but they are typically defined as 7 AM to 6 PM, 6 PM to 10 PM, and 10 PM to 7 AM, respectively. The criteria, used together with the baseline sound levels, define the noise limits for each receptor. CA/T Noise Limit Criteria are used as a default [1], but users may input their own criteria. The RCNM offers a metric pull-down menu and two or three command buttons to the right of the Receptor input dialogue box.

- Metric Pull-Down Menu

A pull-down menu allows the user to choose between the L10 or Leq metric, as in Figure 9. The chosen metric represents that used for the baseline levels, noise limits, and calculated results. For the noise limits and calculated results, Lmax values are also included.

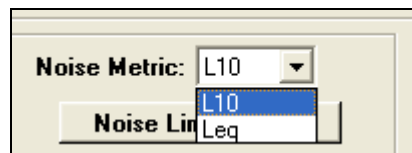


Figure 9. Noise Metric pull-down menu

- Noise Limit Criteria Pop-up Dialogue Box

A pop-up dialogue box allows the user to specify Noise Limit Criteria information for an area being studied in a case, as in Figure 10. The flexibility of the Noise Limit Criteria allows RCNM users to incorporate criteria based on local noise ordinances and baseline levels measured for each receptor.

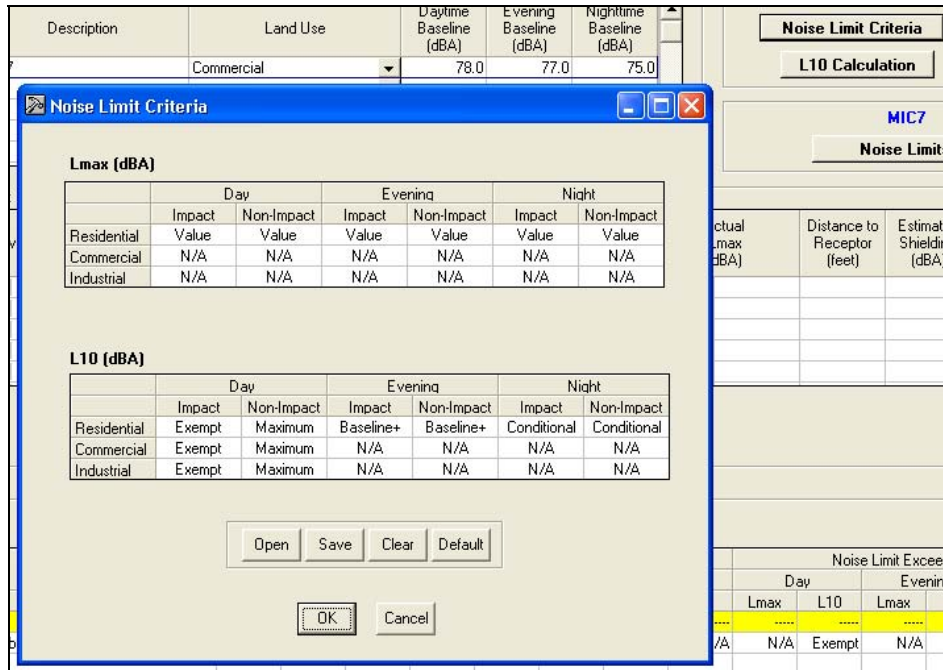


Figure 10. Noise Limit Criteria pop-up dialogue box

The user may populate this dialogue box with Noise Limit Criteria information derived from CA/T Construction Noise Control Spec. 721.560 [1] by clicking on the “Default” command button and clicking “Yes” when asked to load information from the default file, which is stored in the RCNM (see Table 2).

Table 2. Default Noise Limit Criteria

Land Use	Daytime (7 AM to 6 PM)		Evening (6 PM to 10 PM)		Nighttime (10 PM to 7 AM)	
	L10 Limit (dBA)	Lmax Limit (dBA)	L10 Limit (dBA)	Lmax Limit (dBA)	L10 Limit (dBA)	Lmax Limit (dBA)
Residential	maximum of 75 and baseline + 5 for non-impact* and exempt for impact**	85 for non-impact and 90 for impact	baseline + 5	85	if baseline <70 then baseline +5; if baseline ≥70 then baseline + 3	80
Commercial	maximum of 80 and baseline + 5 for non-impact and exempt for impact	N/A	N/A	N/A	N/A	N/A
Industrial	maximum of 85 and baseline+5 for non-impact and exempt for impact	N/A	N/A	N/A	N/A	N/A

* Non-impact equipment is equipment that generates a constant noise level while in operation.

** Impact Equipment is equipment that generates impulsive noise. Impulse Noise is defined as noise produced by the periodic impact of a mass on a surface, of short duration (generally less than one second), high intensity, abrupt onset and rapid decay, and often rapidly changing spectral composition.

Otherwise, the user may clear any information present in the dialogue box and specify new data in each cell. Clicking on the “Clear” command button will prompt the user to set all the cells in the dialogue box to Not Applicable (N/A), as in Figure 11. By clicking “Yes,” the user will populate all cells with N/A; by clicking “No,” the dialogue box will return to the data present before the user clicked “Clear.”

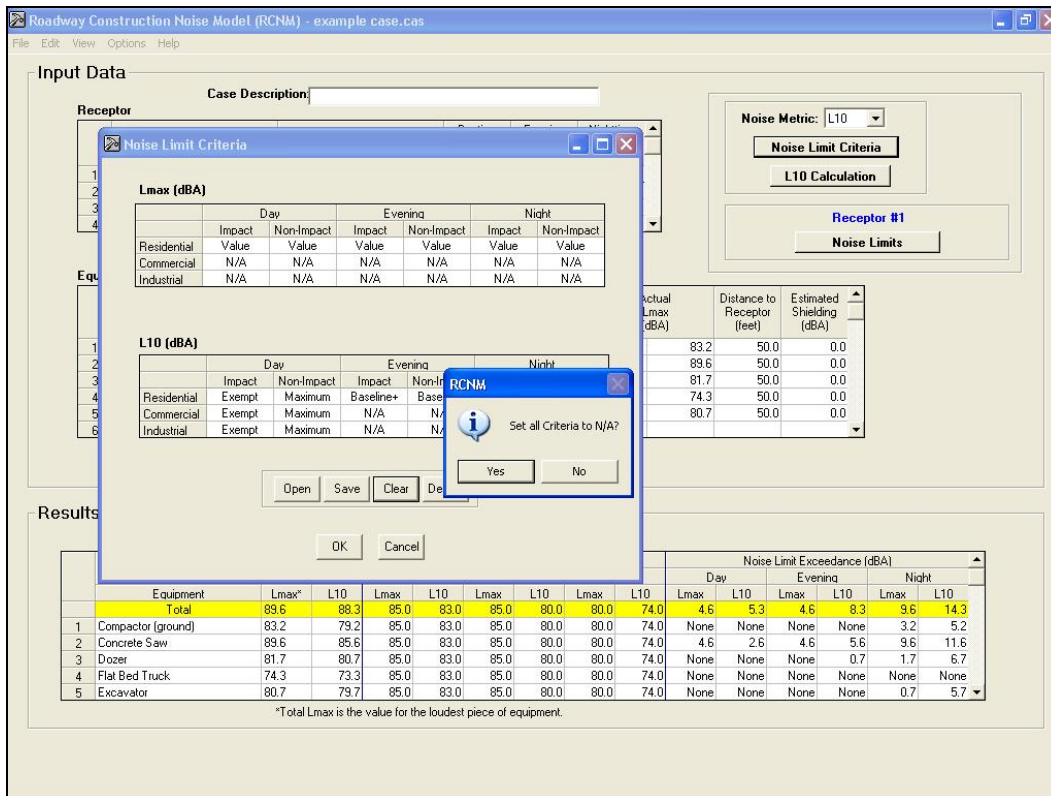


Figure 11. The Noise Limit Criteria “Clear” command button

Clicking on any cell in the Noise Limit Criteria dialogue box reveals a Noise Limit Criteria pull-down menu. Click on this pull-down menu to access the six options, as in Figure 12.

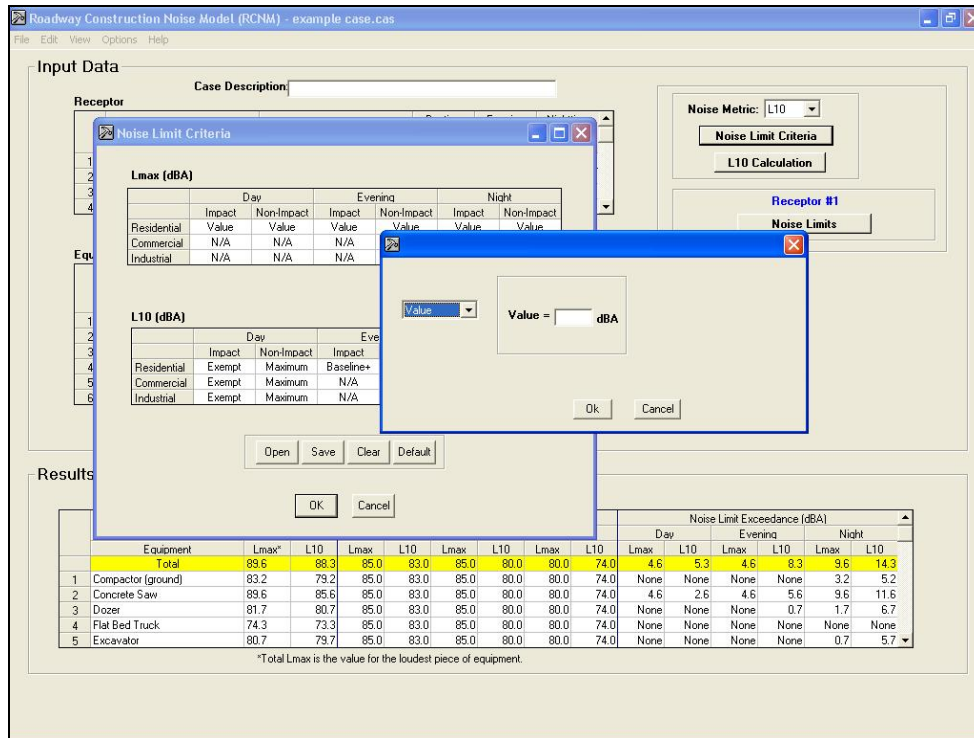


Figure 12. Noise Limit Criteria pull-down menu

Through these six options, the user specifies what Noise Limit Criteria changes, if any, are desirable in each cell. The six cell options are:

- i. Exempt (for the specified metric and land use, the equipment is exempt from noise limits)
- ii. N/A (for the specified metric and land use, the equipment does not have applicable noise limits)
- iii. Value (user is prompted to enter a value for which the noise level should not exceed), as in Figure 13:

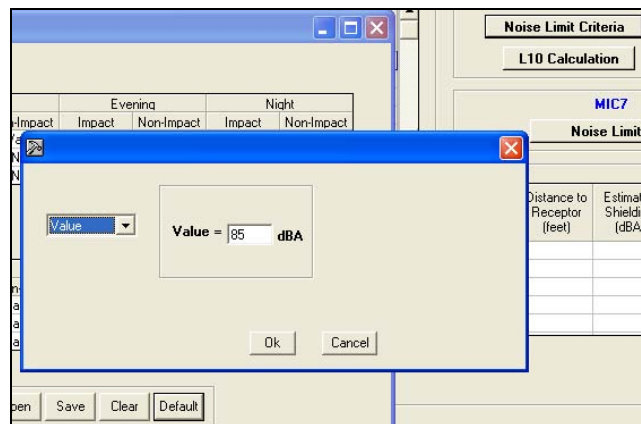


Figure 13. Noise Limit Criteria “Value” dialog box

- iv. Maximum (set value for which a noise level should not exceed to the maximum of two possible levels: A user-defined level or the Baseline level plus some user-defined increment), as in Figure 14:

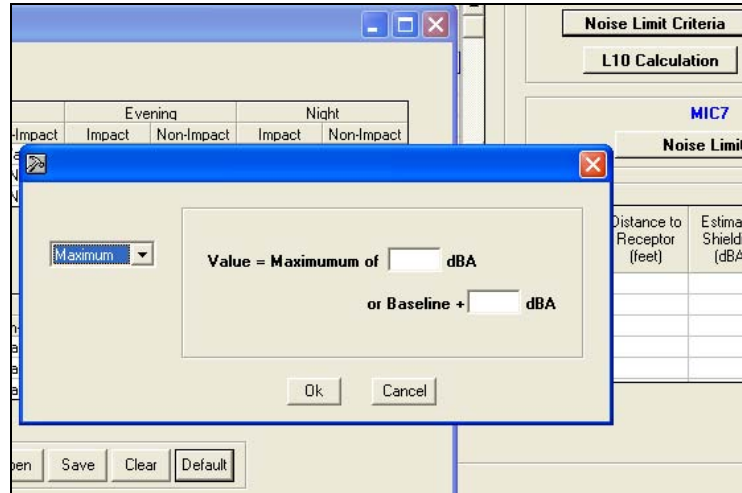


Figure 14. Noise Limit Criteria “Maximum” dialog box

- v. Baseline + (set value for which a noise level should not exceed to the Baseline level plus some user-defined increment), as in Figure 15:

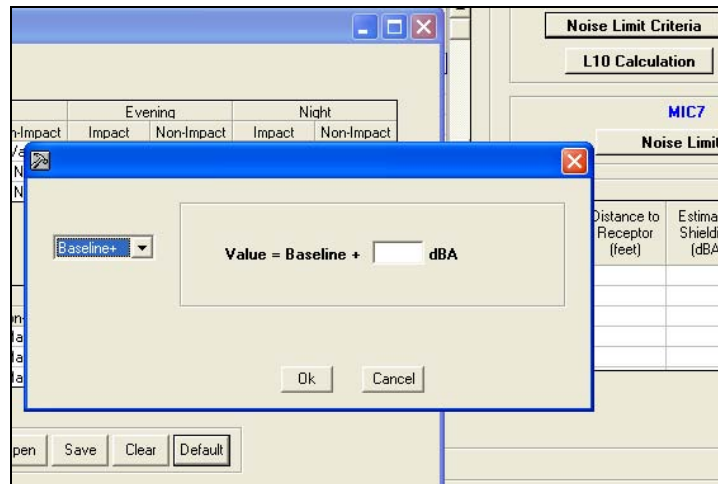


Figure 15. Noise Limit Criteria “Baseline +” dialog box

- vi. Conditional (set conditional value for which a noise level should not exceed; the user is prompted to enter the following information: 1. a comparison value, i.e., “If Baseline < [value], then ...”; 2. an increment value to add to the baseline level if the baseline level is *less than* the comparison value; 3. an increment value to add to the baseline level if the baseline level is *greater than or equal to* the comparison value), as in Figure 16:

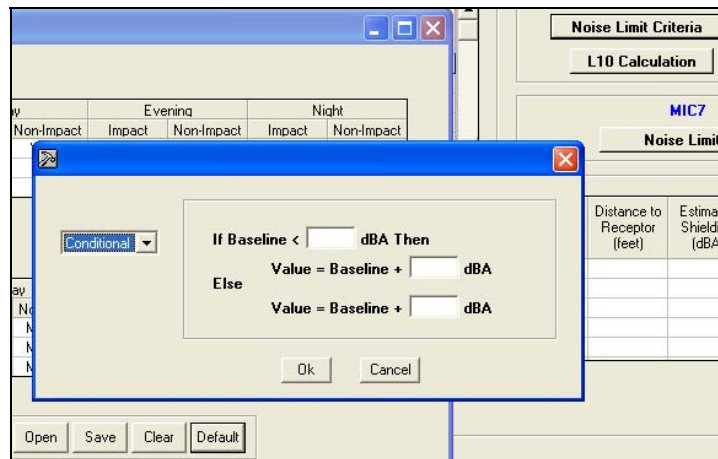


Figure 16. Noise Limit Criteria “Conditional” dialogue box

To see the current value of a cell, simply hold the mouse pointer over the cell. Once the user has specified values for all the cells in the Noise Limit Criteria dialogue box, these criteria can be saved in a criteria file ([name].cri) by clicking on the “Save” command button. The user will be prompted to give the criteria file a name. These criteria can thereafter be loaded into any case by clicking on the “Open” command button.

The user returns to the Noise Limit Criteria dialogue box by clicking “Ok”, and returns to the case by clicking “Ok” again.

- L10 Calculation (this button is present if the L10 metric is chosen)

By clicking on the “L10 Calculation” command button, the user can specify the adjustment factor used to calculate L10, as in Figure 17. By clicking the “Default” command button, the user automatically calls for an adjustment factor of 3 dBA, a value empirically derived from extensive CA/T Project data [2].

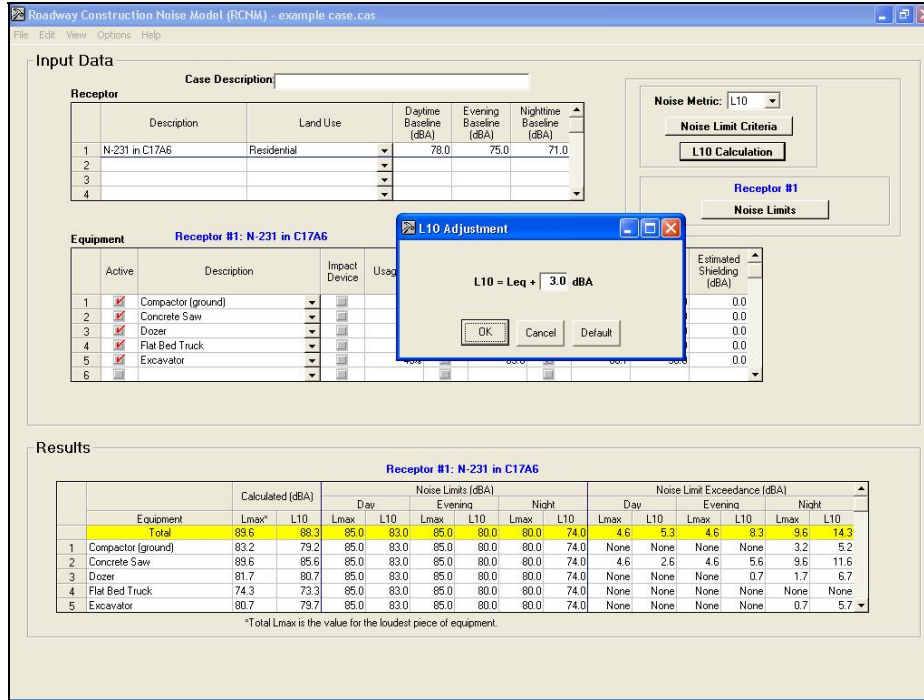


Figure 17. L10 Adjustment dialogue box

- Noise Limits

The “Noise Limits” command button opens a display window that looks exactly like the “Noise Limit Criteria” dialogue box, except that it is not editable, and the only button in the opened window is “Ok”. The values in the cells are based on the criteria set in the Noise Limit Criteria window and the baseline levels for the selected receiver, as in Figure 18. (If a receiver is not selected, the dialogue box is unavailable for viewing.)

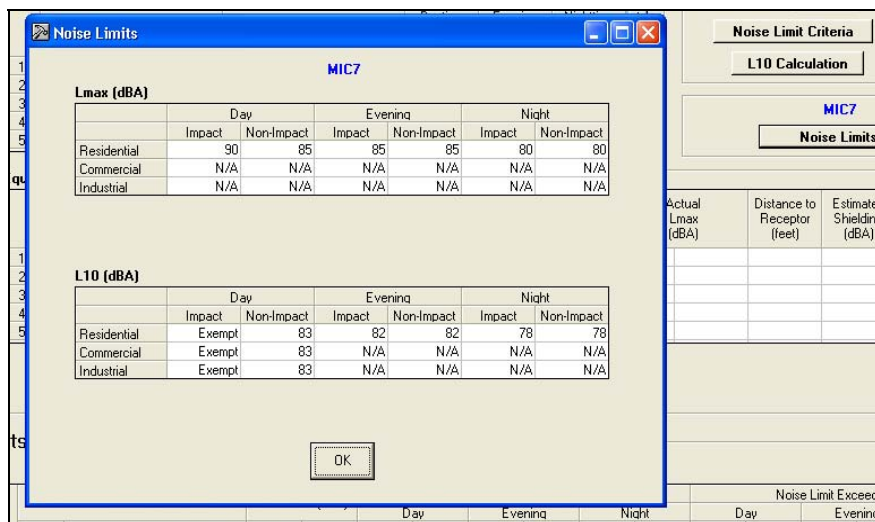


Figure 18. Noise Limits display window

Again, these limits may be changed by the user through the Noise Limit Criteria data entry window.

4 Results

Once the data for one receptor and up to 20 pieces of equipment have been specified in the Input Data portion of the main screen, the RCNM will automatically calculate the Results readout displayed in the bottom portion of the main screen, as in Figure 19. Any changes to the Input Data will automatically cause the RCNM to update the Results. The results for only one receptor will be displayed at a time; results for other receptors can be displayed by selecting the desired receptor in the Receptor window (click in any cell in the desired receptor row). Results for up to 100 receptors can be saved in a case. If Noise Limit Criteria information has been specified, the corresponding results (limits and exceedance values) will be updated as well.

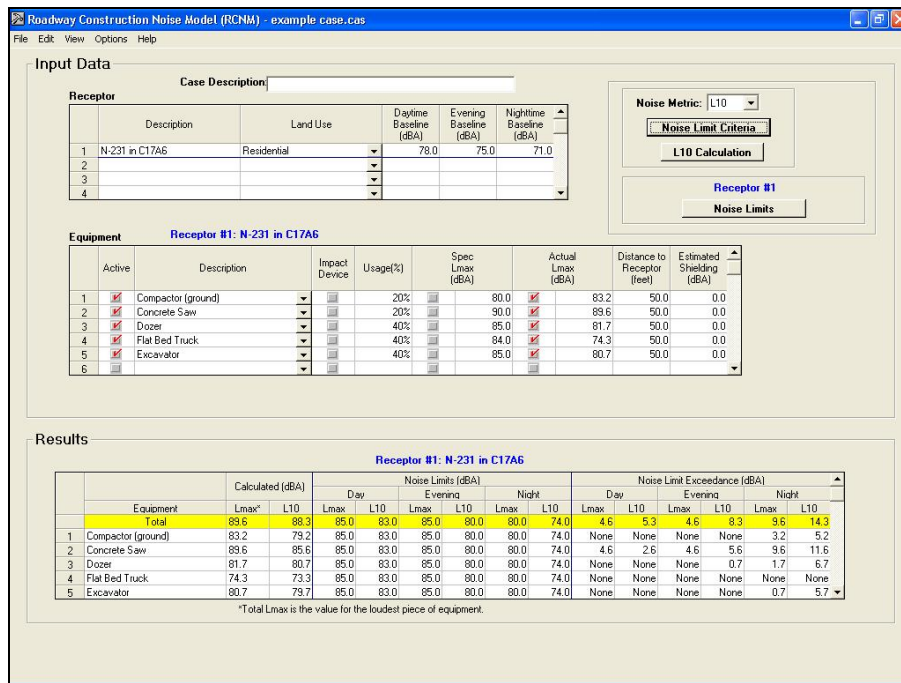


Figure 19. The RCNM main-page Results display

If there is insufficient input data for RCNM to compute a result, then a “Check Input Data” button will appear in the middle of the screen. Clicking on this button will provide the user with an indication of what additional input data are required.

The Results are presented in a read-only spreadsheet that contains the following fields, all applicable to the selected receptor:

- Equipment – the name/description of the equipment type
- Calculated Lmax – the calculated Lmax value for the equipment type. This is calculated from the “Spec” or “Actual” equipment Lmax, distance, and estimated shielding.

- Calculated Leq or L10 – the calculated Leq or L10 value (depending on what is selected in the Noise Metric pull-down menu) for the equipment type. This is calculated from the Calculated Lmax values, equipment usage factors, and selected adjustment factor.
- Day Lmax Noise Limit – the daytime Lmax noise limit for the equipment type.
- Day Leq or L10 Noise Limit – the daytime Leq or L10 noise limit for the equipment type.
- Evening Lmax Noise Limit – the evening Lmax noise limit for the equipment type.
- Evening Leq or L10 Noise Limit – the evening Leq or L10 noise limit for the equipment type.
- Night Lmax Noise Limit – the nighttime Lmax noise limit for the equipment type.
- Night Leq or L10 Noise Limit – the nighttime Leq or L10 noise limit for the equipment type.
- Day Lmax Noise Limit Exceedance – the daytime Lmax noise limit exceedance for the equipment type. If the criteria limit was not exceeded, the value is “None”.
- Day Leq or L10 Noise Limit Exceedance – the daytime Leq or L10 noise limit exceedance for the equipment type. If the criteria limit was not exceeded, the value is “None”.
- Evening Lmax Noise Limit Exceedance – the evening Lmax noise limit exceedance for the equipment type. If the criteria limit was not exceeded, the value is “None”.
- Evening Leq or L10 Noise Limit Exceedance – the evening Leq or L10 noise limit exceedance for the equipment type. If the criteria limit was not exceeded, the value is “None”.
- Night Lmax Noise Limit Exceedance – the nighttime Lmax noise limit exceedance for the equipment type. If the criteria limit was not exceeded, the value is “None”.
- Night Leq or L10 Noise Limit Exceedance – the nighttime Leq or L10 noise limit exceedance for the equipment type. If the criteria limit was not exceeded, the value is “None”.

The user may scroll down to view equipment results that are not visible, or the <View> / <Zoom +> menu may be used to zoom in on the Results display only (see Section 3.1.3). There is a row at the top of the Results display, highlighted in yellow, that calculates the total for all equipment combined. This row is always visible during scrolling of the Results spreadsheet. (Calculations for totals are explained in Section 5.3.)

Again, users may export a case's input information and results to a comma separated value (CSV) report file ([name].csv) by choosing the <Export Results> option from the <File> menu. The user can also save the case results to a text file (TXT), which saves the results to a space-separated text format ([name].txt). Results may be saved for a single receptor or all receptors in the case.

5 Calculations in the RCNM

The RCNM uses the primary equation described in the CA/T Construction Noise Control Specification 721.560 [1] for the construction noise calculations.

5.1 Metric Calculation

$$\mathbf{L_{maxCalc}} = \mathbf{selected_L_{max}} - \mathbf{20\log(D/50)} - \mathbf{shielding} \quad (1)$$

where

selected_Lmax is the “Spec” or “Actual” maximum A-weighted sound level at 50 ft., listed in Table 1 for all pieces of equipment, in dBA,
 D is the distance between the equipment and the receptor, in feet,
 shielding is the insertion loss of any barriers or mitigation, in dBA (see Appendix A).

$$\mathbf{Leq} = \mathbf{L_{maxCalc}} + \mathbf{10\log(U.F.\%/100)} \quad (2)$$

where

U.F.% is the time-averaging equipment usage factor, in percent (see footnote 1 on p 7).

$$\mathbf{L10} = \mathbf{Leq} + \mathbf{3\ dBA\ adjustment\ factor} \quad (3)$$

The RCNM calculates L10 by adding 3 dBA to the Leq, where the 3 dBA default L10 adjustment factor was empirically derived by comparing extensive CA/T construction noise data. This adjustment factor may be changed in the RCNM at the user's discretion.

5.2 Exceedance Calculation

$$\mathbf{Daytime\ L_{max}\ Exceedance} = \mathbf{L_{maxCalc}} - \mathbf{Daytime\ L_{max}\ Limit} \quad (4)$$

$$\mathbf{Daytime\ Leq\ or\ L10\ Exceedance} = \mathbf{Leq\ or\ L10} - \mathbf{Daytime\ Leq\ or\ L10\ Limit} \quad (5)$$

$$\mathbf{Evening\ L_{max}\ Exceedance} = \mathbf{L_{maxCalc}} - \mathbf{Evening\ L_{max}\ Limit} \quad (6)$$

$$\mathbf{Evening\ Leq\ or\ L10\ Exceedance} = \mathbf{Leq\ or\ L10} - \mathbf{Evening\ Leq\ or\ L10\ Limit} \quad (7)$$

$$\mathbf{Nighttime\ L_{max}\ Exceedance} = \mathbf{L_{maxCalc}} - \mathbf{Nighttime\ L_{max}\ Limit} \quad (8)$$

$$\mathbf{Nighttime\ Leq\ or\ L10\ Exceedance} = \mathbf{Leq\ or\ L10} - \mathbf{Nighttime\ Leq\ or\ L10\ Limit} \quad (9)$$

5.3 Totals Calculation

The Total values in the Results section are determined in the following manner:

- 1) Total Leq = $10 \cdot \log(\Sigma (\text{individual equipment Leq values}^3))$
- 2) Total L10 = $10 \cdot \log(\Sigma (\text{individual equipment L10 values}^3))$
- 3) Total Lmax = Maximum among individual equipment Lmax values
- 4) Total noise limits and limit exceedances:
 - a. Determine whether or not total is impact or non-impact
 - i. If all the equipment is non-impact, label the total as non-impact.
 - ii. If all the equipment is impact, label the total as impact.
 - iii. If the equipment is mixed non-impact and impact, label the total as non-impact.
 - b. Determine total noise limits and limit exceedances the same way as with individual pieces of equipment (see Section 5.2), only use the calculated total sound levels (Total Leq or Total L10) and the impact or non-impact label according to the criteria specified in i through iii.

³ The Leq and L10 levels are energy averages.

6 References

- [1] Construction Noise Control Specification 721.560, Central Artery/Tunnel Project, Massachusetts Turnpike Authority, Boston, MA, 2002.
- [2] Thalheimer, Erich. "Construction Noise Control Program and Mitigation Strategy at the Central Artery/Tunnel Project". Noise Control Engineering Journal, Vol. 48, No. 5, pp 157-165, September - October 2000.
- [3] "Information on Levels of Environmental Noise Requisite to Protect Public Health and Welfare with an Adequate Margin of Safety", Environmental Protection Agency, ONAC 550/9-74-004. Washington, DC, March 1974.
- [4] "Power Plant Construction Noise Guide". Bolt, Beranek, and Newman Inc. and Empire State Electric Energy Research Corp., Report No. 3321. New York, NY May 1977.

Appendix A: Best Practices for Calculating Estimated Shielding for Use in the RCNM

This Appendix presents some simplified shielding factors for use in the RCNM. These suggestions are "rules of thumb" based on experience gathered by CA/T construction noise experts working in the field [2].

- 1) If a noise barrier or other obstruction (like a dirt mound) just barely breaks the line-of-sight between the noise source and the receptor, use 3 dBA.
- 2) If the noise source is completely enclosed OR completely shielded with a solid barrier located close to the source, use 8 dBA. If the enclosure and/or barrier has some gaps in it, reduce the effectiveness to 5 dBA.
- 3) If the noise source is completely enclosed AND completely shielded with a solid barrier located close to the source, use 10 dBA.
- 4) If a building stands between the noise source and receptor and completely shields the noise source, use 15 dBA.
- 5) If a noise source is enclosed or shielded with heavy vinyl noise curtain material (e.g., SoundSeal BBC-13-2" or equivalent), use 5 dBA.
- 6) If dilapidated windows are replaced with new acoustical windows, or quality internal or exterior storm sashes, use an incremental improvement of 10 dBA for an overall Outside-to-Inside Noise Reduction (OINR) of 35 dBA.
- 7) If work is occurring deep inside a tunnel using the "top-down" construction method (i.e. cover the tunnel work with concrete roadway decks to allow surface traffic and then excavate underneath the roof deck), use 12 dBA.